

LH HealthCare Consulting

FÖRVALTNINGSRÄTTEN
I STOCKHOLM
Development / Production / Regulatory / Marketing / Sales

2012 -06- 15

Förata posten

Målnr:
Aktbll: Enhet:

1713

1(5)

Länstyrelsen i Stockholms Län
Box 22067
104 22 Stockholm

INKOM
LÄNSSTYRELSEN I STOCKHOLMS LÄN

2012 -06- 07

DNR: 281-18984-17

Stockholm 2012-06-01.

Överklagande av försäljningsstopp till Förvaltningsrätten för produkterna Fitnessguru Power Valencia Orange och Fitnessguru Heat. Dnr 281-12714-2012.

Vi överklagar härmed Länsstyrelsen i Stockholms Läns beslut 281-12714-2012 till Förvaltningsrätten på grund av att inget gränsvärde presenteras för koffein och synefrin samt att inget underlag för varken dess påstådda fara eller aktuell svensk lag, förordning eller föreskrift stödjer beslut om saluförbud. Det finns heller inte något stöd inom EU-rätt eller EU-praxis för saluförbud.

Notera: Europeiska läkemedelsverket EMA och Europeiska livsmedelverket EFSA har inget skrivet om synefrin och för koffein nämns inget om restriktioner, varpå Stockholms Miljöförvaltnings beslut i vårt fall ter sig ytterst arbiträrt och vetenskapligt ogrundat.

Att synefrin finns med på svenska VOLM-listan räcker inte i sig för beslut om saluförbud utan att gränsvärden presenteras vilket ej gjorts. VOLM-listan är en rekommendation om försiktighet och inget förbud.

Om beslutet att lägga säljförbud på Fitnessguru Heat och Fitnessguru Power Valencia Orange inte undanröjs finns en stor risk att dörrarna öppnas upp för att produkter som enbart innehåller lagliga substanser blir olagliga helt utan vetenskaplig grund eller saklig motivering. Detta går emot rättssatsen att lagen skall vara förutsägbar och lika för alla och är ett hot mot den svenska rättssäkerheten.

Det bör även nämnas i detta fall att produkter som innehåller samma aktiva ämnen i kombination (koffein och synefrin), även i avsevärt högre doser än de i Fitnessguru Heat och Fitnessguru Power Valencia Orange, i dag saluförs fritt efter tidigare beslut från Stockholms Stads Miljö- och Hälsoskyddsnämnd den 3 april 2012 - WNT Ripped Caps med koffein och synefrin i kombination.

Samma nämnd har således lagt saluförbud på Fitnessguru Heat och Fitnessguru Power Valencia Orange trots lägre dosering av samma ämnen. Detta i sig är gravt konkurrens hämmande och snedvrider konkurrensen på markanden för dessa produkter med signifikant inkomstbortfall för Fitnessguru Sweden AB, som inte ges möjlighet att konkurrera på samma villkor.

Fitnessguru Sweden AB yrkar av ovan nämnda anledningar därför på omedelbar inhibition av försäljningsstoppet samt att försäljningsförbudet upphävs med omedelbar verkan.

Postadress	Telefon	Telefax	Bankgiro	Organisationsnummer
LH HealthCare Consulting KB Ponnygatan 6 262 58 Ängelholm	0431-43 03 90 Mobiltelefon 0761-182665	0431-43 24 10 E-mail lennart@lhhc.se	5651-1587	969694-0825 Innehar F-skattebevis

Såsom ombud för Fitnessguru Sweden AB enligt bilagd fullmakt får jag anföra följande avseende överklagande av Länsstyrelsen i Stockholms beslut enligt Dnr. 281-12714-2012.

Fitnessguru Sweden AB yrkar

- att Förvaltningsrätten omgående undanröjer Länsstyrelsen i Stockholms Läns beslut enligt Dnr 281-12714-2012 avseende förbud mot utsläppande av kosttillskotten Fitnessguru Power Valencia Orange och Fitnessguru Heat på den svenska marknaden.

- att Förvaltningsrätten måtte förordna att det överklagade beslutet i sin helhet tillsvidare inte ska gälla (inhibition).

Notera korrekt benämning på produkterna: Fitnessguru Heat och Fitnessguru Power Valencia Orange.

Grunder.

1. Produkternas innehåll.

Produkten Fitnessguru Power Valencia Orange.

Fitnessguru Power Valencia Orange är ett kosttillskott med rekommendationen att ta 1-2 skopor dagligen.

En (1) respektive två (2) skopor innehåller följande:

Essentiella aminosyror	3750 mg	7500 mg
Arginin alfa-ketogluterat	3750 mg	7500 mg
Beta-alanin	1650 mg	3300 mg
Kreatin buffrat	2500 mg	5000 mg
Koffein	150 mg	300 mg
Peak ATP	62,5 mg	125 mg
Synefrin	15 mg	30 mg
Bioperin	2.5 mg	5 mg

Notera att mängden synefrin per dag vid högsta rekommenderade dos är endast 19% av tillåtna 160 mg enligt Läkemedelsverket och mängden koffein motsvarar vad som är i 3 koppar kaffe.

Produkten Fitnessguru HEAT.

Produkten Fitnessguru Heat är ett kosttillskott med rekommendationen att inta 2 kapslar dagligen.

2 kapslar innehåller följande:

Grönt te extrakt (60% EGCG)	300 mg
Koffein	290 mg
Garcinia extrakt	210 mg
Synefrin HCl	40 mg
Bioperin	5 mg

Notera att mängden synefrin per dag är endast 25% av tillåtna 160 mg och mängden koffein motsvarar knappt 3 koppar kaffe.

Postadress	Telefon	Telefax	Bankgiro	Organisationsnummer
LH HealthCare Consulting KB Ponnygatan 6 262 58 Ängelholm	0431-43 03 90 Mobiltelefon 0761-182665	0431-43 24 10 E-mail lennart@lhhc.se	5651-1587	969694-0825 Innehar F-skattebevis

2. Stockholms Miljöförvaltning (SMF) har inte haft behörighet att fatta det aktuella beslutet. Det är Fitnessgurus uppfattning att SMF inte har haft behörighet att fatta det aktuella beslutet om säljstopp för de ovan angivna produkterna enligt 11 § Livsmedelslagen och 23 § Livsmedelsförordningen. SMF:s beslut är således inte lagligt grundat och ska därför undanröjas.

Mot bakgrund att SMF inte har visat att de aktuella substanserna verkligen är osäkra strider SMH:s beslut mot myndighets utredningsskyldighet jämlikt §§ 4 och 7 FPL och därmed ska beslutet undanröjas.

Andra synpunkter är att SMF inte följt reglerna enligt 8 § i Förvaltningsprocesslagen (FPL) om utrednings- och bevisbördan. Det är den beslutande myndigheten som har bevisbördan för sina påståenden framgår också av EU-lagstiftningen i förordningen 178/2002.

Av artikel 14 punkt 4 framgår det att vid bedömning om ett livsmedel är skadligt för hälsan, skall detta "fastställas" av berörd myndighet. Detta betyder att det råder krav på "full bevisning" för den beslutande myndigheten enligt gällande EU-rätt.

Av artikel 54 i förordningen 882/2004 framgår det också att om den behöriga myndigheten konstaterar bristande efterlevnad skall den vidta åtgärder för att se till att företagaren avhjälper situationen. När myndigheten överväger att vidta åtgärder mot en livsmedelsföretagare, skall proportionalitetsprincipen beaktas.

2. Läkemedelsverkets syn på synefrin och koffein.

Läkemedelsverket har på sin hemsida redovisat avseende klassificering av produkter, att det är tillåtet med ett intag av synefrin upptill 160 mg/dag utan att en produkt blir klassad som läkemedel. <http://www.lakemedelsverket.se/overgripande/Lagar--regler/Vagledning/Vilken-lagstiftning-galler-for-min-produkt/Vanliga-fragor-och-svar-om-produkters-klassificering/>

Koffein är sedan något år tillbaka inte längre läkemedels klassat vid en maximal dags dos, utan bedömning görs beroende på produktens sammansättning och marknadsföring. Noteras kan att innehållet av koffein i en normal kopp kaffe är runt 100 mg.

Läkemedelsverket har noterat att det kan ske en förstärkning av synefrin effekten om ämnet kombineras med koffein. Dock finns inget angivet om mängder och vid en mängd under 160 mg/dag av synefrin finns inget skrivet från Läkemedelsverkets sida om försiktighet.

Europeiska läkemedelsverket EMA har inget redovisat om synefrin och för koffein nämns inget om restriktioner.

3. Livsmedelsverkets syn på synefrin och koffein.

Citrus aurantium finns med i VOLM-listan hos Livsmedelsverket med noteringen att det avser ett högt innehåll av synefrin, dock utan att redovisa vad högt är. Läkemedelsverket har fastställt att det är över 160 mg/dagsdos.

Livsmedelsverket har därefter på sin hemsida följt Läkemedelsverkets riktlinje att om synefrin halten är över 160 mg/dag, så ska produkten klassas som läkemedel daterat 2011-11-28.

Postadress	Telefon	Telefax	Bankgiro	Organisationsnummer
LH HealthCare Consulting KB Ponnygatan 6 262 58 Ängelholm	0431-43 03 90 Mobiltelefon 0761-182665	0431-43 24 10 E-mail lennart@lhhc.se	5651-1587	969694-0825 Innehar F-skattebevis

Noteras kan att det finns inget gränsvärde angivet internationellt för synefrin från någon myndighets sida.

Koffein finns det en mängd information om på Livsmedelsverkets hemsida. Noterbart är att det finns inget gränsvärde för koffein. Dock säger man att 20 mg/kg kroppsvikt kan ge lindriga förgiftningssymtom. Det innebär för en person på 60 kg ett intag av 1200 mg koffein, vilket motsvarar 12 koppar kaffe om dagen.

Health Canada har 2004 framfört risk med kombination av höga doser synefrin och koffein avseende påverkan på hjärt-kärl systemet. Ny dokumentation publicerad 2011 visar att det inte finns någon sådan risk.

At Green's request, Sidney J. Stohs, a researcher of performance-enhancing ingredients and co-author of a definitive scientific review on "The Safety of *Citrus aurantium* (Bitter Orange) and its Primary Protoalkaloid p-Synephrine" ([HYPERLINK](#)

"<http://www.naturalproductsinsider.com/news/2011/04/another-study-finds-bitter-orange-safe.aspx>" \o "blocked::<http://www.naturalproductsinsider.com/news/2011/04/another-study-finds-bitter-orange-safe.aspx>" *Phytotherapy Research*, April 2011) **provided Health Canada with up-to-date clinical studies and scientific literature available.**

OMAHA, Neb.—The use of bitter orange extract and p-synephrine appears to be "exceedingly safe," according to a new review of current information regarding the safety of *Citrus aurantium* (bitter orange) extract and p-synephrine based on human, animal and in vitro assessments as well as receptor binding and mechanistic studies [HYPERLINK](#)

"<http://www.nutracheminc.com/advz/UploadedFiles/Phyto%20Research%200411.pdf>" \o "blocked::<http://www.nutracheminc.com/advz/UploadedFiles/Phyto Research 0411.pdf>" (*Phytother Res.* 2011 Apr 8. DOI: 10.1002/ptr.3490).

The review found in 89 clinical research studies, no serious adverse effects were directly attributable to bitter orange extract and its principal protoalkaloidal constituent p-synephrine.

Researchers Sidney J. Stohs, Ph.D., and Harry G. Preuss, M.D. in conjunction with Mohd Shara, Pharm.D., Ph.D., concluded, the "preponderance of human clinical studies have reported that bitter orange extract (p-synephrine) either alone or in combination with caffeine and other ingredients has no effect on blood pressure or heart rate."

4. Miljöförvaltningens bedömning av andra produkter.

WNT Ripped Caps är en liknande produkt som Fitnessguru Power Valencia Orange och Fitnessguru Heat, dock innehållande högre mängder av synefrin och koffein. WNT Ripped Caps säljförbud har upphävts av Stockholms Stads Miljö- och Hälsoskyddsnämnd den 3 april 2012.

Vad är grunderna för bedömningen och ur konkurrenssynpunkt har inte redovisats.

Postadress	Telefon	Telefax	Bankgiro	Organisationsnummer
LH HealthCare Consulting KB Ponnygatan 6 262 58 Ängelholm	0431-43 03 90 Mobiltelefon 0761-182665	0431-43 24 10 E-mail lennart@lhhc.se	5651-1587	969694-0825 Innehar F-skattebevis

Yrkande på omedelbart upphävande av försäljningsförbudet.

Med bakgrund till fakta om synefrin och koffein, så är de mängder som ingår i produkterna Fitnessguru Power Valencia Orange och Fitnessguru Heat långt ifrån den storleksordning som kan förorsaka någon skada och det finns ingen risk med interaktion med de andra ingående ämnena.

Miljönämnden har inte presenterat några vetenskapliga underlag för att produkterna ska vara hälsofarliga. Företaget har å sin sida gjort bedömning av säkerheten enligt livsmedelsreglerna att de mängder för synefrin som ingår ligger klart under gränsen för läkemedelskontrollen på 160 mg/dag. Dokumentation publicerad i Phytotherapy Research 2001 med titeln REWIEW: The safety of Citrus aurantium (Bitter Orange) and its Primary Protoalkaloid p-Synephrine visar att synefrin är säkert och att inga allvarliga biverkningar finns redovisade. Studien bilägges.

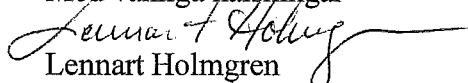
Fitnessguru Sweden AB har alltså väl värderat produkterna ur säkerhetssynpunkt baserat på denna översiktsartikel om säkerheten för synefrin och då funnit att det inte är några risker med dagliga mängder på 30-40 mg och i kombination med koffein motsvarande ett par koppar kaffe.

Baserat på synpunkter ovan om vad lagstiftningen säger om hur myndighetsutövandet ska handläggas, så har försäljningsförbudet kostat Fitnessguru ett försäljningsbortfall och därmed lidit en viss ekonomisk skada. Det är tyvärr inte så enkelt att beräkna en goodwill-skada.

Ingen myndighet i Sverige och inom EU har redovisat någon risk med de ingående ämnena och definitivt inte i de mängder som finns i produkternas rekommenderade dags intag.

Fitnessguru Sweden AB yrkar därmed att försäljningsförbudet omgående upphävs.

Med vänliga hälsningar


Lennart Holmgren

Bil. Fullmakt.

Phytotherapy Research 2011 DOI: 10.1002/ptr.3490.

Postadress	Telefon	Telefax	Bankgiro	Organisationsnummer
LH HealthCare Consulting KB Ponnygatan 6 262 58 Ängelholm	0431-43 03 90 Mobiltelefon 0761-182665	0431-43 24 10 E-mail lennart@lhhc.se	5651-1587	969694-0825 Innehar F-skattebevis

REVIEW

The Safety of *Citrus aurantium* (Bitter Orange) and its Primary Protoalkaloid *p*-Synephrine

Sidney J. Stohs,^{1*} Harry G. Preuss² and Mohd Shara³

¹School of Pharmacy and Health Professions, Creighton University Medical Center, Omaha, NE 68178, USA

²Department of Biochemistry, Medicine and Pathology, Georgetown University Medical Center, Washington, DC 22039, USA

³Faculty of Pharmacy, Jordan University of Science and Technology, Irbid, Jordan

Citrus aurantium (bitter orange) extract and its principal protoalkaloidal constituent *p*-synephrine are widely used in weight loss and weight management as well as in sports performance products. However, questions are raised frequently regarding the safety of these ingredients. The potential inherent dangers associated with the use of products containing *C. aurantium* extract are frequently touted, while conversely, millions of doses of dietary supplements have been consumed by possibly millions of individuals in recent years. Furthermore, millions of people consume on a daily basis various juices and food products from *Citrus* species that contain *p*-synephrine. This review summarizes current information regarding the safety of *C. aurantium* (bitter orange) extract and *p*-synephrine based on human, animal and *in vitro* assessments as well as receptor binding and mechanistic studies. The data indicate that based on current knowledge, the use of bitter orange extract and *p*-synephrine appears to be exceedingly safe with no serious adverse effects being directly attributable to these ingredients. Copyright © 2011 John Wiley & Sons, Ltd.

Keywords: *Citrus aurantium*; bitter orange; *p*-synephrine; clinical studies; animal studies; receptor binding.

INTRODUCTION

The extract of the immature fruit or peel of *Citrus aurantium* (bitter orange) and its principal protoalkaloidal constituent, *p*-synephrine, are used widely in weight management and weight loss as well as in sports performance products. Historically, bitter orange had been used in traditional Chinese medicine for a variety of clinical applications, including indigestion, diarrhea and dysentery, constipation and as an expectorant (Blumenthal, 2004; Stohs and Shara, 2007). Bitter orange has also been used in South American folk medicine to treat insomnia, anxiety and epilepsy (Stohs and Shara, 2007).

However, *C. aurantium* (bitter orange) has been listed by *Consumer Reports* (Anon, 2010) as being possibly unsafe and a dietary supplement 'to avoid'. The assumption is generally made that, because of structural similarities with sympathomimetic agents as ephedrine and nor-epinephrine, *p*-synephrine can be expected to exert central nervous system (CNS) stimulatory activity and hemodynamic effects as an increase in blood pressure and heart rate. As will be discussed below, these effects have not been supported by the vast majority of scientific data as well as widespread use, largely due to the structural differences which are reflected in the structure–activity relationships, marked differences in receptor binding, and the resultant physiological and pharmacological properties.

Various articles cite the potential cardiovascular hazards that may be associated with the use of products containing these ingredients (Bent *et al.*, 2004; Penzak *et al.*, 2001; Fugh-Berman and Myers, 2004; Haaz *et al.*, 2006, 2010; Rossato *et al.*, 2011; Inchiosa, 2011), with reference being made to clinical case reports that involve multi-herbal and poly-alkaloidal and poly-protoalkaloidal products (Stohs, 2010; McGuffin, 2006). Current confusion regarding the safety and efficacy of bitter orange extract and *p*-synephrine is clouded by multiple issues, including the use of complex mixtures of ingredients in products that include bitter orange extract, the release of misleading information by governmental agencies, and misunderstandings regarding the isomeric forms of synephrine and their differing pharmacological properties. In addition, the projected warnings regarding cardiovascular risks are extrapolated from studies involving *m*-synephrine and ephedrine which are not components of bitter orange extract, and from studies involving the intravenous administration of *p*-synephrine at concentrations that are not attained by oral ingestion in foods or supplements. The following information summarizes current research and knowledge regarding bitter orange extract and *p*-synephrine, its primary protoalkaloid.

CHEMISTRY

The primary pharmacologically active protoalkaloid in bitter orange peel and its extracts is *p*-synephrine (Pellati *et al.*, 2002, 2004, 2005; Avula *et al.*, 2005; Nutraceutical, Inc, 2005; Mattoli *et al.*, 2005; Nelson *et al.*,

Received 01 February 2011
Revised 04 March 2011
Accepted 08 March 2011

* Correspondence to: Dr Sidney J. Stohs, School of Pharmacy and Health Professions, Creighton University Medical Center, Omaha, NE 68178, USA. E-mail: sstohs@yahoo.com

2007; Tsujita and Takaku, 2007; Arbo *et al.*, 2008; Roman *et al.*, 2008; Mercolini *et al.*, 2010; Rossato *et al.*, 2010b; Percy *et al.*, 2010; Uckoo *et al.*, 2010) which comprises greater than 85% of the total protoalkaloids (Nelson *et al.*, 2007). Other minor protoalkaloidal constituents include octopamine, hordenine, tyramine and *N*-methyltyramine (Pellati *et al.*, 2002, 2004; Nelson *et al.*, 2007; Roman *et al.*, 2008; Mercolini *et al.*, 2010), and octopamine is present in trace amounts or absent in bitter orange extracts. *p*-Synephrine is a phenylethanolamine derivative with the hydroxy group in the *para* position on the benzene ring of the molecule (Fig. 1). *p*-Synephrine is the form found in bitter orange products (e.g. the patented bitter orange extract, Advantra Z[®] (Nutraceutical, Inc, 2005)). Much confusion exists in both the scientific and lay literature because there is also *m*-synephrine, which is also known as phenylephrine (hydroxyl group in the *meta*-position on the benzene ring; Fig. 2). *m*-Synephrine is a Food and Drug Administration (FDA)-approved over-the-counter (OTC) drug ingredient used in nasal decongestants and sprays.

m-Synephrine does not occur naturally in *C. aurantium* extract (Pellati *et al.*, 2002, 2004, 2005; Avula *et al.*, 2005; Mattoli *et al.*, 2005; Tsujita and Takaku, 2007; Nelson *et al.*, 2007; Arbo *et al.*, 2008; Roman *et al.*, 2008; Rossato *et al.*, 2010b; Mercolini *et al.*, 2010), contrary to some commentaries and discussions in various articles and reviews (Penzak *et al.*, 2001; Bent *et al.*, 2004; Smedema and Muller, 2008; Stephensen and Sarlay, 2009; Clauson *et al.*, 2008; Rossato *et al.*, 2010b; Haaz *et al.*, 2010), and does not occur in widely sold bitter orange extracts (Nutraceutical, Inc, 2005). No evidence has ever been presented that it occurs in natural products. Furthermore, *m*-synephrine is not a constituent of or has it been identified in standardized bitter orange reference materials prepared by the National Institute of Standards and Technology (Sander *et al.*, 2008; Evans *et al.*, 2008). Pellati and Benvenuti (2007) reviewed 19 chromatographic and electrophoretic analytical methods for phenylethanolamine protoalkaloids in *Citrus aurantium*, and in no case was *m*-synephrine detected. When *m*-synephrine has been reported in weight loss products (Allison *et al.*, 2005), it is believed to be due to the addition of this synthetic isomer (Rossato *et al.*, 2010b). However, to further complicate the issue, *m*-synephrine (phenylephrine) has been assessed as a potential ingredient in a weight loss product (Greenway *et al.*, 2006). In addition, although the origin is not known, trace amounts of *m*-synephrine have been reported in human plasma (Andrew *et al.*, 1993).

Chemically, *p*-synephrine is structurally related to ephedrine (Fig. 3). However, ephedrine is a phenylpropanolamine derivative and does not contain a *para*-substituted hydroxy group, whereas *p*-synephrine is a phenylethanolamine derivative. These two chemical differences greatly change the stereochemistry and alter the pharmacokinetic properties, including the ability of *p*-synephrine to cross the blood-brain barrier. The addition of the *para* hydroxy group on the *p*-synephrine molecule, as well as the lack of the additional methyl group on the side-chain, greatly decrease the lipid solubility of *p*-synephrine compared with ephedrine, resulting in little transport into the CNS compared with ephedrine (Colker *et al.*, 1999; Arch, 2002; Jones, 2004). As a consequence, *p*-synephrine exhibits little or no CNS and cardiovascular stimulation. However, *p*-synephrine may act locally on the cardiovascular system.

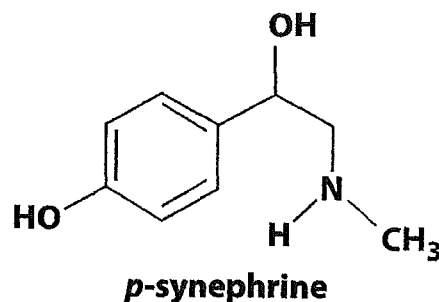


Figure 1. Structure of *p*-synephrine.

HUMAN CARDIOVASCULAR AND HEMODYNAMIC STUDIES

The preponderance of human clinical studies have reported that bitter orange extract (*p*-synephrine) either alone or in combination with caffeine and other ingredients has no effect on blood pressure (Penzak *et al.*, 2001; Haaz *et al.*, 2006; Colker *et al.*, 1999; Min *et al.*, 2005; Sale *et al.*, 2006; Gougeon *et al.*, 2005; Haller *et al.*, 2005, 2008; Zenk *et al.*, 2005; Hoffman *et al.*, 2006; Seifert *et al.*, 2011; Stohs *et al.*, 2011; Stohs and Shara, 2011) or heart rate (Penzak *et al.*, 2001; Colker *et al.*, 1999; Min *et al.*, 2005; Sale *et al.*, 2006; Gougeon *et al.*, 2005; Zenk *et al.*, 2005; Hoffman *et al.*, 2006; Seifert *et al.*, 2011; Stohs *et al.*, 2011, Stohs and Shara, 2011). Several studies involving products that contained *p*-synephrine in addition to other constituents including caffeine have reported increases in blood pressure (Bui *et al.*, 2006) and heart rate (Bui *et al.*, 2006; Haller *et al.*, 2005, 2008). One study has reported a significant decrease in systolic and diastolic blood pressure following ingestion of a product containing a *Citrus* extract (Oben *et al.*, 2008). Several of these studies will be discussed in more detail below.

Haller *et al.* (2005) examined the cardiovascular effects associated with a single dose of a multi-component dietary supplement (Xenadrine[®]) containing 5.5 mg *p*-synephrine, 239 mg caffeine, 5.7 mg octopamine and undisclosed amounts of other ingredients including catechin polyphenols. The hemodynamic effects of a single dose of a *C. aurantium* extract (Advantra Z[®]) that contained 46.9 mg *p*-synephrine were also examined. The multi-component dietary supplement but not the *p*-synephrine-containing *C. aurantium* extract increased both systolic and diastolic blood pressures at 2 h post treatment relative to the control group. No significant effects of either treatment on heart rate were noted over the first 3 h after ingestion of the products. However, a significant increase in heart rate over control was noted at only the 6 h time point by both treatments.

This study (Haller *et al.*, 2005) is complicated by the fact that all subjects consumed a meal 3 h after treatment ingestion. After eating, an increase in heart rate occurred in the two treatment groups as well as in the control group. The increase in heart rate does not coincide with the pharmacokinetics including blood levels and half-life of *p*-synephrine (Haller *et al.*, 2005, 2008) but does coincide with the thermic effect of food (Gougeon *et al.*, 2005). Given that the heart rates of the control group responded similarly to the two treatment groups after the meal at the 4 and 8 h measurements (1 and 5 h after the

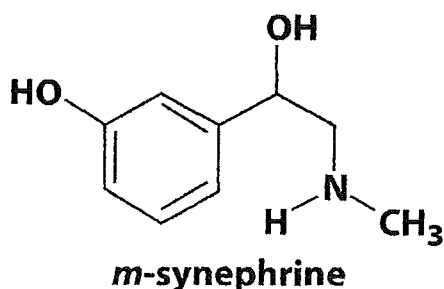


Figure 2. Structure of *m*-synephrine.

meal), the apparently significant difference seen at only the 6 h time point (3 h after the meal) does not appear to be attributable to product use.

Gougeon *et al.* (2005) assessed the thermic effects of food, and reported that the thermic effect of food increased by 29% in 17 females after they ingested 26 mg *p*-synephrine. The thermic effect of *p*-synephrine was greater in males than females in the absence of a meal, and no significant changes occurred in pulse rate or blood pressure when compared with baseline values.

Haller *et al.* (2008) have also examined the effects under resting and exercise conditions of a dietary supplement designed to enhance athletic performance. The product (Ripped Fuel Extreme Cut™) contained 21 mg *p*-synephrine, 304 mg caffeine, as well as extracts of green tea, ginger root, cocoa seed, willow bark and wasabi. The placebo or product was taken 1 h before 30 min of moderately intense exercise. There were no treatment-related differences in post-exercise heart rate, systolic blood pressure or body temperature. A significant product-related increase in diastolic blood pressure (8.7 mmHg) was reported, apparently counteracting the vasodilatory effects of exercise. Due to the poly-herbal and poly-alkaloidal nature of this product, the ingredient or ingredients responsible for the observed effect cannot be determined, although the authors implicated the bitter orange extract.

Bui *et al.* (2006) conducted a randomized, placebo-controlled, double blind crossover study on subjects given a single oral dose of 900 mg bitter orange extract (Nature's Way) that contained 6% *p*-synephrine (54 mg *p*-synephrine) or the placebo. Small but significant increases were observed in heart rate, and systolic and diastolic blood pressures for up to 5 h. Of interest is the fact that Min *et al.* (2005) used this same product in a similarly designed study randomized, placebo controlled cross-over study, and saw no effect on systolic or

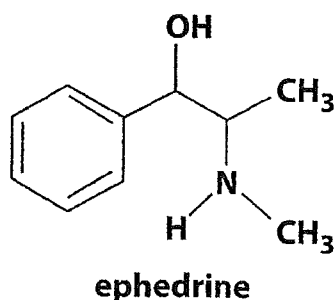


Figure 3. Structure of ephedrine.

diastolic blood pressure, or on the rate-corrected QT (QTc) interval.

Oben *et al.* (2008) conducted an 8 week, placebo-controlled double blind study in which participants were given a placebo or product twice daily consisting of a combination of *Citrus sinensis* peel and *Phellodendron amurense* bark. After 8 weeks, the participants receiving the product lost a significant amount of weight, with a small but significant decrease in systolic and diastolic blood pressures as well as decreases in fasting glucose levels, triglycerides and cholesterol. The amount of *p*-synephrine in the product was unfortunately not noted. *Phellodendron* is not known to exert cardiovascular effects.

Stohs *et al.* (2011) assessed the effects of 50 mg *p*-synephrine (Advantra Z®) alone or in combination with several bioflavonoids in human subjects on blood pressure, heart rate, resting metabolic rate, and a self-reported 10 item rating scale at baseline and after 75 min. The study was double blinded, randomized and placebo-controlled with 10 subjects per treatment group. None of the treatment groups exhibited changes in blood pressure or heart rate, although all treatment groups demonstrated increases in resting metabolic rates.

Stohs and Shara (2011) conducted a randomized, placebo-controlled, double blind crossover study involving 16 healthy subjects who consumed a capsule containing 50 mg *p*-synephrine (Advantra Z®) or the placebo daily for 14 days. ECGs, blood pressures and heart rates were determined over the course of the study. At this daily dosage of *p*-synephrine, no significant effects were observed on blood pressure or heart rate, and no cardiovascular abnormalities were observed.

The above results suggest the cardiovascular effects that have been observed with complex dietary supplements may be due to caffeine, ingredients other than *p*-synephrine or possibly a combination of ingredients in the products. Caffeine is well known to produce cardiovascular effects (Riksen *et al.*, 2011) particularly in caffeine-sensitive individuals (Yang *et al.*, 2010), and many dietary supplements that contain bitter orange extract contain high amounts of caffeine.

ANIMAL STUDIES

Relatively few studies have been conducted concerning the safety as well as efficacy of bitter orange extracts and *p*-synephrine in animals. One of the most widely cited studies is the work of Huang *et al.* (1995) who investigated the effects of a bitter orange extract and *p*-synephrine on portal hypertensive rats after infusion into the femoral vein. A dose-dependent decrease in portal venous pressure and heart rate with a dose-dependent increase in mean arterial pressure was observed.

In another study, Huang *et al.* (2001) investigated the hemodynamic effects of administering *p*-synephrine by gavage twice a day for 8 days to portal hypertensive rats. Portal hypertension was induced either by bile duct ligation or partial portal vein ligation. Similar results were obtained when 1 mg/kg or 10 mg/kg *p*-synephrine was given. *p*-Synephrine significantly ameliorated the hyperdynamic state in both hypertensive models, and the authors concluded that oral *p*-synephrine exhibited beneficial hemodynamic effects. However, it is not clear how relevant these portal hypertension models are to

the human oral consumption of dietary supplements containing *p*-synephrine at doses that are a fraction of those used in these animal studies.

Calapai *et al.* (1999) examined the effects of repeatedly administering orally 2.5–20 mg/kg of two *C. aurantium* fruit extracts that had been standardized to 4% and 6% *p*-synephrine. Animals were treated for 7 consecutive days and the various measurements were recorded for 15 consecutive days. Significant dose-dependent decreases in food intake as well as body weight were observed. No significant changes were observed in blood pressure, while ECG alterations were significant after 10 days of treatment. Unfortunately, the chemical composition of the bitter orange extract was not reported other than the *p*-synephrine content.

Parra *et al.* (2001) determined the LD₅₀ of various plant extracts including *C. aurantium* in mice. Their calculated LD₅₀ for a bitter orange extract was approximately 477 mg/kg in mice. The concentration of *p*-synephrine or other protoalkaloids was not reported. In another study, a single dose oral toxicity of a 6% *p*-synephrine-containing bitter orange extract (Advantra Z[®]) was evaluated in both male and female Sprague-Dawley rats (NutraTech, Inc, 1997). The animals received a single oral dose of 10000 mg/kg body weight of the extract. Gross necropsies were performed at the end of 14 days. No animals died and no gross pathological findings were observed. The acute oral LD₅₀ of the bitter orange extract was estimated to be greater than 10000 mg/kg in these rats. This equates to a LD₅₀ of greater than 600 mg *p*-synephrine/kg body weight in these animals. The reason for the vast differences in LD₅₀ may be related to the animal species or method of extraction. Other constituents other than *p*-synephrine may have been responsible for the toxicity in the mouse studies (Parra *et al.*, 2001).

Titta *et al.* (2010) have conducted an interesting study on the inhibition of fat accumulation in mice given juice from either a blood orange (which contains high levels of anthocyanins) or a blond orange. Dietary supplementation with juice from the blood orange but not the blond orange significantly reduced body weight gain and fat accumulation. The antiobesity effect of the blood orange juice could not be explained solely on the basis of the anthocyanin content, and the authors surmised that the anthocyanins may synergize with *p*-synephrine to produce the observed effect. Unfortunately, this hypothesis was not specifically tested.

Arbo *et al.* (2009) treated mice daily with bitter orange extract (7.5% *p*-synephrine) at doses of 400, 2,000 or 4000 mg/kg (corresponding to 30, 150 and 300 mg *p*-synephrine/kg) or 30 or 300 mg *p*-synephrine/kg. These doses are very high relative to doses of *p*-synephrine consumed by humans in dietary supplements. A reduction in body weight gain was observed at all doses relative to controls. No effects were observed on organ weights, biochemical parameters, blood pressure or heart rate in the treated mice. However, both doses of *p*-synephrine and the high dose of the bitter orange extract resulted in increases in hepatic reduced glutathione, while bitter orange extract decreased malondialdehyde content (an indicator of lipid peroxidation and lipid damage), and *p*-synephrine increased catalase activity by as much as 6-fold. High doses of both products produced modest decreases in glutathione peroxidase activity. The results suggest a beneficial effect with respect to weight loss

without adverse effects while also providing an antioxidant and tissue protective effect based on the increased glutathione levels and increased catalase activity with no increase in lipid peroxidation.

Several other studies using *Citrus* peel extracts have demonstrated antioxidant and chemoprotective effects. Tounsi *et al.* (2010) have shown an extract of *C. aurantium* exhibits higher antioxidant activity than several other *Citrus* species. Kang *et al.* (2011) demonstrated that a methanol extract of *C. aurantium* exhibited anti-inflammatory properties in a mouse macrophage cell line by modulating the expression of cyclooxygenase-2 (COX-2), inducible nitric oxide synthase (iNOS), and pro-inflammatory cytokines as tumor necrosis factor- α (TNF- α) and interleukin-6 (IL-6) via the NF- κ B pathway. Since inflammation and oxidative tissue damage are associated with obesity, these studies suggest another mechanism for potential beneficial effects of *p*-synephrine and bitter orange extract in weight management and strenuous physical activity.

In a study involving a model of myocardial ischemia in rats, Ou *et al.* (2009) observed that an extract of *Citrus* peel provided cardio-protection as demonstrated by a significant decrease in ST segment elongation and the extension of myocardial infarction. There were also significant decreases in serum lactate dehydrogenase, creatine kinase and malondialdehyde, as well as increases in the antioxidant enzymes superoxide dismutase and glutathione peroxidase. The authors postulated that protection was related to an antioxidant effect with inhibited lipid peroxidation.

Rossato *et al.* (2010a) examined the uptake of *p*-synephrine and *m*-synephrine by rat cardiomyocytes and the effect of these two isomers on intracellular glutathione content. Although both isomers were taken up by the cells, only the *m*-synephrine resulted in a depletion of both total and reduced glutathione. The effect was independent of α -1 adrenoreceptor stimulation. The authors incubated the cardiomyocytes with 1 mM concentrations of the two isomers, a concentration that is over 80000-fold higher than the 2 ng/mL observed at peak blood levels following oral ingestion of 46.9 mg *p*-synephrine (Haller *et al.*, 2005). Thus, the clinical relevance of the results is questionable. However, the study does demonstrate that the cardiomyocytes differentiate between the two isomers, and only the *meta*-isomer produced a potentially toxic effect.

In summary, in most animal studies, oral administration of bitter orange extract or *p*-synephrine results in weight loss or a decrease in weight gain without adverse cardiovascular or histopathological effects. Adverse effects have been reported when the extract is administered intravenously at high doses.

MECHANISM AND RECEPTOR BINDING

It is well known that, in general, binding to α -adrenergic receptors results in vasoconstriction, cardiovascular contractility and increased heart rate in response to β -1 adrenergic receptor binding, while bronchodilation occurs in response to β -2 adrenergic receptor binding (Inchiosa, 2011). As previously noted, it is widely assumed that *p*-synephrine will exhibit adrenoreceptor binding similar to that observed for nor-epinephrine,

ephedrine and *m*-synephrine due to some structural similarities (Penzak *et al.*, 2001; Bent *et al.*, 2004; Smedema and Muller, 2008; Clauson *et al.*, 2008; Stephensen and Sarlay, 2009). However, based on receptor binding studies discussed below, *p*-synephrine exhibits little binding affinity for β -1 and β -2 as well as α -adrenoreceptors. Several studies have shown that *p*-synephrine may act primarily as a β -3 adrenergic receptor agonist, resulting in increased thermogenesis and lipolysis (Tsujita and Takaku, 2007; Arch, 2002; Jones, 2004; Carpena *et al.*, 1999; Dulloo, 1993). Activation of β -3 adrenoreceptors has been shown to reduce food intake and weight gain in rats as well as enhance lipolysis in adipose tissue, while improving insulin resistance, glycemic control and lipid profiles (Alemzadeh *et al.*, 2008). β -3-Adrenoreceptors endogenously exist in adipose tissues and activation increases lipolysis and lipid metabolism (Oana *et al.*, 2005; Hamilton and Doods, 2008).

Based on receptor binding studies using human and animal cells, *m*-synephrine exerts its effects on α -, β -1 and β -2 adrenergic receptors (Jordan *et al.*, 1987; Ma *et al.*, 2010; Brown *et al.*, 1988; Hwa and Perez, 1996) resulting in increased blood pressure and heart rate effects. *m*-Synephrine is 100-fold and *p*-synephrine 40000-fold less potent than nor-epinephrine with respect to binding to β -1 and β -2 adrenoreceptors in guinea-pig atria and trachea (Jordan *et al.*, 1987). In addition, *p*-synephrine is approximately 50-fold less potent than *m*-synephrine in activating human α -1a adrenoreceptors, and does not act as an agonist with respect to human α -2a and α -2c adrenoreceptors (Ma *et al.*, 2010). Ma *et al.* (2010) also concluded that *p*-synephrine may act as an antagonist of pre-synaptic α -2a and α -2c adrenoreceptors present in nerve terminals.

Brown *et al.* (1988) compared the binding activities of the *meta* and *para* isomers of synephrine as well as octopamine to rat aorta and α -1 and α -2 adrenoreceptors. The binding of *m*-synephrine to α -1 and α -2 adrenoreceptors was 6-fold and 150-fold less, respectively, than nor-epinephrine. Furthermore, *p*-synephrine was 1000-fold less active than nor-epinephrine in binding to these two receptors. Based on these receptor binding studies, *p*-synephrine would be expected to exert little or no effect on blood pressure or heart rate relative to *m*-synephrine or nor-epinephrine.

Hwa and Perez (1996) examined the structural features necessary for binding and activation of the α -1a adrenoreceptor. They concluded that it is the *meta*-hydroxy of endogenous agonists that hydrogen bonds to a serine moiety at the receptor site, and not the *para*-hydroxy that allows receptor activation. Thus, *m*-synephrine (phenyl-ephrine) will bind to and activate the receptor resulting in vasoconstriction and an increase in blood pressure, while *p*-synephrine does not.

Hibino *et al.* (2009) assessed the ability of *p*-synephrine to constrict isolated rat aorta at concentrations of 1×10^{-7} to 3×10^{-5} mol/L. Using selected receptor antagonists, the authors concluded that the constrictor effects were exerted via α -1adrenoreceptors and serotonergic (5-HT_{1D} and 5-HT_{2A}) receptors. The concentrations of *p*-synephrine used to produce aortic constriction were as high as 2500 times the peak blood levels (2 ng/mL) observed when 46.9 mg *p*-synephrine was given to human subjects that did not produce an increase in either systolic or diastolic blood pressures (Haller *et al.*,

2005). These results suggest that *p*-synephrine may produce vasoconstriction but only at concentrations many times above the blood levels achieved under normal conditions of oral usage for weight management and sports enhancement.

Tsujita and Takaku (2007) have shown that a segment wall extract rich in *p*-synephrine from mandarin oranges induced lipolysis in rat fat cells in a concentration dependent manner. A juice sac extract from this same source failed to induce lipolysis. The non-selective β -antagonist propranolol completely inhibited lipolysis, whereas the α -antagonist phenoxybenzamine had no effect, providing additional mechanistic insight into the thermogenic and potential weight management effects of *p*-synephrine containing products. The authors suggest that a useful functional food that acts as a fat reduction material may be derived from the segment wall of mandarin oranges.

Of interest is the fact that β -3 adrenoreceptors have been identified in cardiovascular tissues (Rozec and Gauthier, 2006), and evidence suggests that their activation modulates sympathetic overstimulation through regulation of nitric oxide (Moens *et al.*, 2010). Thus, one can postulate that *p*-synephrine stimulation of β -3 adrenoreceptors in the cardiovascular system does not result in an increase in blood pressure or heart rate but may exhibit a cardio-protective effect. This cardiovascular receptor response may explain why an increase in heart rate or blood pressure is generally not seen when *p*-synephrine is used alone or when caffeine is combined with *p*-synephrine or bitter orange extract (see Human Cardiovascular and Hemodynamic Effects) in dietary supplements, in spite of the fact that caffeine alone is well known to produce an increase in these parameters.

These binding studies provide extensive evidence that the *meta* and *para* isomers of synephrine do not have similar receptor binding, and provide further mechanistic understanding for the vastly different physiological and pharmacological effects of the two isomers. The assumption that the two forms of synephrine have similar if not identical effects has led to mis-information, and the inappropriate attribution of potentially adverse effects produced by *m*-synephrine to *p*-synephrine, with only the latter occurring naturally in plant materials including in bitter orange.

SAFETY CONSIDERATIONS

A series of review articles regarding the safety and efficacy of bitter orange has been published (Preuss *et al.*, 2002; Penzak *et al.*, 2001; Bent *et al.*, 2004; Stohs and Shara, 2007, 2011; Haaz *et al.*, 2006, 2010). None of these reviews has reported any serious or significant adverse events that are directly attributable to bitter orange extract or *p*-synephrine. However, most of these reviews did not include a discussion of receptor binding or structure-activity relationships, and over the past 5 years a large number of additional studies involving bitter orange extract and *p*-synephrine have been published and are included in this review. As described above, the preponderance of the research literature does not support the development of adverse cardiovascular or neurological events in

humans or animals. Several recent reviews on bitter orange and synephrine have purported that the existence of *m*-synephrine in bitter orange is unclear and controversial, and that in essence all 'synephrine alkaloids' exert similar cardiovascular effects (Haaz *et al.*, 2010; Rossato *et al.*, 2011), contrary to the extensive literature cited above.

During the past several years, a number of case studies have been reported for products containing *C. aurantium* that involved adverse cardiovascular or other events where the authors suggested that the causative agent was synephrine or bitter orange extract (Stohs, 2010). The adverse events associated with the published clinical case studies included acute lateral-wall myocardial infarction (Nykamp *et al.*, 2004), exercise induced syncope associated with QT prolongation (Nasir *et al.*, 2004), ischemic stroke (Bouchard *et al.*, 2005), variant angina (Gange *et al.*, 2006), ischemic colitis (Sultan *et al.*, 2006), coronary spasm and thrombosis (Smedema and Muller, 2008), vasospasm and stroke (Holmes and Tavee, 2008), ST segment-elevation myocardial infarction (Thomas *et al.*, 2009), ventricular fibrillation (Stephensen and Sarlay, 2009) and exercise-induced rhabdomyolysis (Burke *et al.*, 2007). Another case report has suggested that the *C. aurantium* extract in a multi-component product may have masked bradycardia and hypotension in an anorexic individual (Gray and Woolf, 2005), although no evidence was reported that an adverse event had occurred. In each of the cases, the product in question contained multiple herbal constituents including bitter orange extract with a total of 5 to 12 alkaloidal and protoalkaloidal ingredients, and it is not possible or plausible to ascribe the effects specifically to one of these constituents.

A number of the cases involved body builders or serious athletes (Smedema and Muller, 2008; Stephensen and Sarlay, 2009; Thomas *et al.*, 2009; Burke *et al.*, 2007) and dehydration was involved in at least two of the cases (Smedema and Muller, 2008; Nasir *et al.*, 2004). Furthermore, in each case, various other reported and unreported factors may have been responsible for the observed effects, and detailed histories were lacking in some cases. For example, had the person involved been using steroids, anabolic agents or other ergogenic or thermogenic agents, or various prescription and non-prescription drugs? The product may not have been used as directed (Stephensen and Sarlay, 2009). Other confounding factors and pre-existing conditions existed such as a history of substance abuse (Thomas *et al.*, 2009), undetected heart disease (Nykamp *et al.*, 2004), sickle cell trait (Burke *et al.*, 2007), hypertriglyceridemia (Gange *et al.*, 2006), history of tobacco smoking (Stephensen and Sarlay, 2009; Nykamp *et al.*, 2004; Bouchard *et al.*, 2005) and the consumption of large quantities of caffeine daily (Nykamp *et al.*, 2004; Thomas *et al.*, 2009). In addition, there is a high probability that the events were concurrent but random and unrelated, based on the fact that cardiovascular events occur in millions of people annually.

The historical use of extracts of bitter orange in traditional Chinese medicine for hundreds of years as well as the fact that millions of doses of products containing bitter orange extract (containing *p*-synephrine) may have been consumed in the United States in recent years without the report of serious incidents aid in putting the safety issue into context. Two percent of

respondents in a survey reported taking a dietary supplement containing bitter orange (Klonz *et al.*, 2006), which if extrapolated nationwide would include at least several million individuals. As previously noted, no serious adverse events have been directly attributable to bitter orange or *p*-synephrine (Preuss *et al.*, 2002; Bent *et al.*, 2004; Fugh-Berman and Myers, 2004; Haaz *et al.*, 2006, 2010; Stohs and Shara, 2007, 2011).

A final consideration regarding the safety of *p*-synephrine is the exposure of millions of people who daily consume, without ill effect, various juices and food products as marmalade from *Citrus* species as Seville orange, grapefruit, mandarin and other orange-related species that contain *p*-synephrine (Pellati *et al.*, 2002, 2004, 2005; Blumenthal, 2004; Avula *et al.*, 2005; Mattoli *et al.*, 2005; Dragull *et al.*, 2008; Arbo *et al.*, 2008; Roman *et al.*, 2008). A typical sweet orange contains about 6 mg *p*-synephrine (Mattoli *et al.*, 2005). A wide variety of *Citrus* juices contain approximately 5 mg *p*-synephrine per 8 ounce glass (Blumenthal, 2004; Pellati *et al.*, 2002, 2004, 2005). A U.S. Department of Agriculture study of the *p*-synephrine content of mandarin orange juice from 10 different groves in California found that the *p*-synephrine content ranged from 73 to 158 mg/L, with an overall mean of 93 mg/L (Dragull *et al.*, 2008). Another study has shown the juice from Clementines, a variety of mandarin oranges, contained on average of 114 mg *p*-synephrine/L while Marrs sweet oranges yielded 85 mg/L (Uckoo *et al.*, 2010). Therefore, consuming an 8 ounce glass of mandarin orange juice may deliver as much as 40 mg *p*-synephrine, similar to the amount of *p*-synephrine in the typical dietary supplement.

No deaths have ever been directly attributed to bitter orange or *p*-synephrine, and the U.S. Poison Control Centers again reported no deaths due to vitamins/minerals and dietary supplements in 2009 (Bronstein *et al.*, 2010). The margin of safety for *p*-synephrine appears to greatly exceed that of aspirin and acetaminophen (Lee, 2004) as well as many prescription and OTC drugs.

A contributor to the concerns regarding the safety of bitter orange and *p*-synephrine has been the U.S. Federal government. In 2004, the FDA supplied information to a major newspaper indicating that 85 adverse reactions and seven deaths had been associated with bitter orange-containing dietary supplements. Subsequently, the purported number of adverse events increased to 169. A dissection of the FDA information by McGuffin (2006) obtained through the Freedom of Information Act and on which the reports were based, clearly indicated that no credible adverse events could be attributed to bitter orange. A recent review of 22 FDA adverse event reports and 10 published clinical case reports over the past 5 years has again concluded that no serious adverse events can be directly attributed to bitter orange extract or *p*-synephrine (Stohs, 2010). The FDA has noted some 'misstatements' about bitter orange in *The Tan Sheet* (Anon, 2006).

SUMMARY

In summary, based on current research as well as the extensive ingestion of bitter orange and *p*-synephrine in the form of supplements as well as fruits, juices and

other *Citrus* food products, the data indicate that bitter orange extract and *p*-synephrine are exceedingly safe. No credible adverse events have been directly attributed to bitter orange, or its primary protoalkaloid *p*-synephrine.

Conflict of Interest

SJS and HGP have served as consultants for Nutratech, Inc., a company that markets bitter orange extracts.

REFERENCES

- Alemzadeh R, Karlstad MD, Tushaus K, Buchholz M. 2008. Diazoxide enhances basal metabolic rate and fat oxidation in obese Zucker rats. *Metabolism* **57**: 1597–1607.
- Allison DB, Cutter G, Poehleman ET, Moore DR, Barnes S. 2005. Exactly which synephrine alkaloids does *Citrus aurantium* (bitter orange) contain? *Int J Obesity* **29**: 443–446.
- Andrew R, Best SA, Watson DG, Midgley JM, Reid JL, Squire IB. 1993. Analysis of biogenic amines in plasma of hypertensive patients and a control group. *Neurochem Res* **18**: 1179–1182.
- Anon. 2006. CFSAN examines AER reporting following bitter orange miscalculation. *Tan Sheet* **12**: 11–12.
- Anon. 2010. Dangerous supplements. What you don't know about these 12 ingredients could hurt you. *Consumer Reports* Sept: 16–20.
- Arbo MD, Larentis ER, Linck VM *et al.* 2008. Concentrations of *p*-synephrine in fruits and leaves of *Citrus* species (Rutaceae) and the acute toxicity testing of *Citrus aurantium* extract and *p*-synephrine. *Food Chem Toxicol* **46**: 2770–2775.
- Arbo MD, Schmal MB, Limberger RP. 2009. Subchronic toxicity of *Citrus aurantium* L. (Rutaceae) extract and *p*-synephrine in mice. *Reg Toxicol Pharmacol* **54**: 114–117.
- Arch JR. 2002. β -3-Adrenoreceptor agonists: potential, pitfalls and progress. *Eur J Pharmacol* **440**: 99–107.
- Avula B, Upparapalli SK, Navarrete A, Khan IA. 2005. Simultaneous quantification of adrenergic amines and flavonoids in *C. aurantium*, various *Citrus* species, and dietary supplements by liquid chromatography. *J Am Org Anal Chem Int* **88**: 1593–1606.
- Bent S, Padula A, Neuhaus J. 2004. Safety and efficacy of *Citrus aurantium* for weight loss. *Am J Cardiol* **94**: 1359–1361.
- Blumenthal M. 2004. Bitter orange peel and synephrine. Part 1. *Whole Foods* March: 77–79, 97.
- Bouchard NC, Howland MA, Greller HA, Hoffman RS, Nelson LS. 2005. Ischemic stroke associated with use of an ephedra-free dietary supplement containing synephrine. *Mayo Clin Proc* **80**: 541–545.
- Bronstein AC, Spyker DA, Cantilena LR, Green JL, Rumack BH, Griffin SL. 2010. 2009 Annual Report of the American Association of Poison Control Centers' National Poison Data System (NPDS): 27th Annual Report. *Clin Toxicol* **48**: 979–1178.
- Brown CM, McGrath JC, Midgley JM *et al.* 1988. Activities of octopamine and synephrine stereoisomers on alpha-adrenoreceptors. *Br J Pharmacol* **93**: 417–429.
- Bui LT, Nguyen DT, Ambrose PJ. 2006. Blood pressure and heart rate effects following a single dose of bitter orange. *Ann Pharmacodyn* **40**: 53–57.
- Burke J, Seda G, Allen D, Knee TS. 2007. A case of severe exercise-induced rhabdomyolysis associated with a weight-loss dietary supplement. *Mil Med* **172**: 656–658.
- Calapai G, Firenzuoli F, Saitta A *et al.* 1999. Antiobesity and cardiovascular toxic effects of *Citrus aurantium* extracts in the rat: a preliminary report. *Fitoterapia* **70**: 586–592.
- Carpene C, Galitzky J, Fontana E, Algie C, Lafontan M, Berlan M. 1999. Selective activation of beta 3-adrenoreceptors by octopamine: comparative studies in mammalian fat cells. *Naunyn Schmiedebergs Arch Pharmacol* **359**: 310–321.
- Clauson K, Shields KM, McQueen CE, Persad N. 2008. Safety issues associated with commercially available energy drinks. *J Am Pharm Assoc* **48**: e55–e65.
- Colker CM, Kalman DS, Torina GC, Perlis T, Street C. 1999. Effects of *Citrus aurantium* extract, caffeine and St John's wort on body fat loss, lipid levels and mood states in normal weight and obese individuals. *Curr Ther Res* **60**: 145–153.
- Dragull K, Breksa AP, Cain B. 2008. Synephrine content of juice from Satsuma mandarins (*Citrus unshiu* Marcovitch). *J Agric Food Chem* **56**: 8874–8878.
- Dulloo AG. 1993. Ephedrine, xanthines and prostaglandin inhibitors: actions and interactions in the stimulation of thermogenesis. *Int J Obesity* **17**: 1040–1049.
- Evans RL, Pho AN, Roman MC, Betz JM. 2008. Certification of standard reference materials containing bitter orange. *Anal Bioanal Chem* **391**: 2023–2034.
- Fugh-Berman A, Myers A. 2004. *Citrus aurantium*, an ingredient of dietary supplements marketed for weight loss: current status of clinical and basic research. *Exp Biol Med* **229**: 698–704.
- Gange CA, Madias C, Felix-Gretzik EM, Weintraub AR, Estes III NA. 2006. Variant angina associated with bitter orange in a dietary supplement. *Mayo Clinic Proc* **81**: 545–548.
- Gougeon R, Harrigan K, Tremblay JF, Hedrei P, Lamarche M, Morais JA. 2005. Increase in the thermic effect of food in women by adrenergic amines extracted from *Citrus aurantium*. *Obesity Res* **13**: 1187–1194.
- Gray S, Woolf AD. 2005. *Citrus aurantium* used for weight loss by an adolescent with anorexia nervosa. *J Adolescent Health* **37**: 415–416.
- Greenway F, de Jonge-Levitan L, Martin C, Grundy I, Parker C. 2006. Dietary herbal supplements with phenylephrine for weight loss. *J Med Food* **9**: 572–578.
- Haaz S, Fontaine KR, Cutter G, Limdi N, Perumean-Chaney S, Allison DB. 2006. *Citrus aurantium* and synephrine alkaloids in the treatment of overweight and obesity: an update. *Obesity Res* **7**: 79–88.
- Haaz S, Williams KY, Fontaine KR, Allison DR. 2010. Bitter Orange. In *Encyclopedia of Dietary Supplements*, 2nd edn, Coates PM, Blackman MR, Cragg GM, Levine M, Moss J, White JD (eds). Marcel Dekker: New York, 52–59.
- Haller CA, Benowitz NL, Peyton J III. 2005. Hemodynamic effects of ephedra-free weight loss supplements in humans. *Am J Med* **118**: 998–1003.
- Haller CA, Duan M, Peyton J III, Benowitz N. 2008. Human pharmacology of a performance-enhancing dietary supplement under resting and exercise conditions. *Br J Clin Pharmacol* **65**: 833–840.
- Hamilton F, Doods HN. 2008. Identification of potent agonists acting at an endogenous atypical β 3-adrenoreceptor state that modulate lipolysis in rodent fat cells. *Eur J Pharmacol* **580**: 55–62.
- Hibino T, Yuzurihara M, Kase Y, Takeda A. 2009. Synephrine, a component of *Evodiae fructus*, constricts isolated aorta via adrenergic and serotonergic receptors. *J Pharmacol Sci* **111**: 73–81.
- Hoffman JR, Kang J, Ratamess A, Jennings PF, Mangione G, Faigenbaum AD. 2006. Thermogenic effect from nutritionally enriched coffee consumption. *J Int Soc Sports Nutr* **3**: 35–43.
- Holmes Jr RO, Tavee J. 2008. Vasospasm and stroke attributable to ephedra-free xendrine: case study. *Mil Med* **173**: 708–710.
- Huang YT, Lin HC, Chang YY, Lee SD, Hong CY. 2001. Hemodynamic effects of synephrine treatment in portal hypertensive rats. *Jpn J Pharmacol* **85**: 183–188.
- Huang YT, Wang GF, Chen CF, Chen CC, Hong CY, Yang MCM. 1995. Fructus aurantii reduced portal pressure in portal hypertensive rats. *Life Sci* **57**: 2011–2020.
- Hwa J, Perez DM. 1996. The unique nature of the serine interactions for alpha 1-adrenergic receptor agonist binding and activation. *J Biol Chem* **271**: 6322–6327.
- Inchiosa Jr MA. 2011. Evidence (mostly negative) with the use of sympathomimetic agents for weight loss. *J Obesity* doi:10.1155/2011/764584.
- Jones D. 2004. Citrus and ephedra. *Whole Foods* April: 40–41.
- Jordan R, Thonoor CM, Williams CM. 1987. Beta-adrenergic activities of octopamine and synephrine stereoisomers on guinea-pig atria and trachea. *J Pharm Pharmacol* **39**: 752–754.
- Kang SR, Han DY, Park KI *et al.* 2011. Suppressive effect on lipopolysaccharide-induced proinflammatory mediators by *Citrus aurantium* in macrophage RAW 264.7 cells via NF- κ B signal pathway. *Evidence Based Complement Altern Med* doi: 10.1155/2011/248592.
- Klonz KC, Timbo BB, Street D. 2006. Consumption of dietary supplements containing *Citrus aurantium* (bitter orange) – 2004 California behavioral risk factor surveillance survey (BRFSS). *Ann Pharmacother* **40**: 1747–1751.

- Lee WM. 2004. Acetaminophen and the U.S. Acute Liver Failure Study Group: lowering the risks of hepatic failure. *Hepatology* **40**: 6–9.
- Ma G, Bavadekar SA, Schaneberg BT, Khan IA, Feller DR. 2010. Effect of synephrine and beta-phenylephrine on human alpha-adrenoceptor subtypes. *Planta Med* **76**: 981–986.
- Mattoli L, Cangi F, Maidecchi A, Ghiara C, Stubarò M, Tralda P. 2005. A rapid liquid electrospray ionization mass spectrometry method for evaluation *Citrus aurantium* L samples. *J Agric Food Chem* **53**: 9860–9866.
- McGuffin M. 2006. Media spins numbers on bitter orange AERs based on erroneous information from FDA. *HerbalGram* **69**: 52–55.
- Mercolini L, Mandrioli R, Trere T, Bugamelli F, Ferranti A, Raggi MA. 2010. Fast CE analysis of adrenergic amines in different parts of *Citrus aurantium* fruit and dietary supplements. *J Sep Sci* **32**: 1–8.
- Min B, Cios D, Kluger J, White CM. 2005. Absence of QTc-interval-prolonging or hemodynamic effects of a single dose of bitter orange extract in healthy subjects. *Pharmacotherapy* **25**: 1719–1724.
- Moens AL, Yang R, Watts VL, Barouch LA. 2010. Beta 3-adrenoreceptor regulation of nitric oxide in the cardiovascular system. *J Mol Cell Cardiol* **48**: 1088–1095.
- Nasir JM, Durning SJ, Ferguson M, Barold HJS, Haigney MC. 2004. Exercise-induced syncope associated with QT prolongation and ephedra-free xenadrine. *Mayo Clinic Proc* **79**: 1059–1062.
- Nelson BC, Putzbach K, Sharpless KE, Sander LC. 2007. Mass spectrometric determination of the predominant adrenergic protoalkaloids in bitter orange (*Citrus aurantium*). *J Agric Food Chem* **55**: 9769–9775.
- Nutraceutical, Inc. 1997. An acute oral toxicity study in rats with Advantra Z™. <http://www.nutraceuticalinc.com/advz/Uploaded-Files/Safety%20Study-Oral%20Toxicity-LD50%20of%20AdvZ%20in%20Rats.pdf>
- Nutraceutical, Inc. 2005. Independent analysis of *p*-synephrine in Advantra Z™ <http://www.nutraceuticalinc.com/advz/Uploaded-Files/Advantra%20Z%20Found%20to%20Contain%20Only%20P-Synephrine%20Isomer.pdf>
- Nykamp DL, Fackih MN, Compton AL. 2004. Possible association of acute lateral-wall myocardial infarction and bitter orange supplement. *Ann Pharmacother* **38**: 812–816.
- Oana F, Homma T, Takeda H et al. 2005. DNA microarray analysis of white adipose tissue from obese (fa/fa) Zucker rats treated with a β 3-adrenoreceptor agonist, KTO-7924. *Pharmacol Res* **52**: 395–400.
- Oben J, Enonchong E, Kothari S, Chambliss W, Garrison R, Dolnick D. 2008. Phellodendron and Citrus extracts benefit cardiovascular health in osteoarthritis patients: a double-blind, placebo-controlled pilot study. *Nutr J* **7**: 16–21.
- Ou LJ, Sun XP, Liu QD, Mi SQ, Wang NS. 2009. Effects of *Rhizoma zingiberis* and *pericarpium citri reticulatae* extracts on myocardial ischemia in rats. *Zhong Yao Cai* **32**: 1723–1726.
- Parra AL, Yherba RS, Sardinas IG, Buela I. 2001. Comparative study of the assay of *Artemia salina* L. and the estimate of the medium lethal dose (LD50 value) in mice, to determine oral acute-toxicity of plant extracts. *Phytotherapy* **8**: 395–400.
- Pellati F, Benvenuti S. 2007. Chromatographic and electrophoretic methods for the analysis of phenethylamine alkaloids in *Citrus aurantium*. *J Chromatogr A* **1171**: 71–88.
- Pellati F, Benvenuti S, Melegari M. 2004. High-pressure liquid chromatography methods for the analysis of adrenergic amines and flavanones in *Citrus aurantium* L. var. *amara*. *Phytochem Anal* **15**: 220–225.
- Pellati F, Benvenuti S, Melegari M. 2005. Enantioselective LC analysis of synephrine in natural products on a protein-based chiral stationary phase. *J Pharm Biomed Anal* **37**: 839–849.
- Pellati F, Benvenuti S, Melegari M, Firenzuoli F. 2002. Determination of adrenergic agonists from extracts and herbal products of *Citrus aurantium* L. var. *amara* by LC. *J Pharm Biomed Anal* **29**: 1113–1119.
- Penzak SR, Jann MW, Cold JA, Hon YY, Desai HD, Gurley BJ. 2001. Seville (sour) orange juice: synephrine content and cardiovascular effects in normotensive adults. *J Clin Pharmacol* **41**: 1059–1063.
- Percy DW, Adcock JL, Colon XA et al. 2010. Determination of *Citrus aurantium* protoalkaloids using HPLC with acidic potassium permanganate chemiluminescence detection. *Talanta* **80**: 2191–2195.
- Preuss HG, DiFerdinando D, Bagchi M, Bagchi D. 2002. *Citrus aurantium* as a thermogenic, weight-reduction replacement for Ephedra: an overview. *J Med* **33**: 247–264.
- Riksen NP, Smits P, Rongen GA. 2011. The cardiovascular effects of methylxanthines. *Handb Exp Pharmacol* **200**: 413–437.
- Roman MC, Betz JM, Hildreth J. 2008. Determination of synephrine in bitter orange raw materials, extracts, and dietary supplements by liquid chromatography with ultraviolet detection: single laboratory validation. *J Am Org Anal Chem Int* **90**: 68–81.
- Rossato LG, Costa VM, dePinho PG, Carylhalo F, deLourdes BM, Remiao F. 2010a. Structural isomerization of synephrine influences its uptake and ensuing glutathione depletion in rat isolated cardiomyocytes. *Arch Toxicol* doi:10.1007/s00204-010-0630-9.
- Rossato LG, Costa VM, Limberger RP, Bastos M deL, Remiao F. 2011. Synephrine: from trace concentration to massive consumption in weight-loss. *Food Chem Toxicol* **49**: 8–16.
- Rossato LG, de Pinho PG, Silva R et al. 2010b. Development and validation of a GC/IT-MS method for simultaneous quantification of the *para* and *meta*-synephrine in biological samples. *J Pharm Biomed Anal* **52**: 721–726.
- Rozec B, Gauthier C. 2006. β 3-Adrenoreceptors in the cardiovascular system: Putative roles in human pathologies. *Pharmacol Ther* **111**: 652–673.
- Sale C, Harris RC, Delves S, Corbett J. 2006. Metabolic and physiological effects of ingesting extracts of bitter orange, green tea and guarana at rest and during treadmill walking in overweight males. *Int J Obesity* **30**: 764–773.
- Sander LC, Putzbach K, Nelson BC et al. 2008. Certification of standard reference materials containing bitter orange. *Anal Bioanal Chem* **391**: 2023–2034.
- Seifert JG, Nelson A, Devonish J, Burke ER, Stohs SJ. 2011. Effect of acute administration of an herbal preparation on blood pressure and heart rate in humans. *Int J Med Sci* **8**: 192–197.
- Smedema JP, Muller GJ. 2008. Coronary spasm and thrombosis in a bodybuilder using a nutritional supplement containing synephrine, octopamine, tyramine and caffeine. *S Afr Med J* **98**: 372–373.
- Stephensen TA, Sarlay Jr R. 2009. Ventricular fibrillation associated with use of synephrine containing dietary supplement. *Mil Med* **174**: 1313–1319.
- Stohs SJ. 2010. A review and assessment of the FDA adverse events reports and clinical case reports between April 2004 and October 2009. *J Funct Foods* **2**: 235–238.
- Stohs SJ, Preuss HG, Keith SC, Keith PL, Miller H, Kaats GR. 2011. Effects of *p*-synephrine alone and in combination with selected bioflavonoids on resting metabolism, blood pressure, heart rate and self-reported mood changes. *Int J Med Sci* (submitted for publication).
- Stohs SJ, Shara M. 2007. A review of the safety and efficacy of *Citrus aurantium* in weight management. In *Obesity: Epidemiology, Pathophysiology, and Prevention*, Bagchi D, Preuss HG (eds). CRC Press: Boca Raton, FL, 371–382.
- Stohs SJ, Shara M. 2011. A review of the safety and efficacy of bitter orange (*Citrus aurantium*) and its primary protoalkaloid *p*-synephrine in weight management. In *Obesity: Epidemiology, Pathophysiology and Prevention*, 2nd edn, Bagchi D, Preuss H (eds). CRC Press: Boca Raton, FL, (in press).
- Sultan S, Spector J, Mitchell RM. 2006. Ischemic colitis associated with use of a bitter orange-containing dietary weight-loss supplement. *Mayo Clinic Proc* **81**: 1630–1631.
- Thomas JE, Munir JA, McIntyre PZ, Ferguson MA. 2009. STEMI in a 24-year-old man after use of a synephrine-containing dietary supplement. A case report and review of the literature. *Texas Heart Inst J* **36**: 586–590.
- Titta L, Trenei M, Sendardo M et al. 2010. Blood orange juice inhibits fat accumulation in mice. *Int J Obesity* **34**: 578–588.
- Tounsi MS, Wannas WA, Ouerghemmi I et al. 2010. Juice components and antioxidant capacity of four Tunisian *Citrus* varieties. *J Sci Food Agric* **91**: 142–151.
- Tsujiya T, Takaku T. 2007. Lipolysis induced by segment wall extract from Satsuma mandarin orange (*Citrus unshu* Mark). *J Nutr Sci Vitaminol* **53**: 547–551.
- Uckoo RM, Jayaprakasha GK, Nelson DS, Patil BS. 2010. Rapid simultaneous determinations of amines and organic acids in citrus using high-performance liquid chromatography. *Talanta* **83**: 948–954.
- Yang A, Palmer AA, DeWit H. 2010. Genetics of caffeine consumption and responses to coffee. *Psychopharmacology* **211**: 245–257.
- Zenk JL, Leikam SA, Kassen LJ, Kushowski MA. 2005. Effect of Lean System 7 on metabolic rate and body composition. *Nutrition* **21**: 179–185.