

SKARPNÄCK

Kalkylunderlag 150622 - rev 150626



AXELOTH Arkitekter

SUMMA ALLA TOMTER

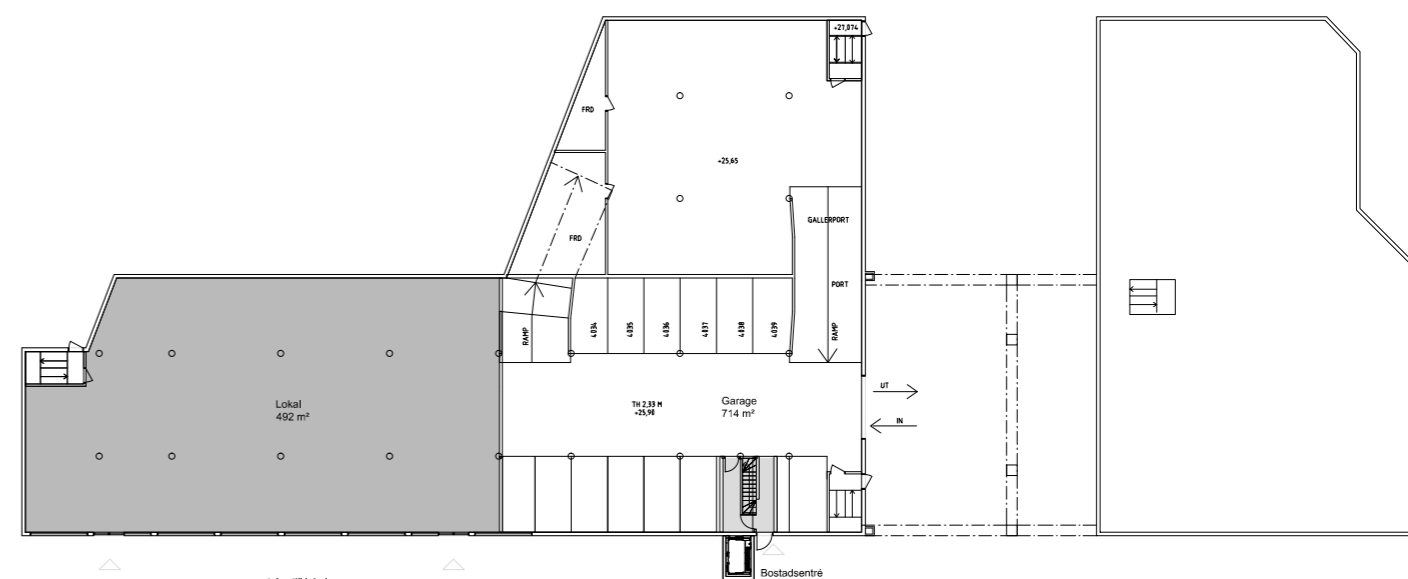
	BTA	LOA	BOA	Lägenhetstyp tot antal	Bia	ppl
Befintlig BTA	9165	492				294
Ny BTA	10588		6698,5	233	752	

Nyckeltal BOA/nyBTA 0,63

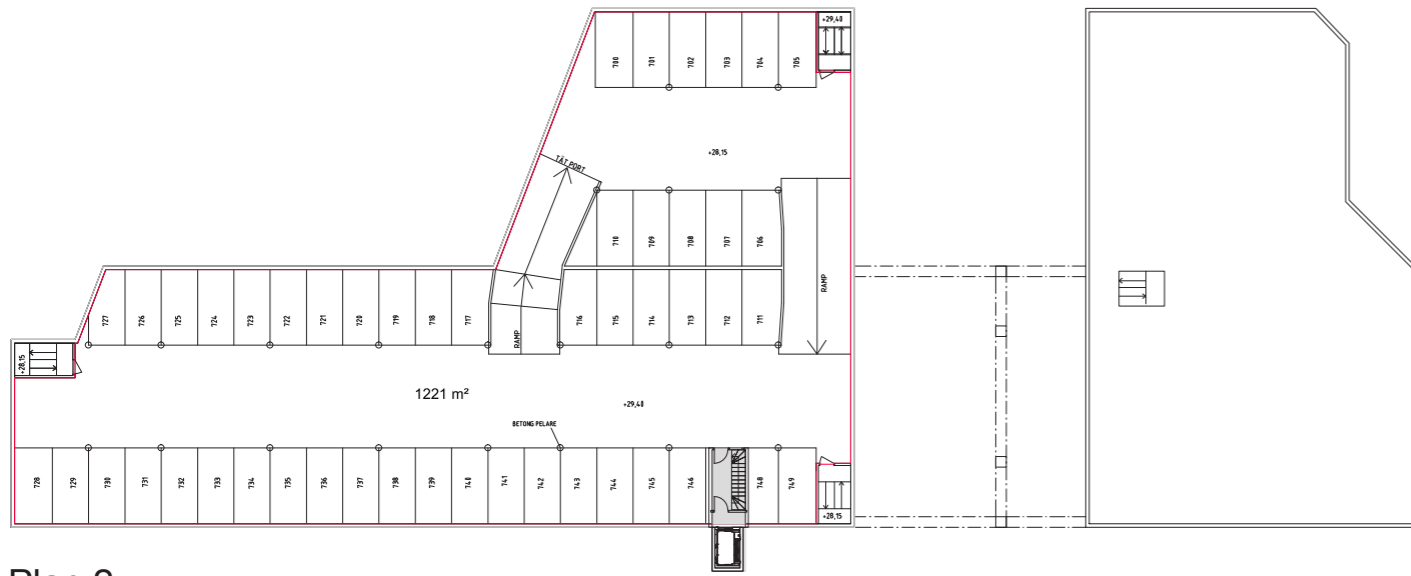
PROJEKTVIS REDOVISNING

Pilotgatan

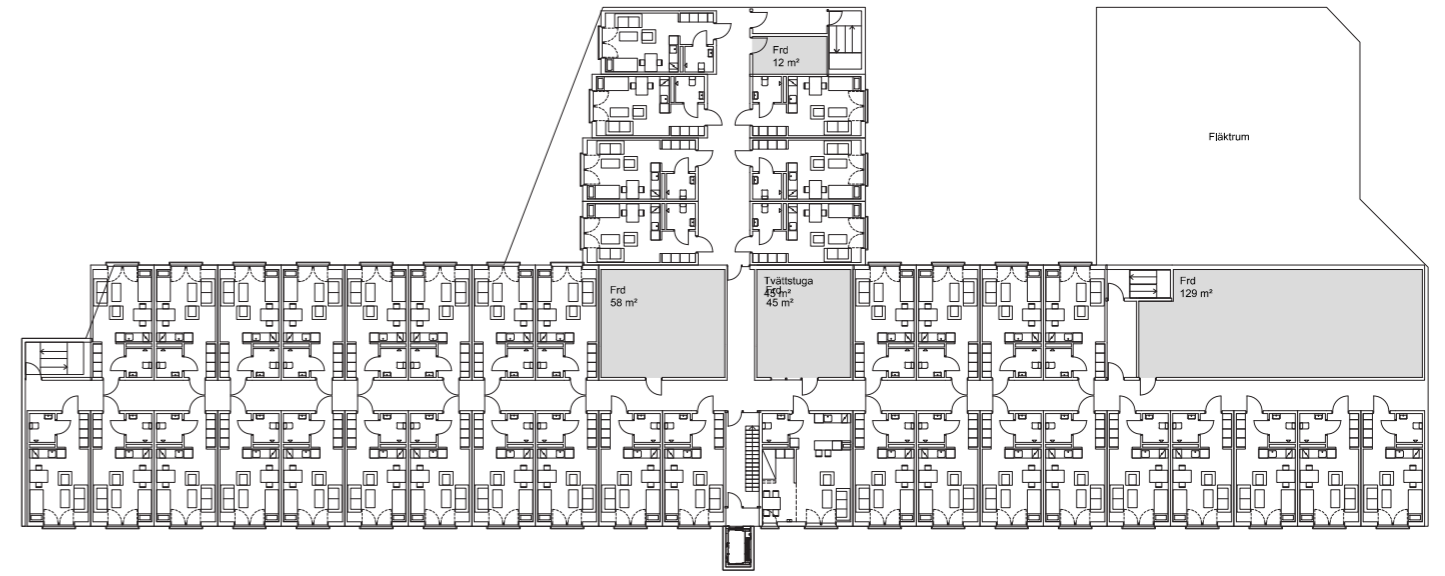
	BTA	LOA	BOA	Lägenhetstyp				Bia	ppl
				enkelrum 27,5 kvm	alkov 41,5 kvm	dubblett 62 kvm	tot antal		
plan 1	1296	492						13	
plan 2	1296							49	
plan 3	2243							70	
plan 4	1898		1114	39	1		40	244	
plan 5	1898		1224	43	1		44	128	
plan 6	1701		1059	37	1		38	128	
	10332	492	3397	119	3		122	500	132



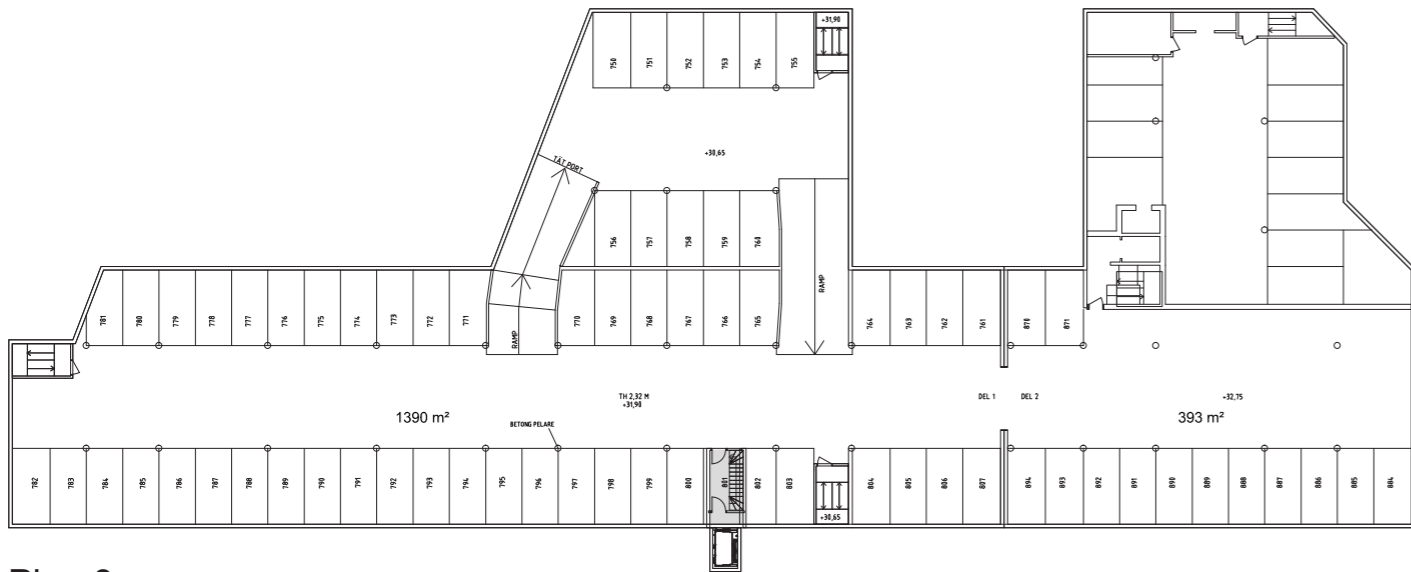
Plan 1



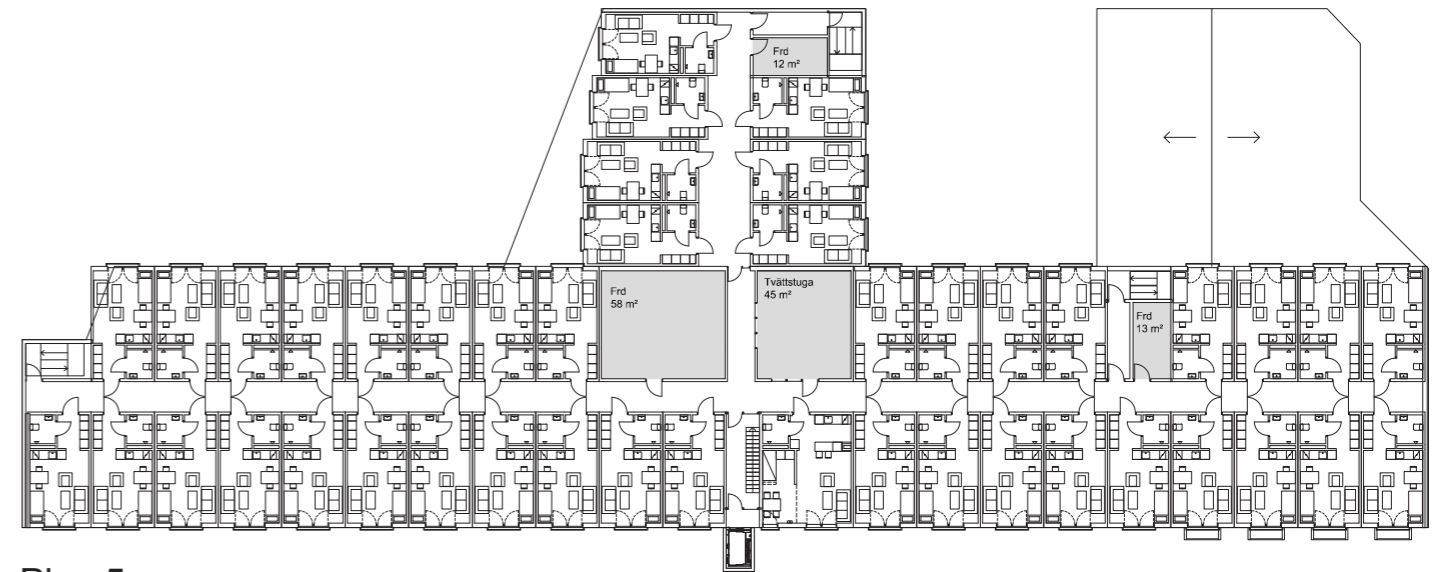
Plan 2



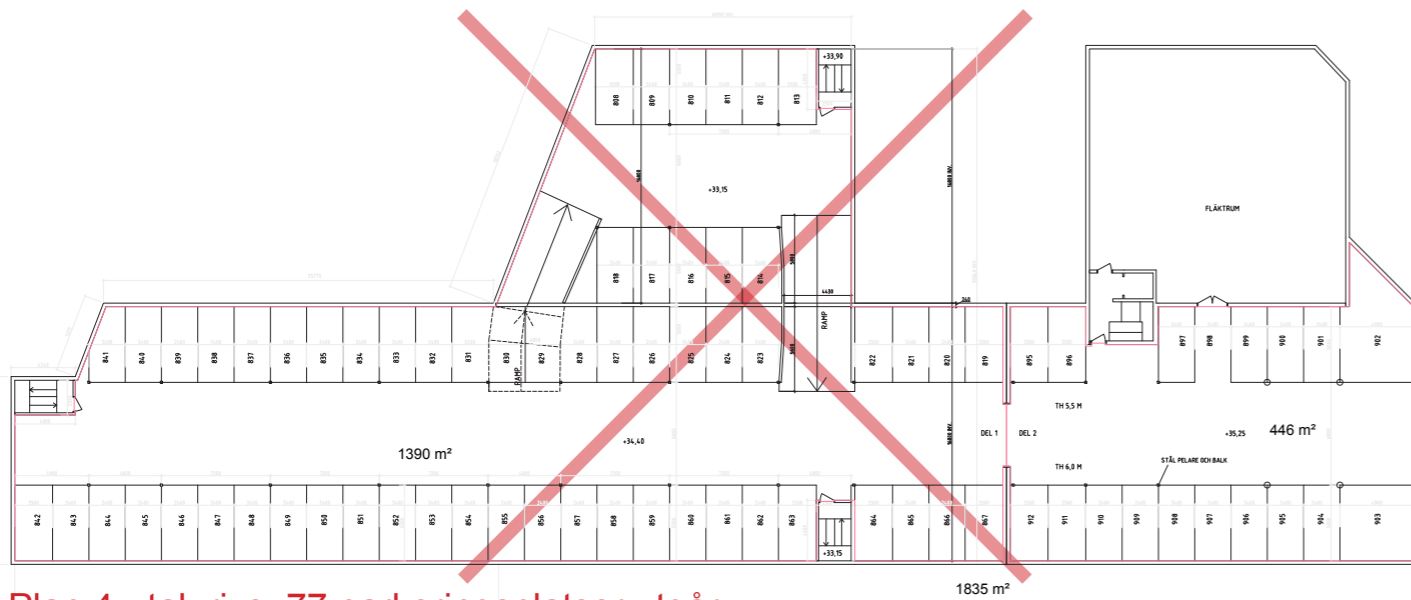
Plan 4 - ny layout



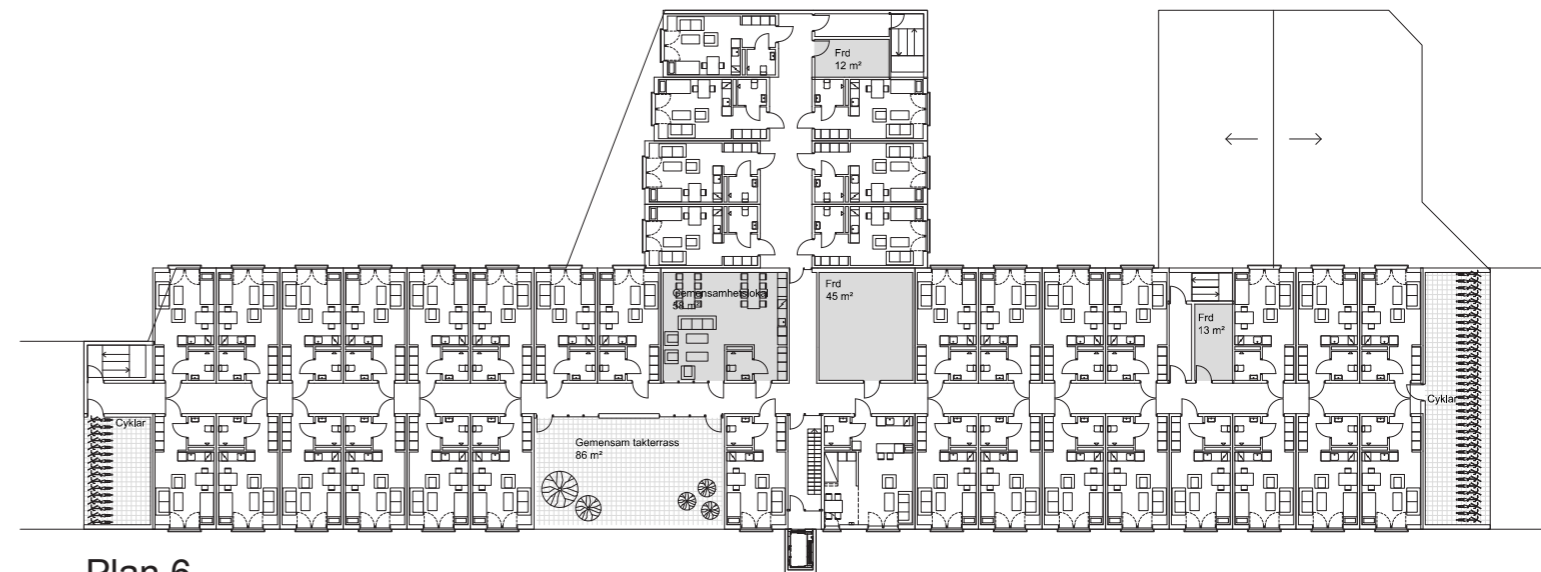
Plan 3



Plan 5



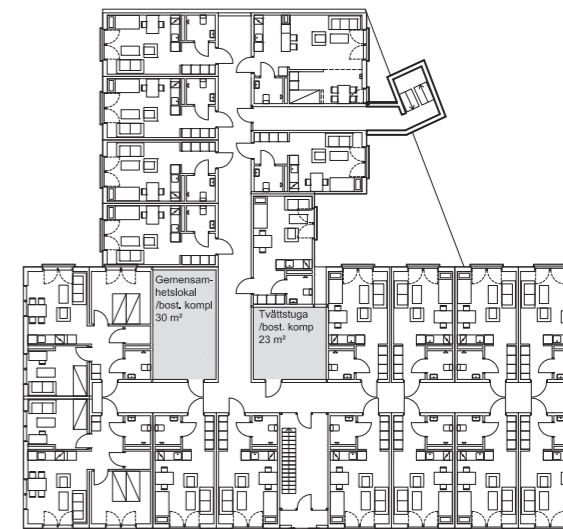
Plan 4 - tak rivs, 77 parkeringsplatser utgår



Plan 6

Segelflygsvägen

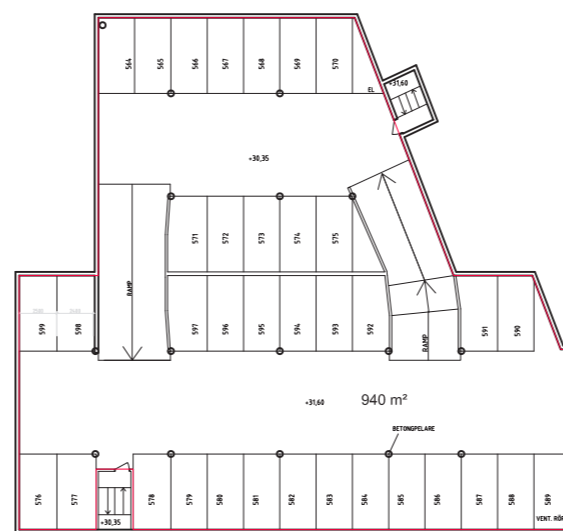
	BTA	LOA	BOA	Lägenhetstyp				Bia	ppl
				enkelrum 27,5 kvm	alkov 41,5 kvm	dubblett 62 kvm	tot antal		
plan 1	902							31	
plan 2	902							32	
plan 3	993							36	
plan 4	935		605,5	16	1	2	19	53	
plan 5	935		605,5	16	1	2	19	53	
plan 6	935		605,5	16	1	2	19	53	
	5602		1816,5	48	3	6	57	159	



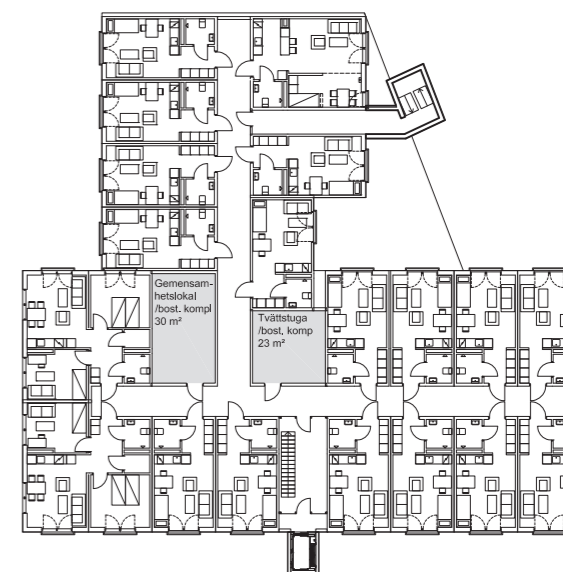
Plan 4 - ny layout



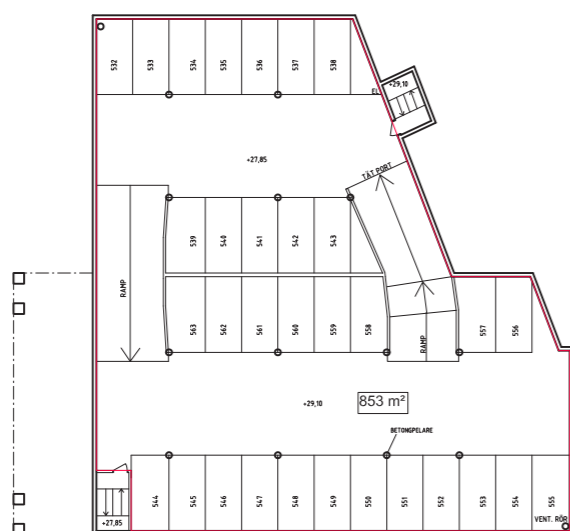
Plan 1



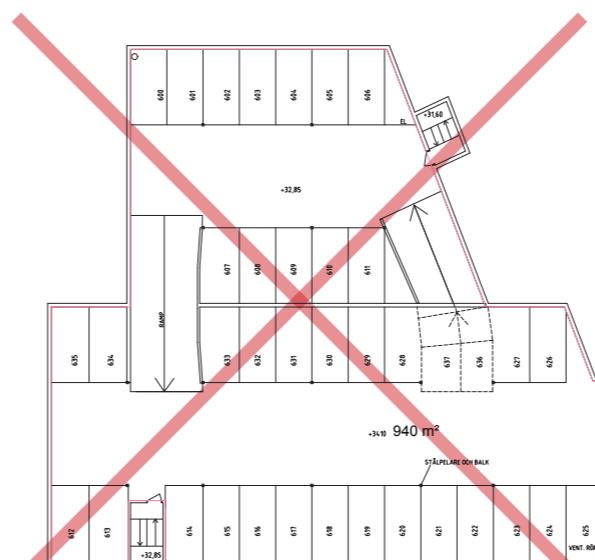
Plan 3



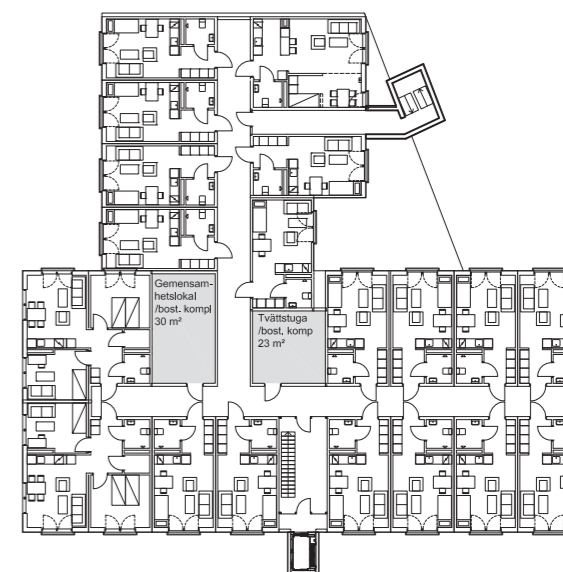
Plan 5



Plan 2

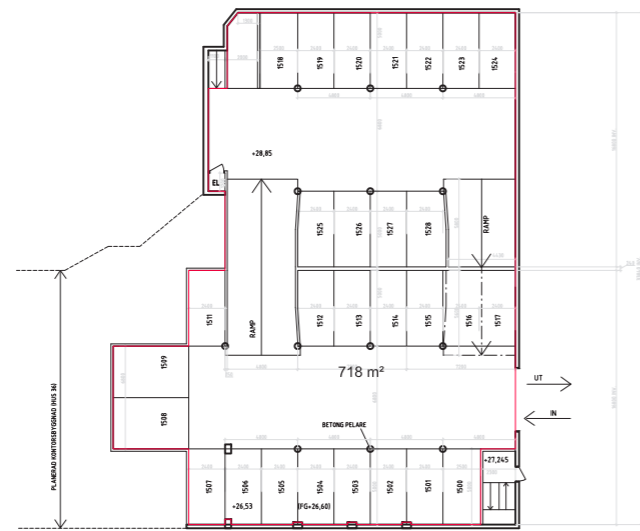


Plan 4 - tak rivs, 38 parkeringsplatser utgåår



Plan 6

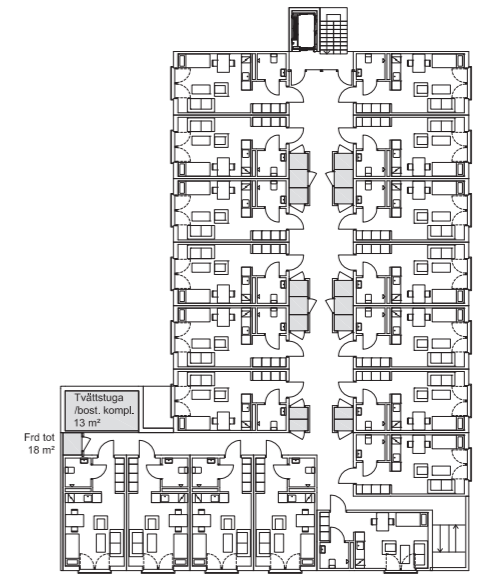
	BTA	LOA	BOA	Lägenhetstyp				Bia	ppl
				enkelrum 27,5 kvm	alkov 41,5 kvm	dubblett 62 kvm	tot antal		
plan 1	760							28	
plan 2	773							25	
plan 3	762		495	18			18	31	
plan 4	762		495	18			18	31	
plan 5	762		495	18			18	31	
	3819		1485	54			54	93	
								53	



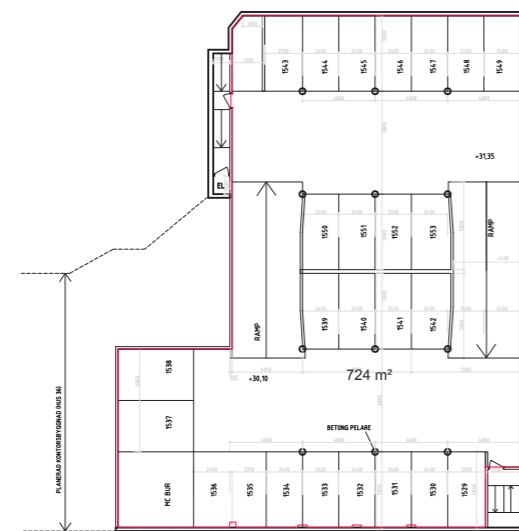
Plan 1



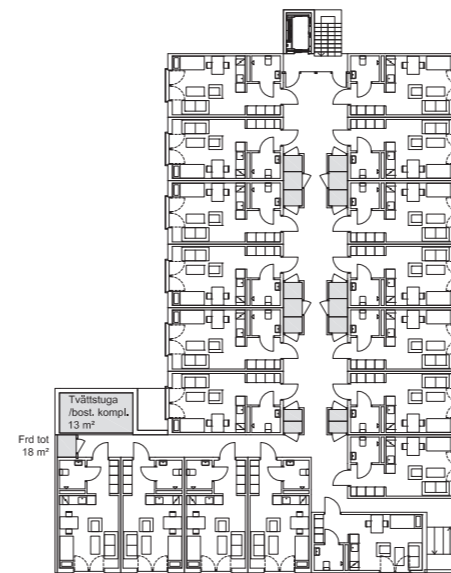
Plan 3 - tak rivs, 27 parkeringsplatser utgår



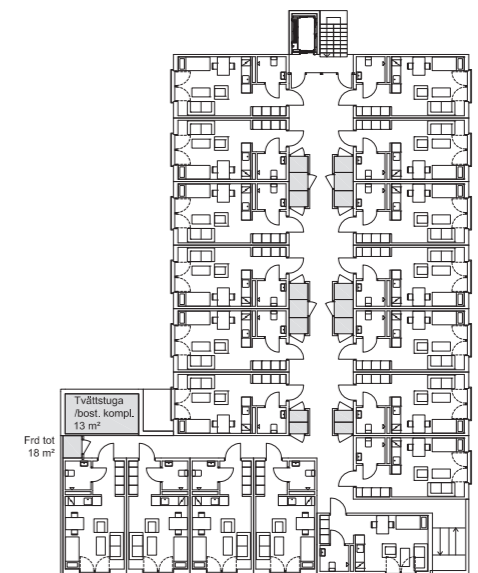
Plan 4



Plan 2



Plan 3 - ny layout



Plan 5