

BILAGA 1





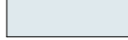
Inplaceringsförslag för skola och förskola i fastigheten Kilaberg 1

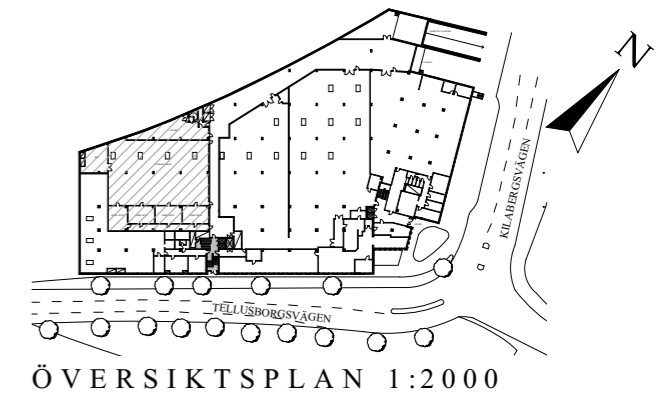
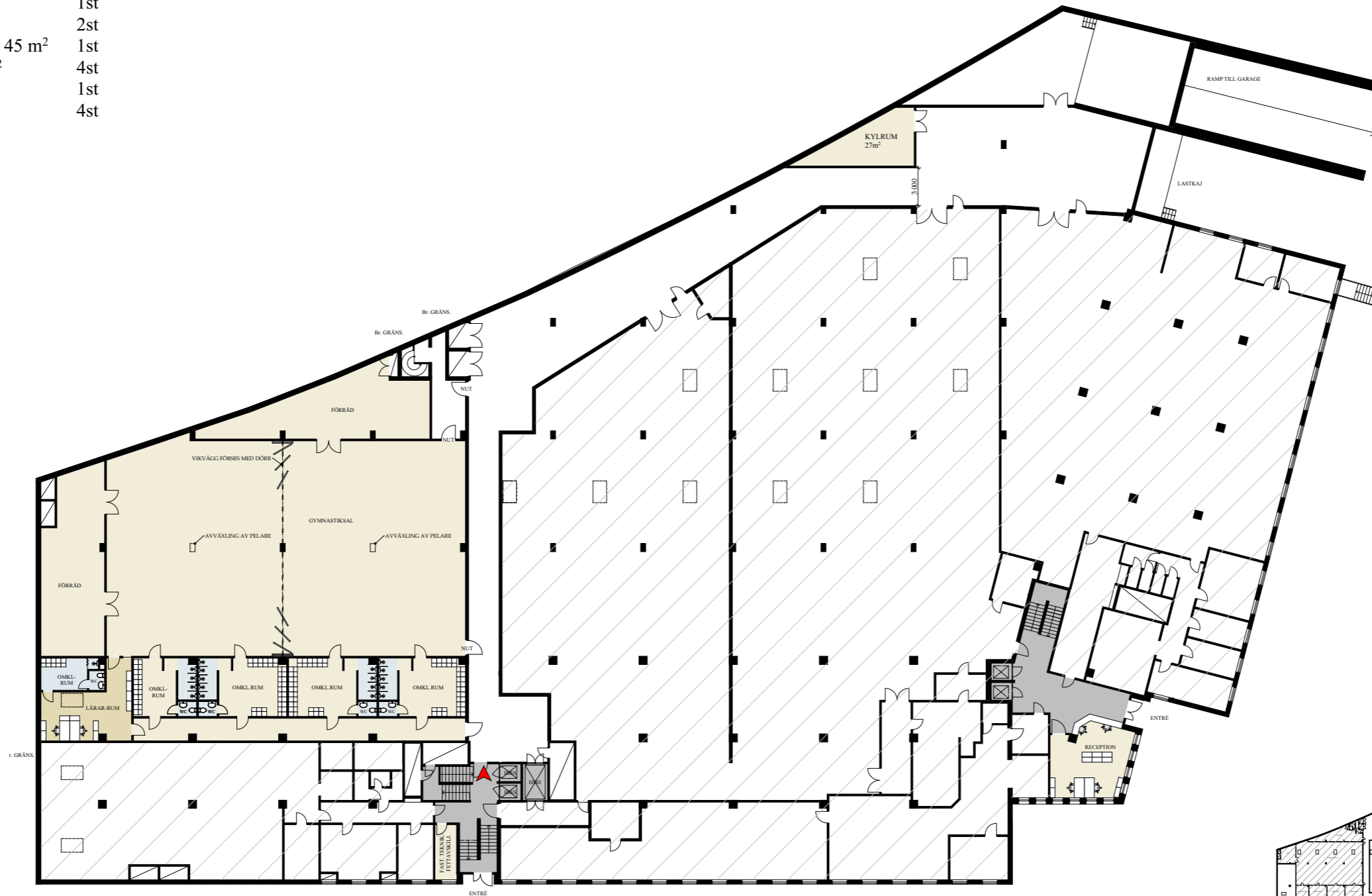
Senast uppdaterade
2016-06-29

RUMSFUNKTION

ANTAL

GYMNASTIKSAL ca 490 m² 1st
 FÖRRÅD ca 70 m² 2st
 LÄRARRUM / OMKL.RUM ca 45 m² 1st
 OMKLÄDNINGSRUM ca 30 m² 4st
 RECEPTION ca 35m² 1st
 WC 4st

-  TRAPPHALL
-  KONTOR
-  KLASSRUM
-  ALLMÄN YTA
-  WC, HWC & STÄD



KV. KILABERG 1 - PLAN 2 (ENDAST SOM ALT 1)


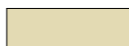



FÖRSLAG HYRESGÄST - YTA ~ 902 m²

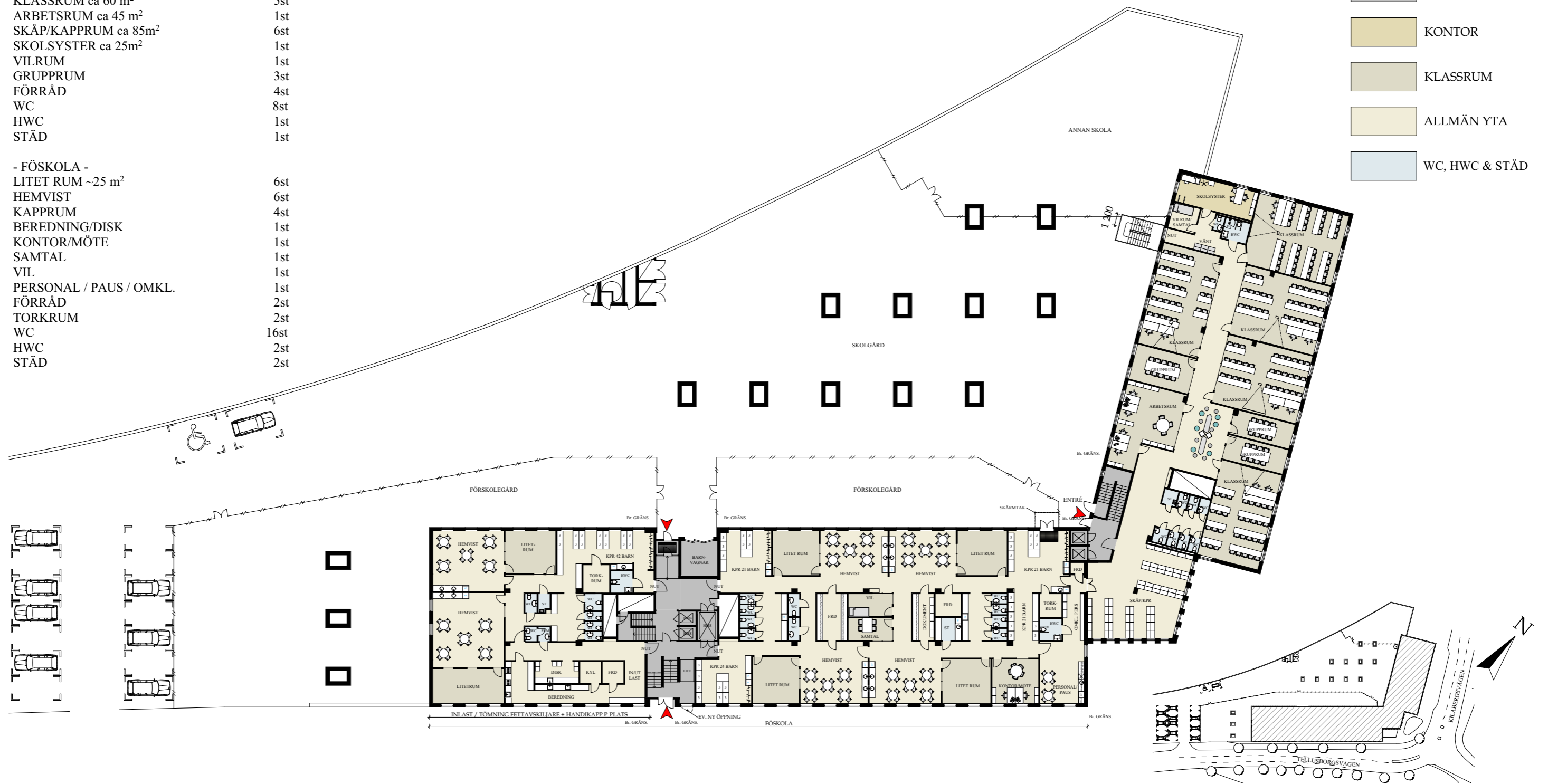
ILLUSTRATIONSRTNING SKALA A3 1:400 - 2015-05-26



RUMSFUNKTION	ANTAL
KLASSRUM ca 60 m ²	5st
ARBETSRUM ca 45 m ²	1st
SKÅP/KAPPRUM ca 85m ²	6st
SKOLSYSTER ca 25m ²	1st
VILRUM	1st
GRUPPRUM	3st
FÖRRÅD	4st
WC	8st
HWC	1st
STÄD	1st

- FÖSKOLA -	
LITET RUM ~25 m ²	6st
HEMVIST	6st
KAPPRUM	4st
BEREDNING/DISK	1st
KONTOR/MÖTE	1st
SAMTAL	1st
VIL	1st
PERSONAL / PAUS / OMKL.	1st
FÖRRÅD	2st
TORKRUM	2st
WC	16st
HWC	2st
STÄD	2st

-  TRAPPHALL
-  KONTOR
-  KLASSRUM
-  ALLMÄN YTA
-  WC, HWC & STÄD



ÖVERSIKTSPLAN 1:2000



KV. KILABERG 1 - PLAN 3, 1tr
 FÖRSLAG HYRESGÄST - YTA ~ 1 677 m²
 ILLUSTRATIONS-RITNING SKALA A3 1:400 - 2015-05-26



FÖRSKOLEGÅRD



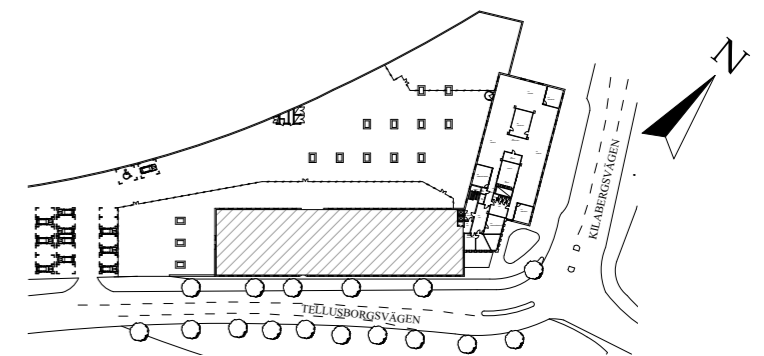
RUMSFUNKTION

LITET RUM ~25 m²
 HEMVIST
 KAPPRUM
 BEREDNING/DISK
 KONTOR/MÖTE
 SAMTAL
 VIL
 PERSONAL / PAUS / OMKL.
 FÖRRÅD
 TORKRUM
 WC
 HWC
 STÄD

ANTAL

6st
 6st
 4st
 1st
 1st
 1st
 1st
 1st
 2st
 2st
 16st
 2st
 2st

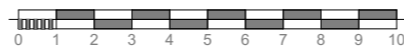
- TRAPPHALL
- KONTOR/MÖTE
- LITET RUM/VIL/SAMTAL
- ALLMÄN YTA
- WC, HWC & STÄD



ÖVERSIKTSPLAN 1:2000



KV. KILABERG 1 - PLAN 3, 1 tr
 FÖRSLAG FÖRSKOLA - YTA ~ 983 m²
 ILLUSTRATIONSRTNING SKALA A3 1:200 - 2016-06-29

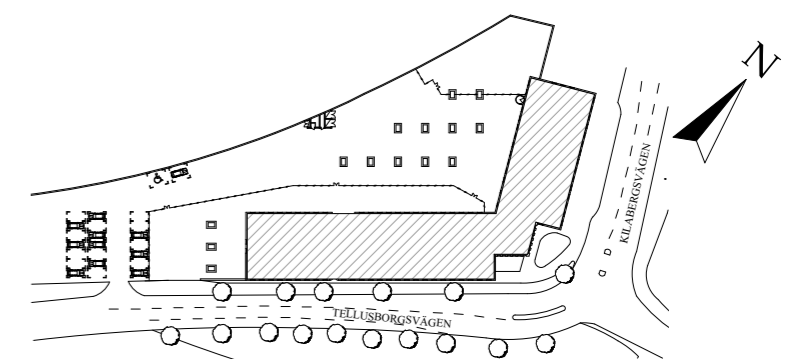
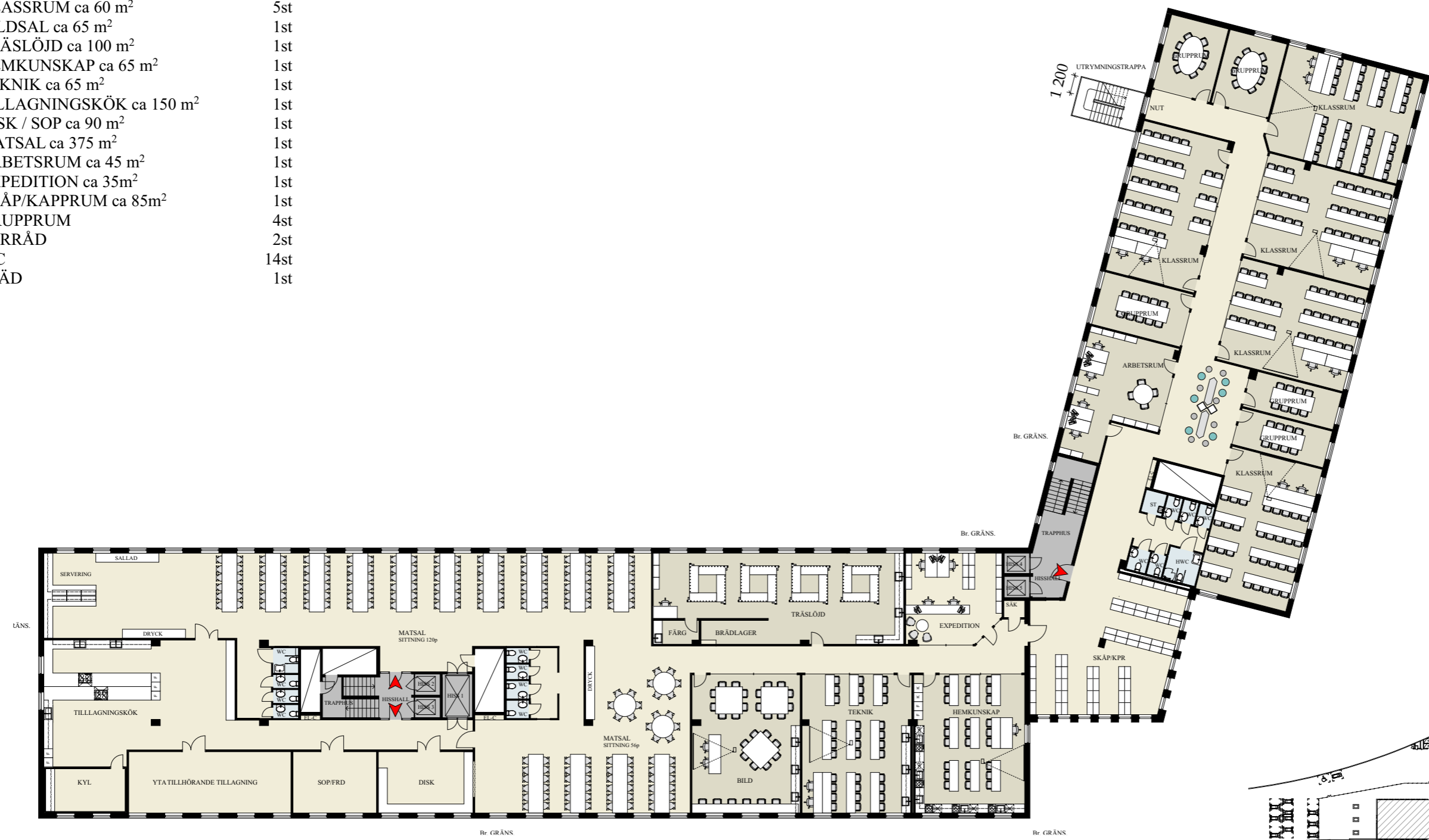


RUMSFUNKTION

ANTAL

KLASSRUM ca 60 m ²	5st
BILDSAL ca 65 m ²	1st
TRÄSLÖJD ca 100 m ²	1st
HEMKUNSKAP ca 65 m ²	1st
TEKNIK ca 65 m ²	1st
TILLAGNINGSKÖK ca 150 m ²	1st
DISK / SOP ca 90 m ²	1st
MATSAL ca 375 m ²	1st
ARBETSRUM ca 45 m ²	1st
EXPEDITION ca 35m ²	1st
SKÅP/KAPPRUM ca 85m ²	1st
GRUPPRUM	4st
FÖRRÅD	2st
WC	14st
STÄD	1st

- TRAPPHALL
- KONTOR
- KLASSRUM
- ALLMÄN YTA
- WC, HWC & STÄD



ÖVERSIKTSPLAN 1:2000



KV. KILABERG 1 - PLAN 5, 3tr
 FÖRSLAG HYRESGÄST - YTA ~ 1 766m²
 ILLUSTRATIONSRITNING SKALA A3 1:300 - 2015-05-26

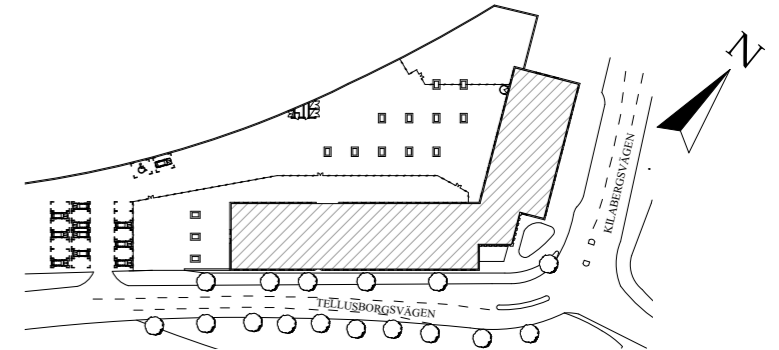
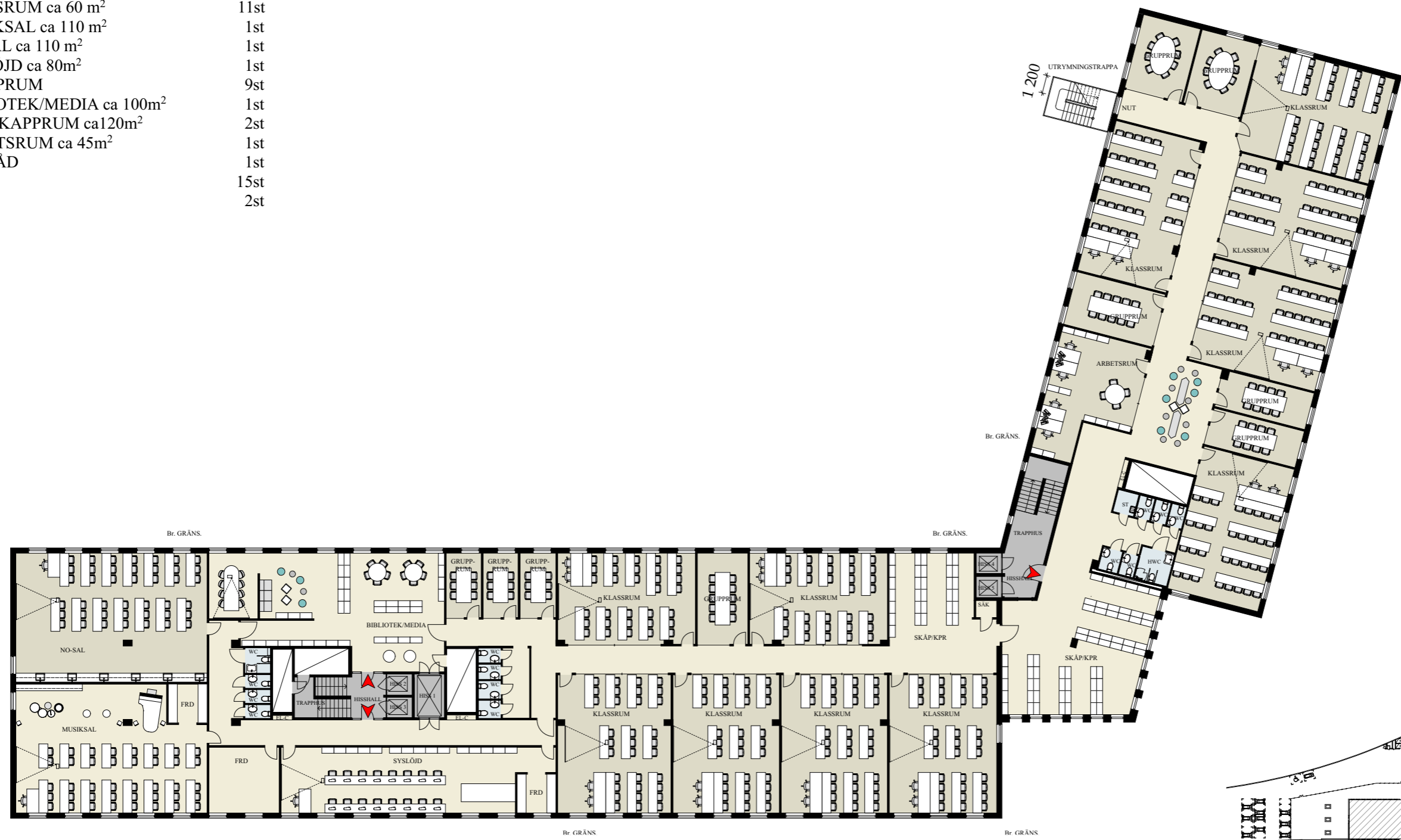


RUMSFUNKTION

ANTAL

KLASSRUM ca 60 m ²	11st
MUSIKSAL ca 110 m ²	1st
NO-SAL ca 110 m ²	1st
SYSLÖJD ca 80m ²	1st
GRUPPRUM	9st
BIBLIOTEK/MEDIA ca 100m ²	1st
SKÅP/KAPPRUM ca 120m ²	2st
ARBETSRUM ca 45m ²	1st
FÖRRÅD	1st
WC	15st
STÄD	2st

- TRAPPHALL
- KONTOR
- KLASSRUM
- ALLMÄN YTA
- WC, HWC & STÄD



ÖVERSIKTSPLAN 1:2000







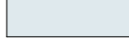
KV. KILABERG 1 - PLAN 6, 4tr
 FÖRSLAG HYRESGÄST - YTA ~ 1 766m²
 ILLUSTRATIONSRTNING SKALA A3 1:300 - 2015-05-26

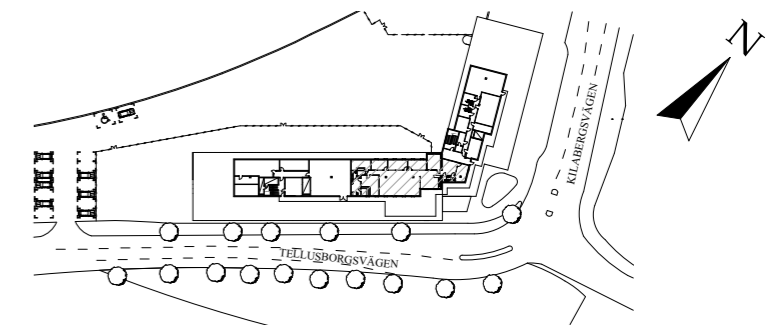
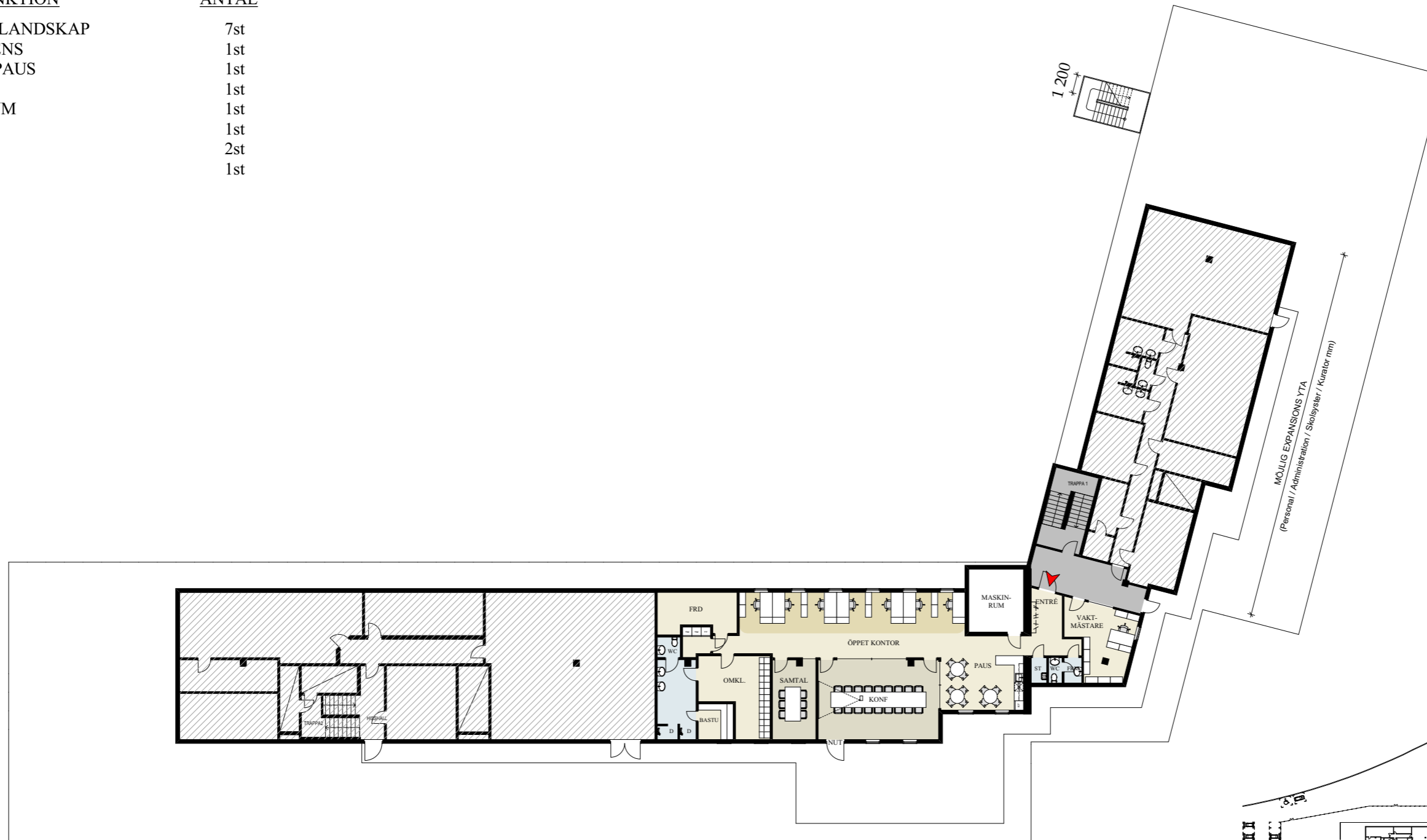


RUMSFUNKTION

ANTAL

KONTOR LANDSKAP	7st
KONFERENS	1st
PENTRY/PAUS	1st
FÖRRÅD	1st
OMKL.RUM	1st
BASTU	1st
WC	2st
STÄD	1st

	TRAPPHALL
	KONTOR
	KLASSRUM
	ALLMÄN YTA
	WC, HWC & STÄD



ÖVERSIKTSPLAN 1:2000

KV. KILABERG 1 - PLAN 7, 5tr (ENDAST SOM ALT. 1)

FÖRSLAG HYRESGÄST - YTA ~ 240m²

ILLUSTRATIONS-RITNING SKALA A3 1:300 - 2015-05-26

