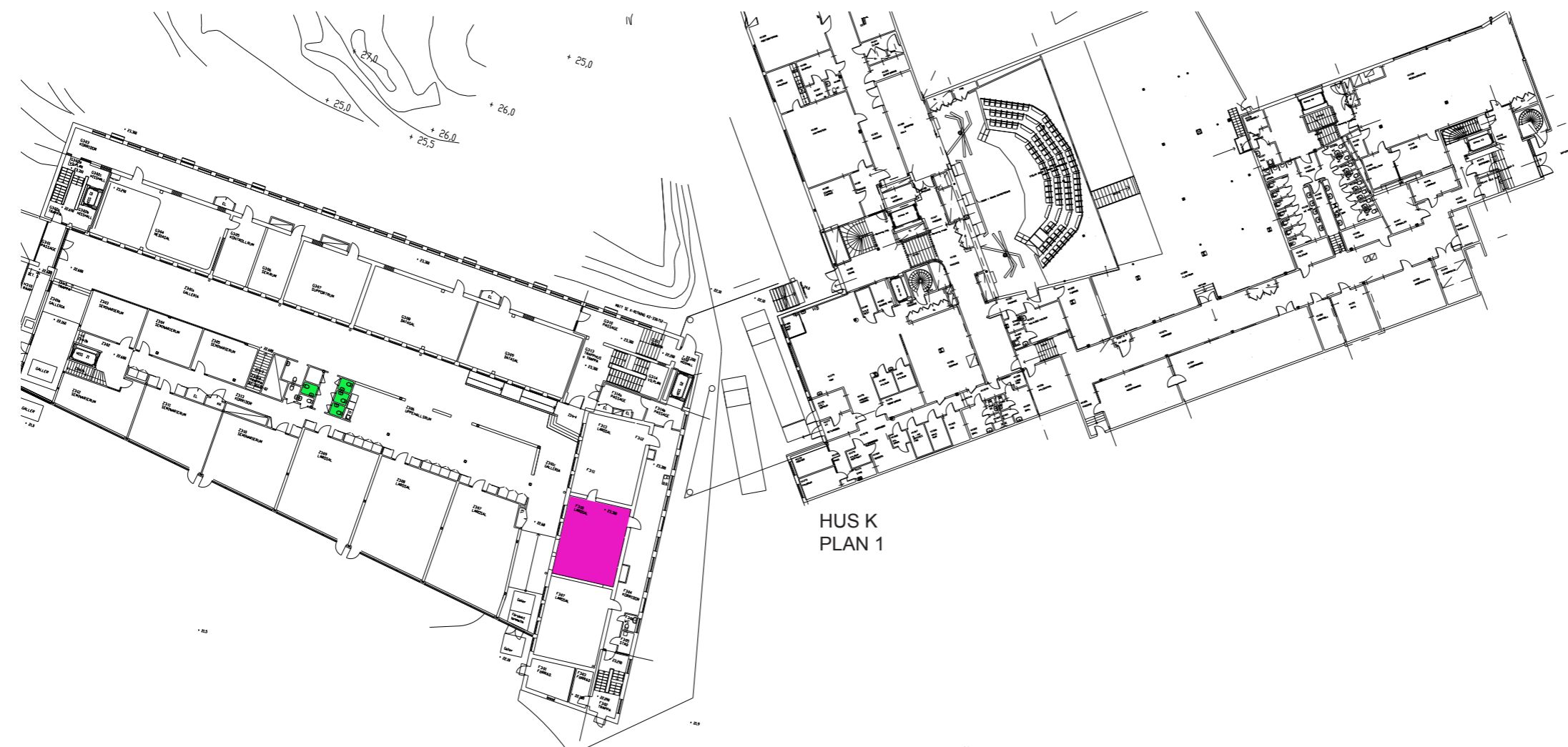




- wc befintliga/nya
- Lärosalar
- Grupprum
- Personalarbetsplatser
- Skolledning / Kansli / vktm
- NO-salar
- Slöjd / bild
- Hemkunskap
- Skolhälsa
- Musik /drama
- Fritids
- Mediatek / aula / hörsal

HUS F G Z
PLAN 2

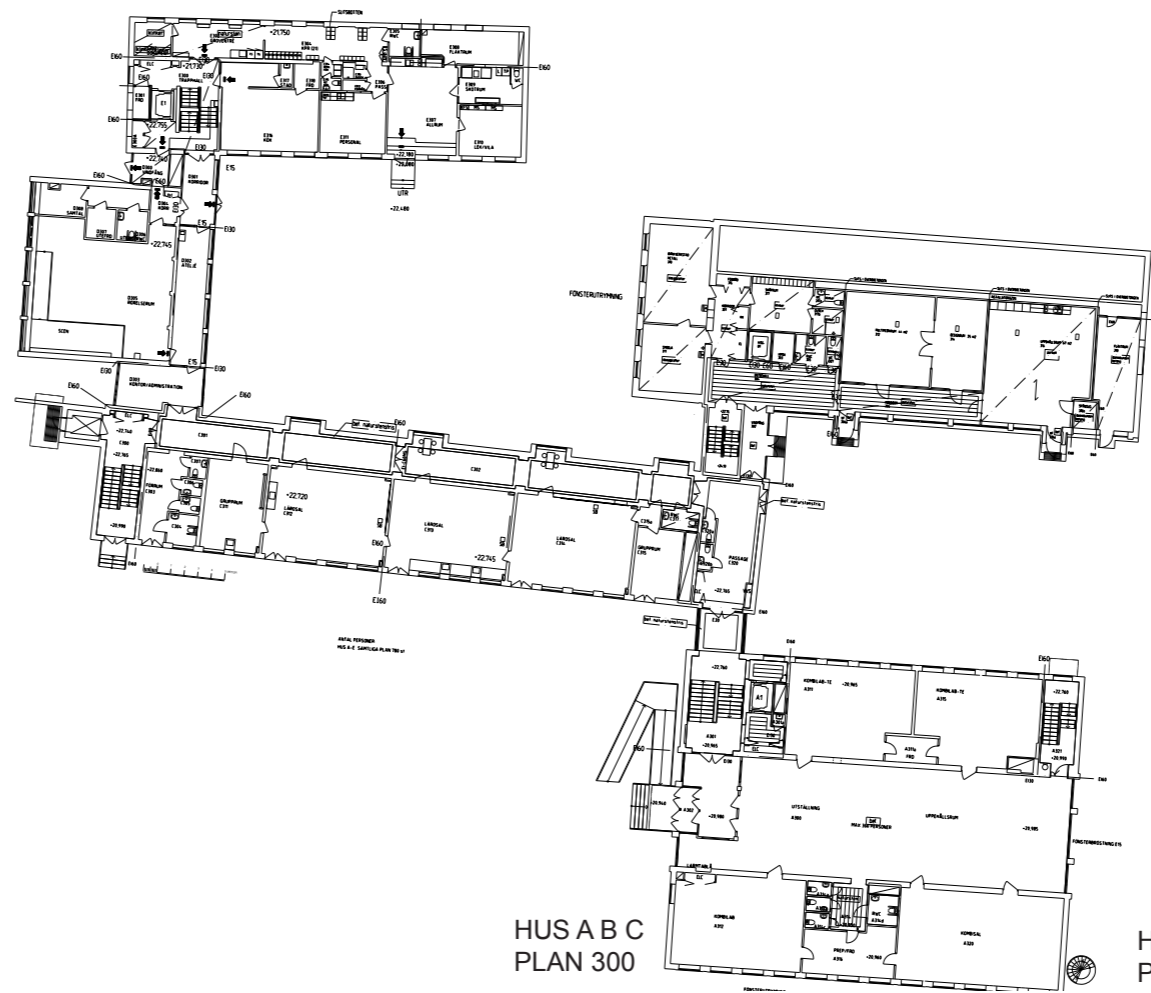
	WC Bef.	WC Nya	WC Tot	Varav HWC	LÄROSALAR	SPECIALSALAR
A	200	1	3	4	1	
	300	4	4	4	1	
	400		2	2	4	
	500	3	3	1	2	
			13	3	11	
B	300	3	3	1	-	Textilslöjd
	400		1	1	-	Slöjd & bild
		1	4	2		
C	200	2	2	2		Hemkunskap
	300	7	7	2	3	
	400	9	9	2	3	
			18	4	6	
O	200	11	11	2	2	Musik / drama
	300	6	9	1	9	Elevhälsa
	400	5	7	2	10	
	500				-	arkivpersonal
			27	5	21	
F	3	1	1		3	
	4	4	4	1	2	
			5	1	5	
G	3				4	
	4				4	
					8	
Z	2	8	8		-	
	3	3	7	1	5	
	4	13	13	2	4	
			28	3	9	
K	1	16	16	1	-	
	2	6	6	1	-	
	3	12	12	2	5	3 NO-salar
	4	8	8	2	3	3 NO-salar
			42	6	8	
tot			137	24	68	



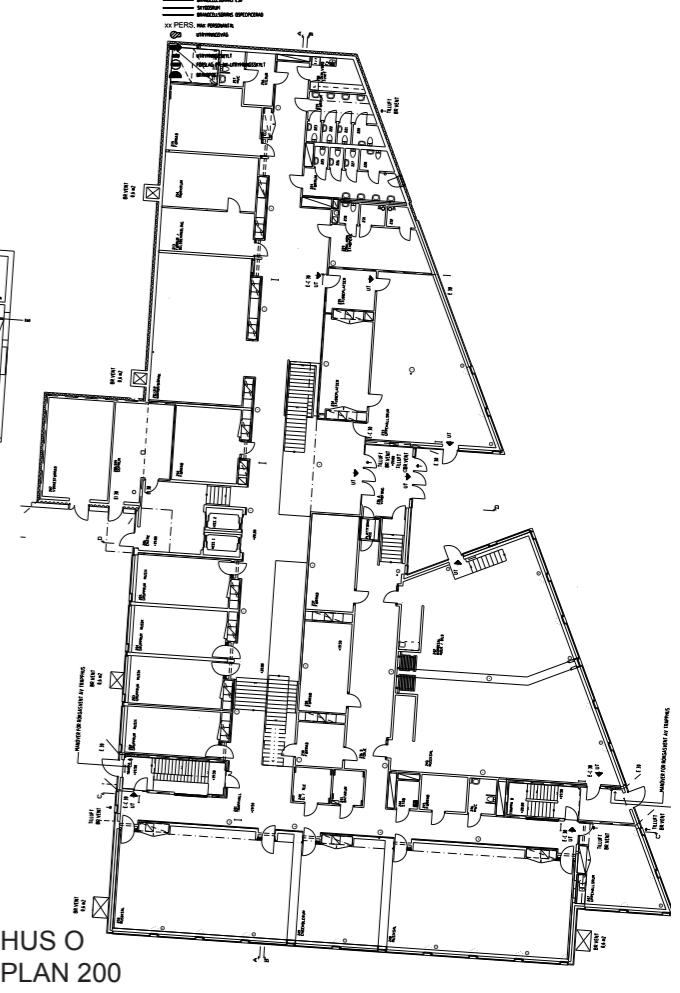
HUS K
PLAN 1



HUS F G Z
PLAN 3



HUS A B C
PLAN 300

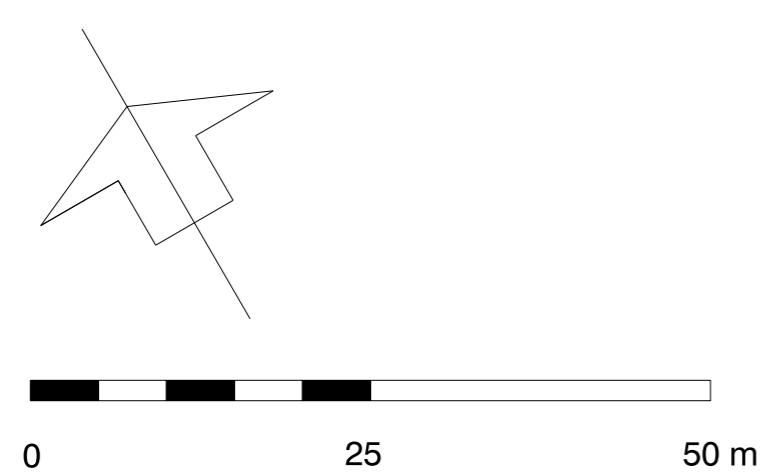


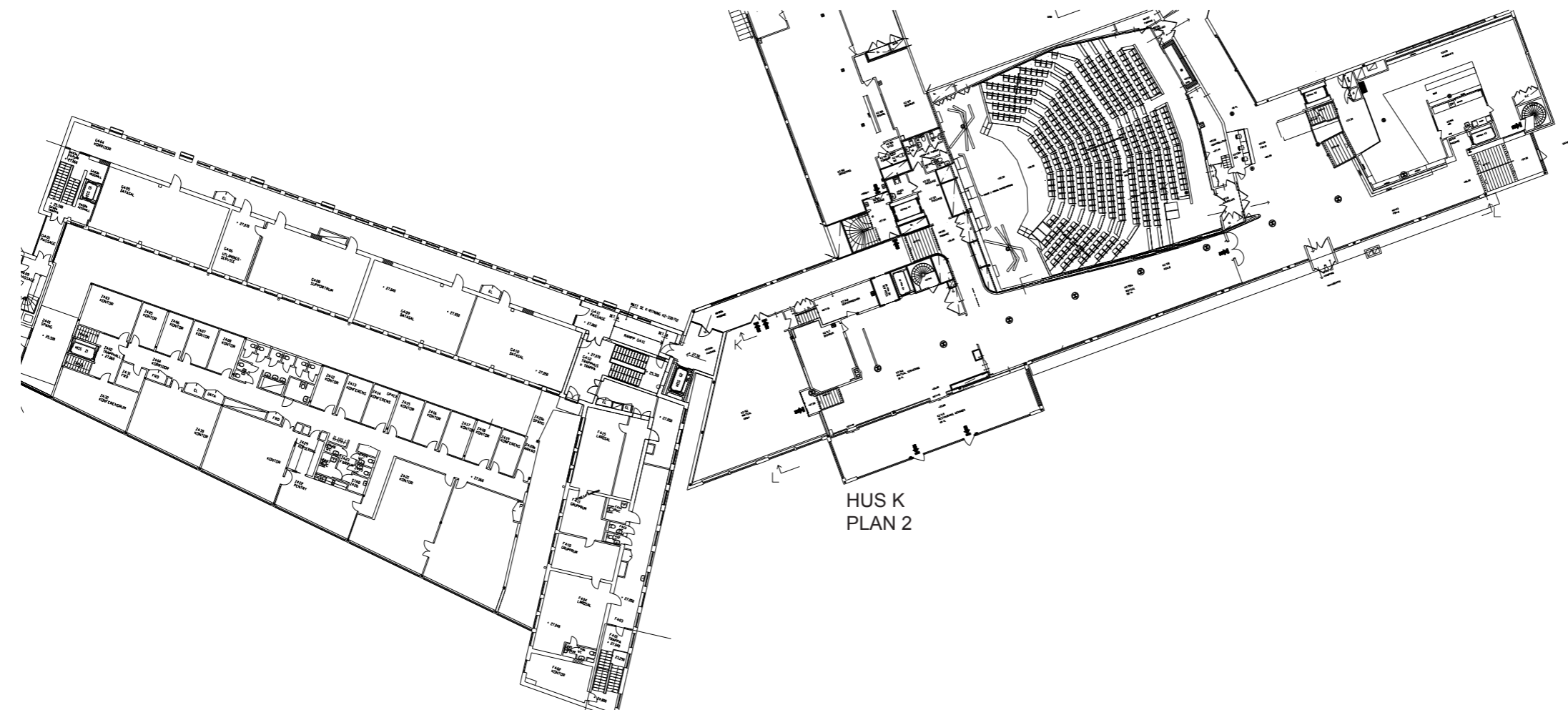
HUS O
PLAN 200

- wc befintliga/nya
- Lärosalar
- Grupprum
- Personalarbetsplatser
- Skolledning / Kansli / vktm
- NO-salar
- Slöjd / bild
- Hemkunskap
- Skolhälsa
- Musik /drama
- Fritids
- Mediatek / aula / hörsal

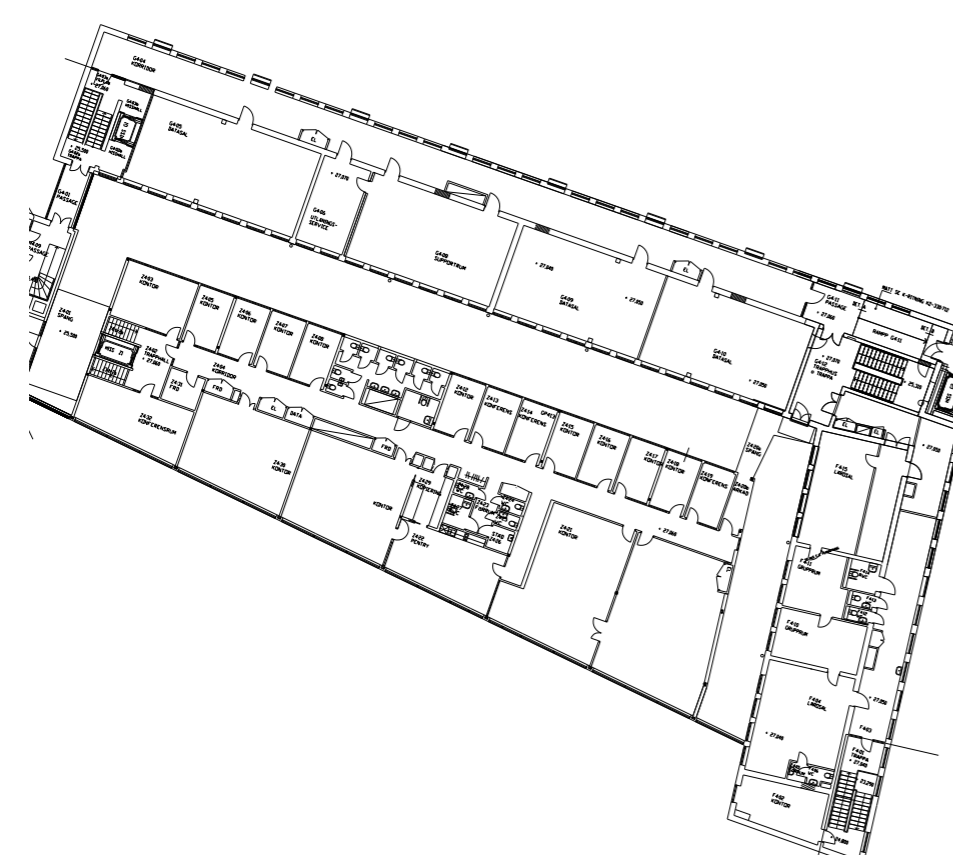
FORLÄSNINGAR

PERL

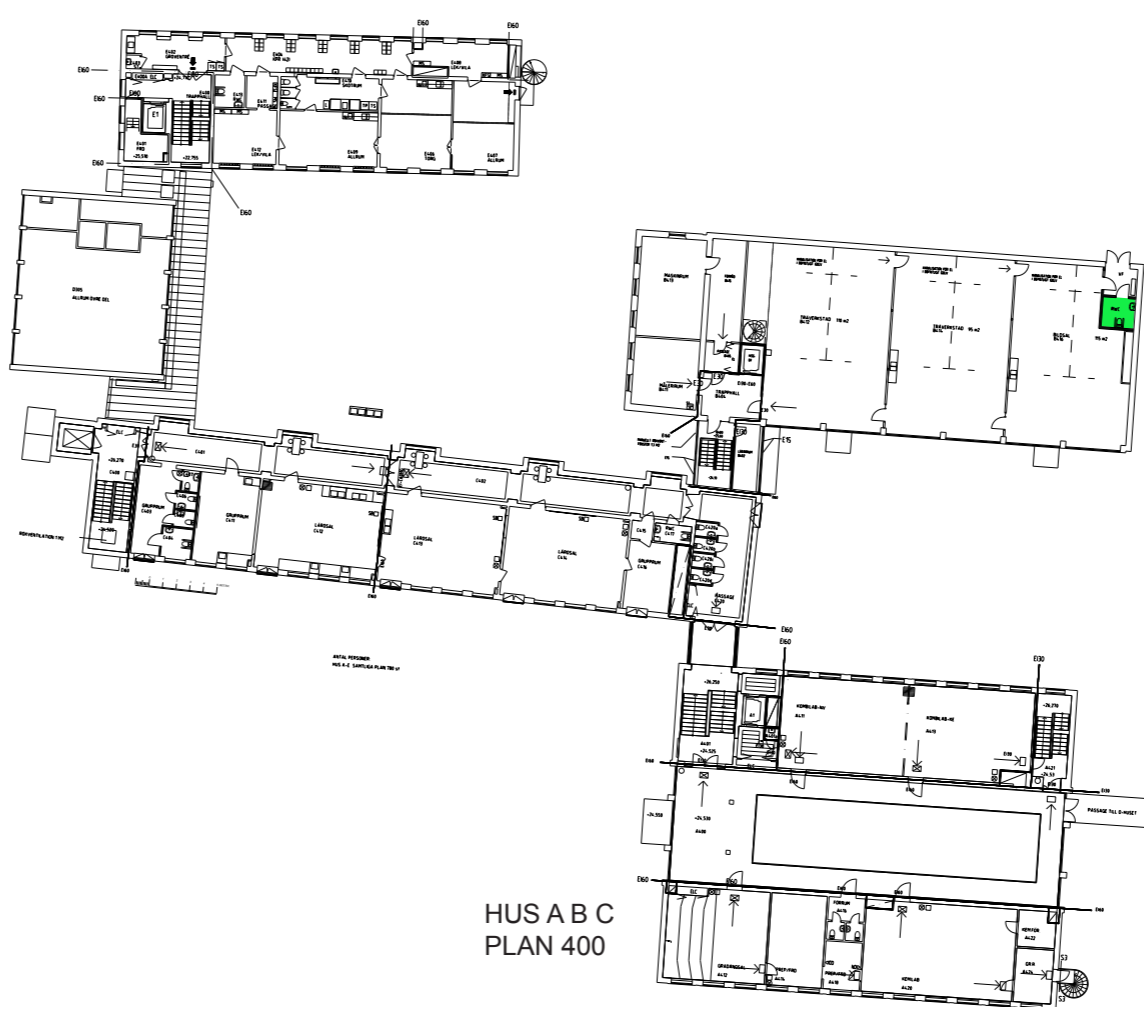




HUS K
PLAN 2



HUS F G Z
PLAN 4

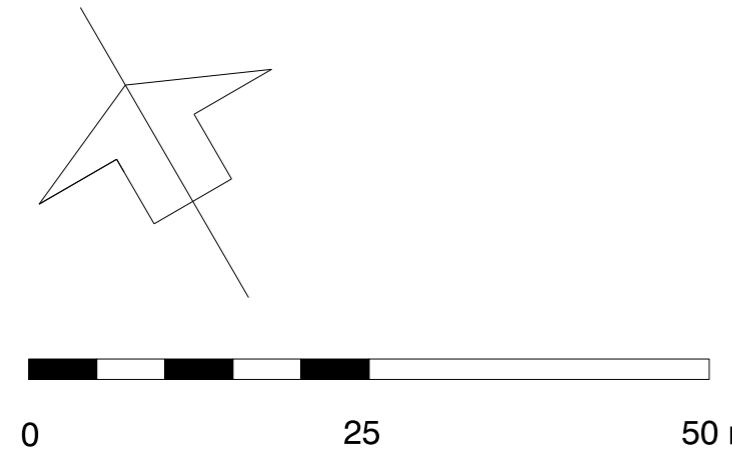


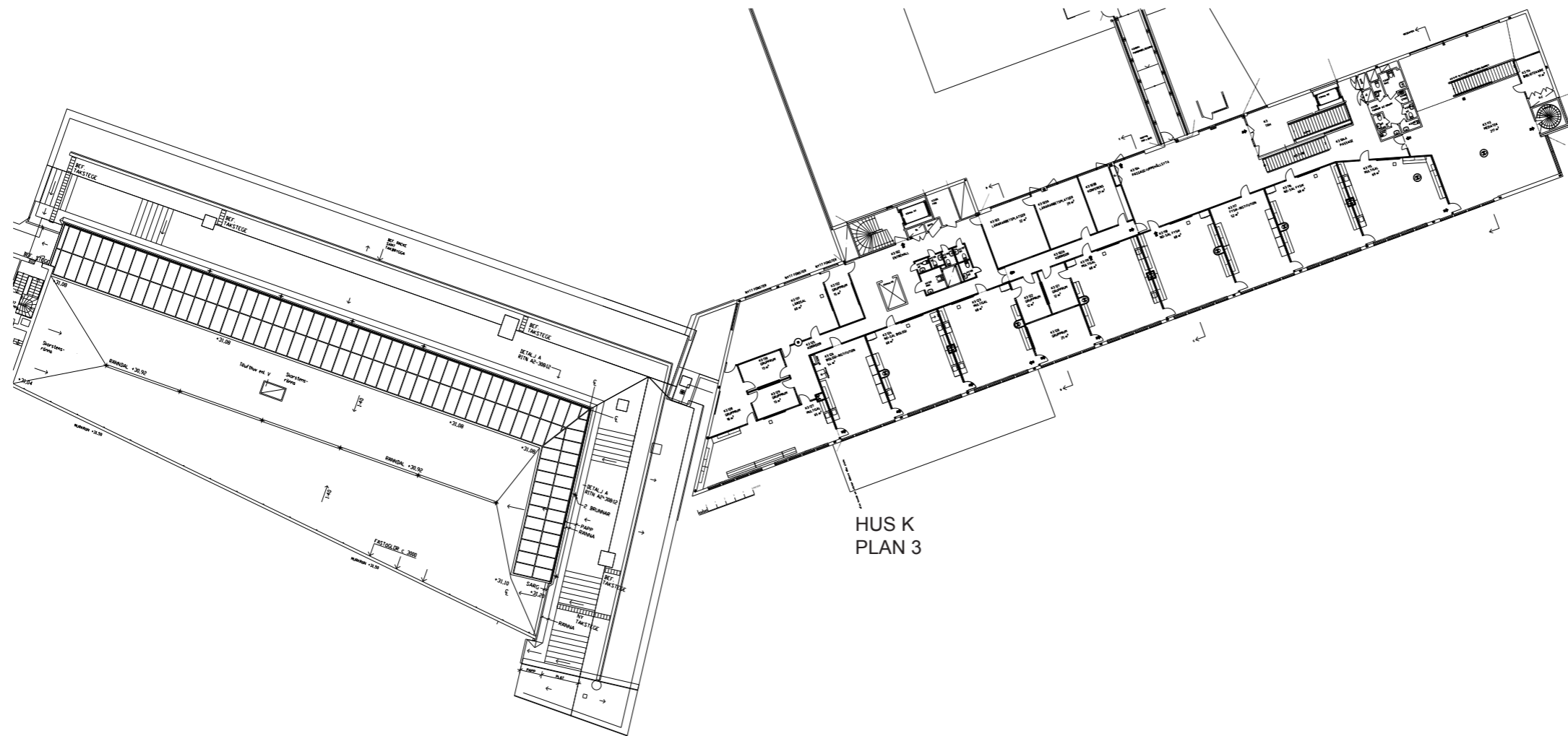
HUS A B C
PLAN 400



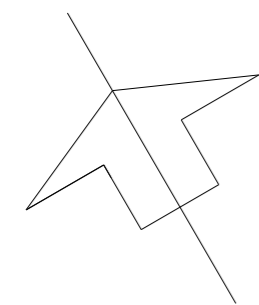
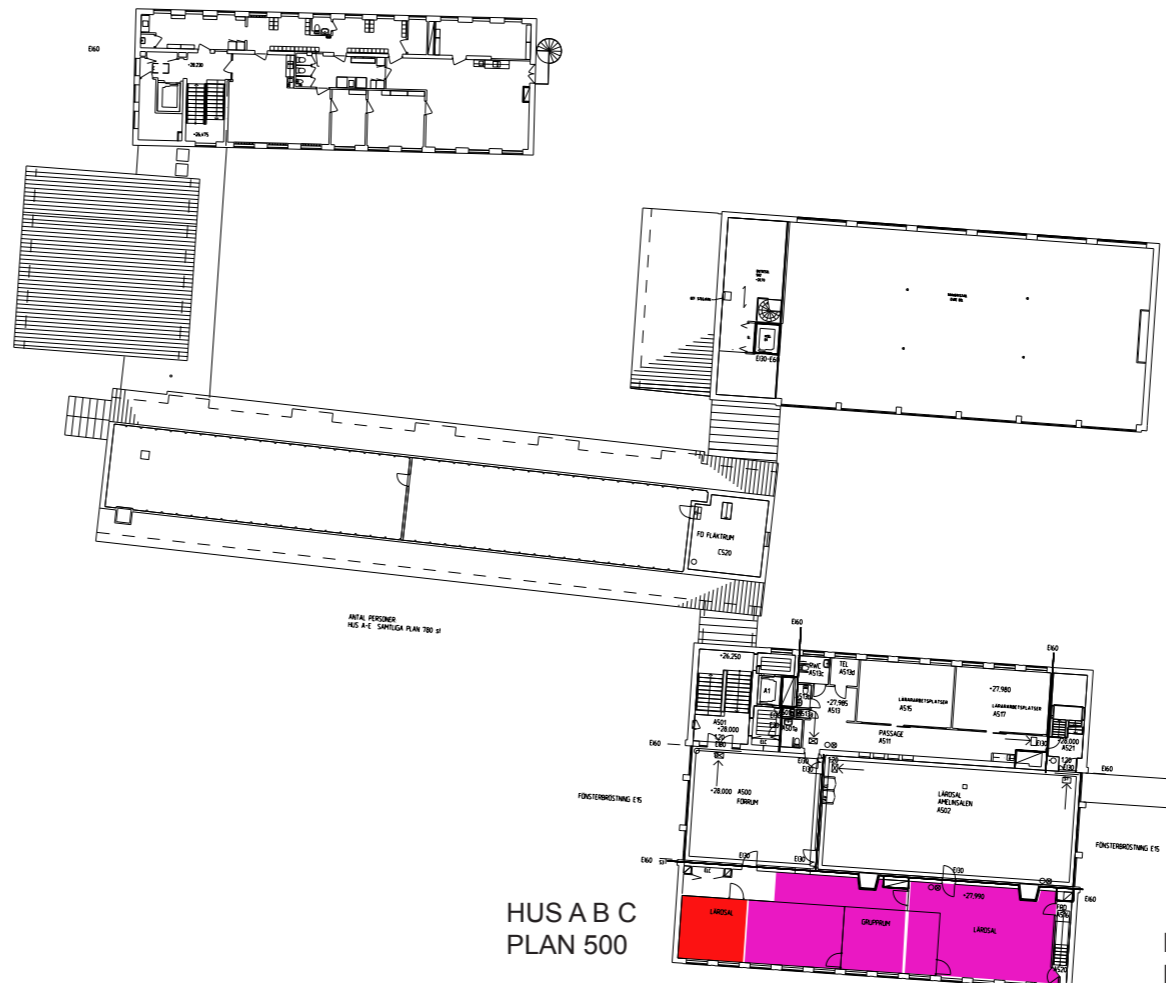
HUS O
PLAN 300

- wc befintliga/nya
- Lärosalar
- Grupprum
- Personalarbetsplatser
- Skolledning / Kansli / vktm
- NO-salar
- Slöjd / bild
- Hemkunskap
- Skolhälsa
- Musik /drama
- Fritids
- Mediatek / aula / hörsal

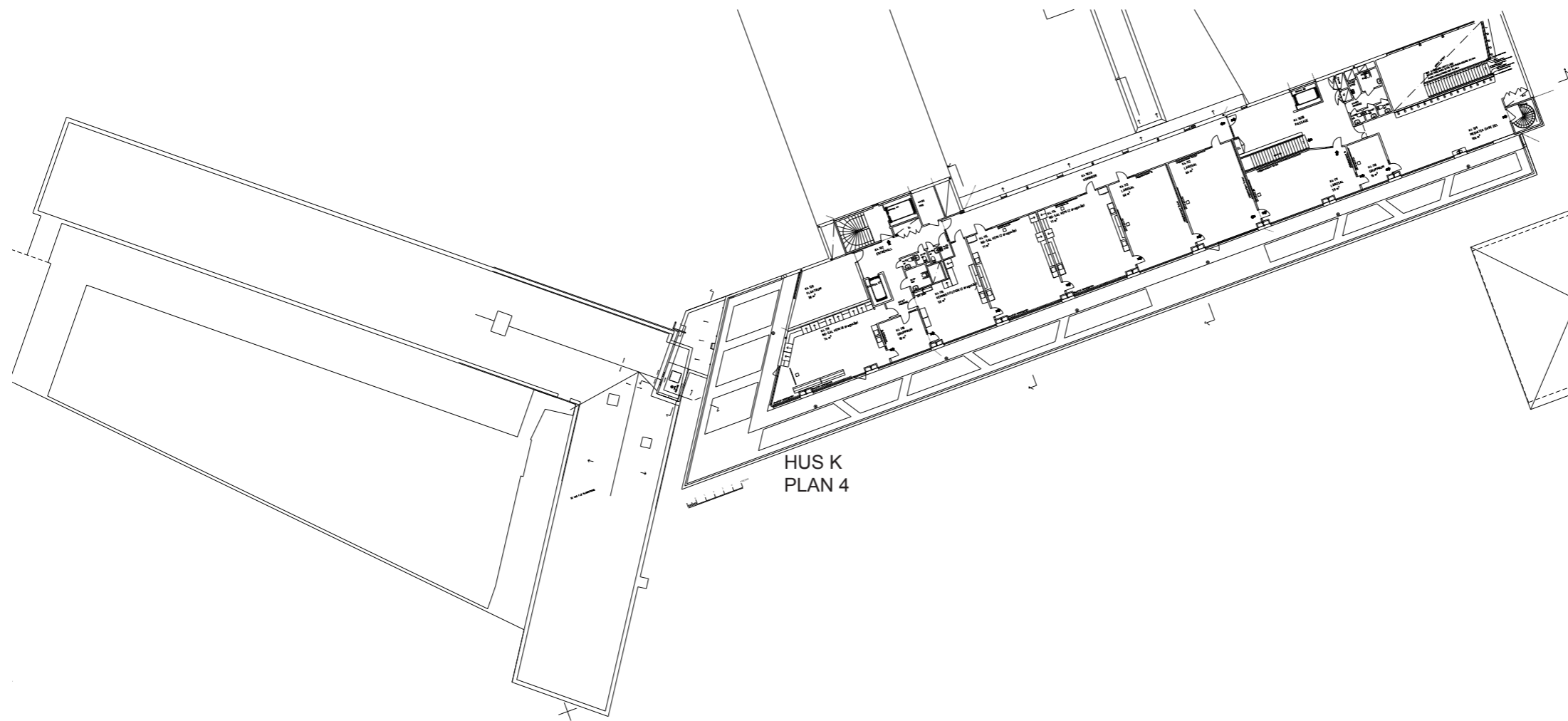




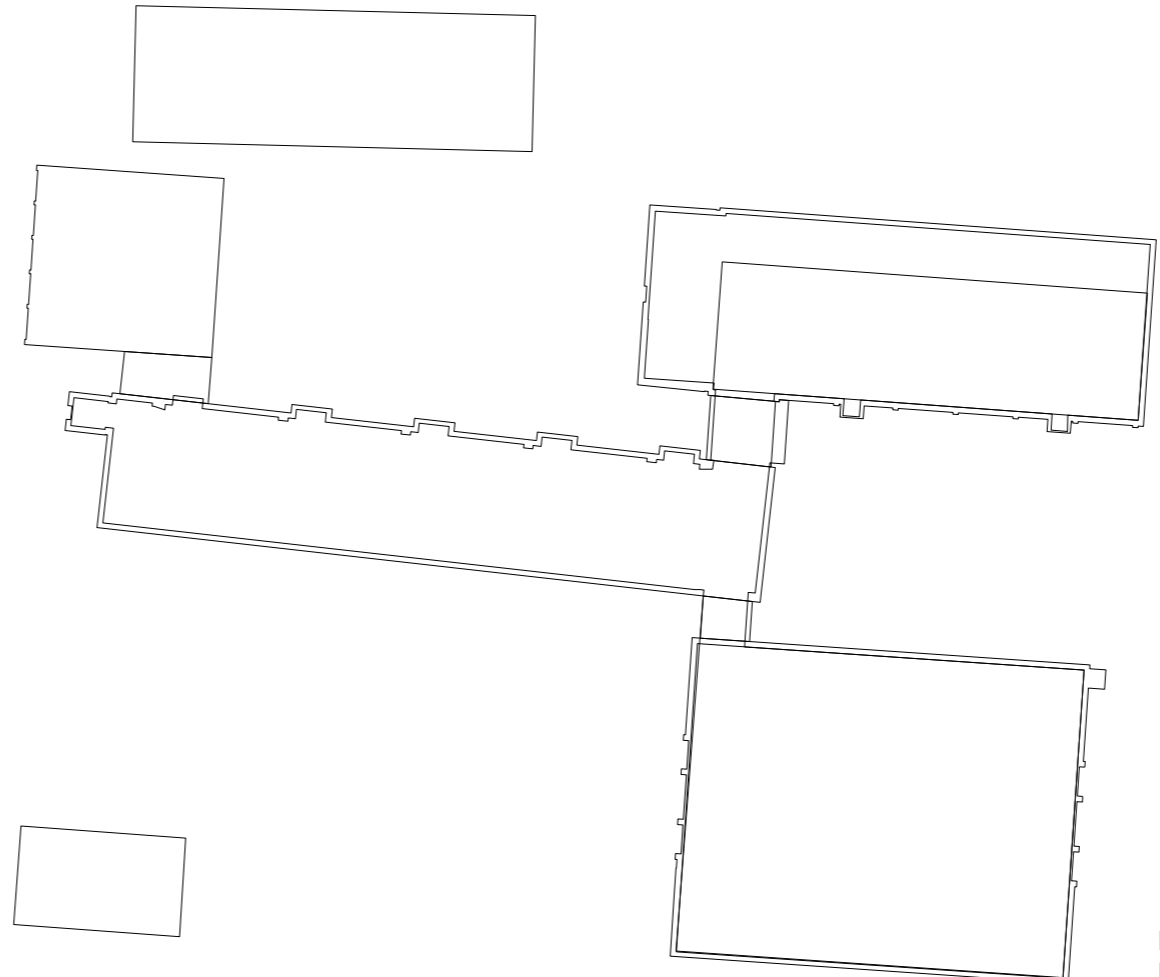
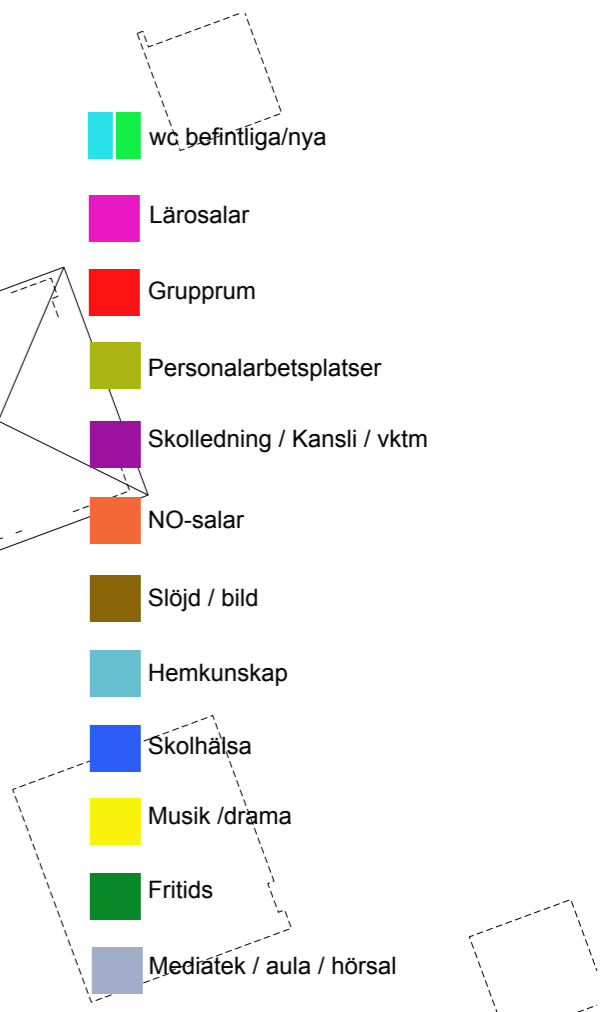
- wc befintliga/nya
- Lärosalar
- Grupprum
- Personalarbetsplatser
- Skolledning / Kansli / vktm
- NO-salar
- Slöjd / bild
- Hemkunskap
- Skolhälsa
- Musik /drama
- Fritids
- Mediatek / aula / hörsal



0 25 50 m



HUS K
PLAN 4



HUS O
PLAN 500

