

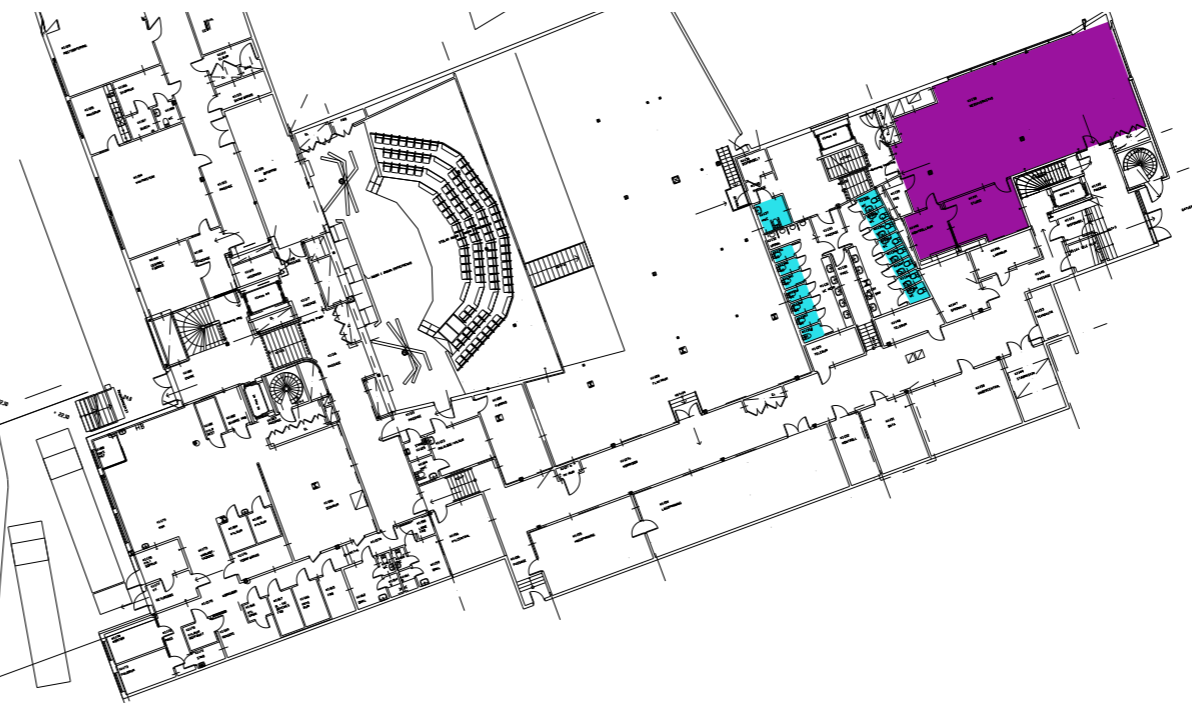


- wc befintliga/nya
- Lärosalar
- Grupprum
- Personalarbetsplatser
- Skolledning / Kansli / vktm
- NO-salar
- Slöjd / bild
- Hemkunskap
- Skolhälsa
- Musik /drama
- Fritids
- Mediatek / aula / hörsal

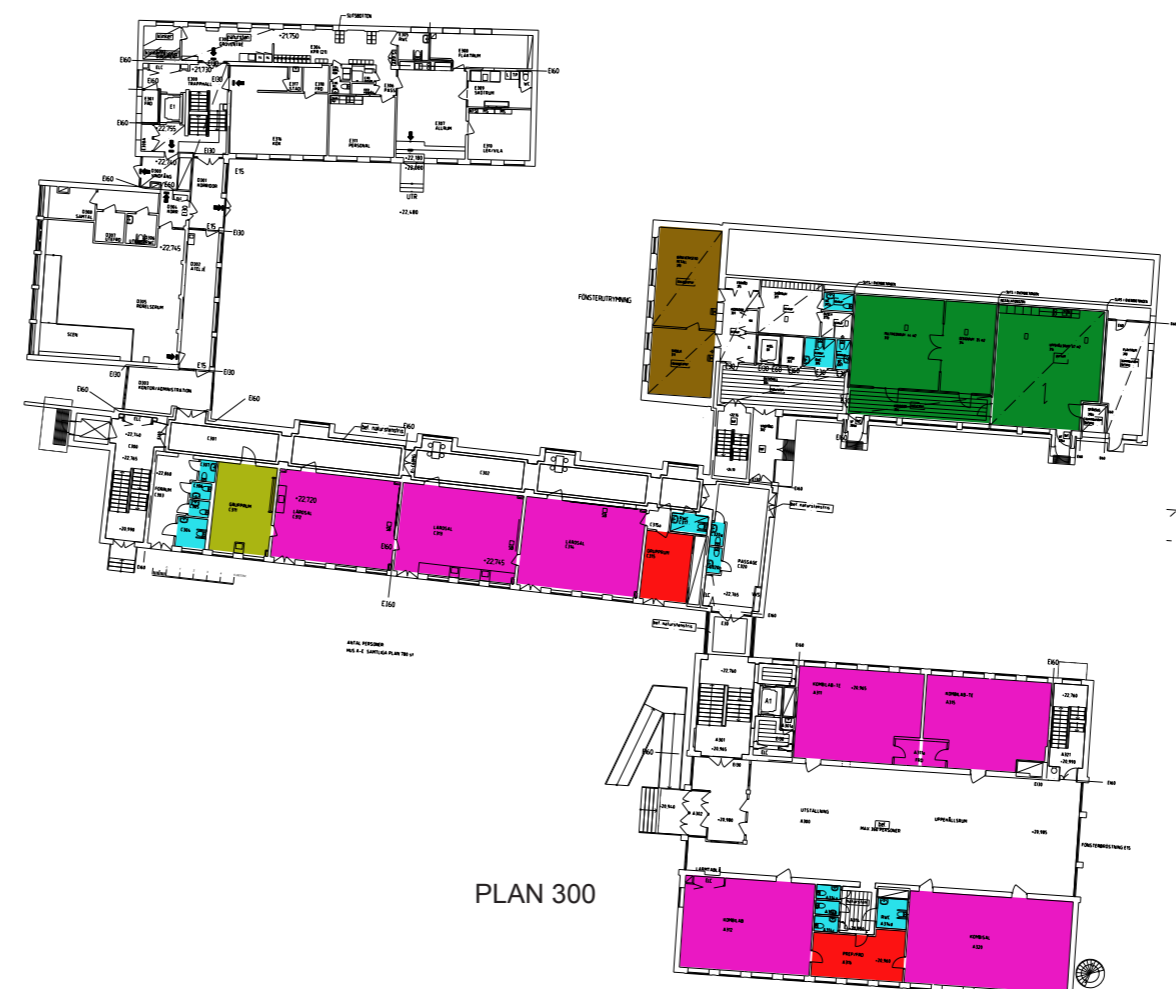
	WC Bef.	WC Nya	WC Tot	Varav HWC	LÄROSALAR	SPECIALSALAR
A	200	1	3	4	1	
	300	4		4	1	
	400		2	2	1	
	500	3		3	1	
			13	3	11	
B	300	3		3	1	Textilslöjd
	400		1	1	1	Slöjd & bild
			4	2		
C	200	2		2		Hemkunskap
	300	7		7	2	
	400	9		9	2	
			18	4	6	
O	200	11		11	2	Musik / drama
	300	6	3	9	1	Elevhälsa
	400	5	2	7	2	arkivpersonal
	500					
			27	5	21	
F	3	1		1		3
	4	4		4	1	2
			5	1		5
G	3					4
	4					4
						8
Z	2	8		8		
	3	3	4	7	1	5
	4	13		13	2	4
			28	3		9
K	1	16		16	1	
	2	6		6	1	
	3	12		12	2	3 NO-salar
	4	8		8	2	3 NO-salar
			42	6	8	
tot			137	24	68	



PLAN 3



PLAN 1



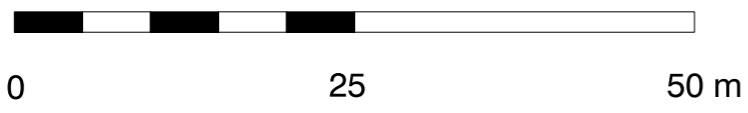
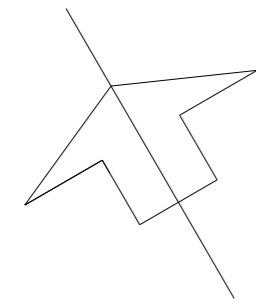
PLAN 300

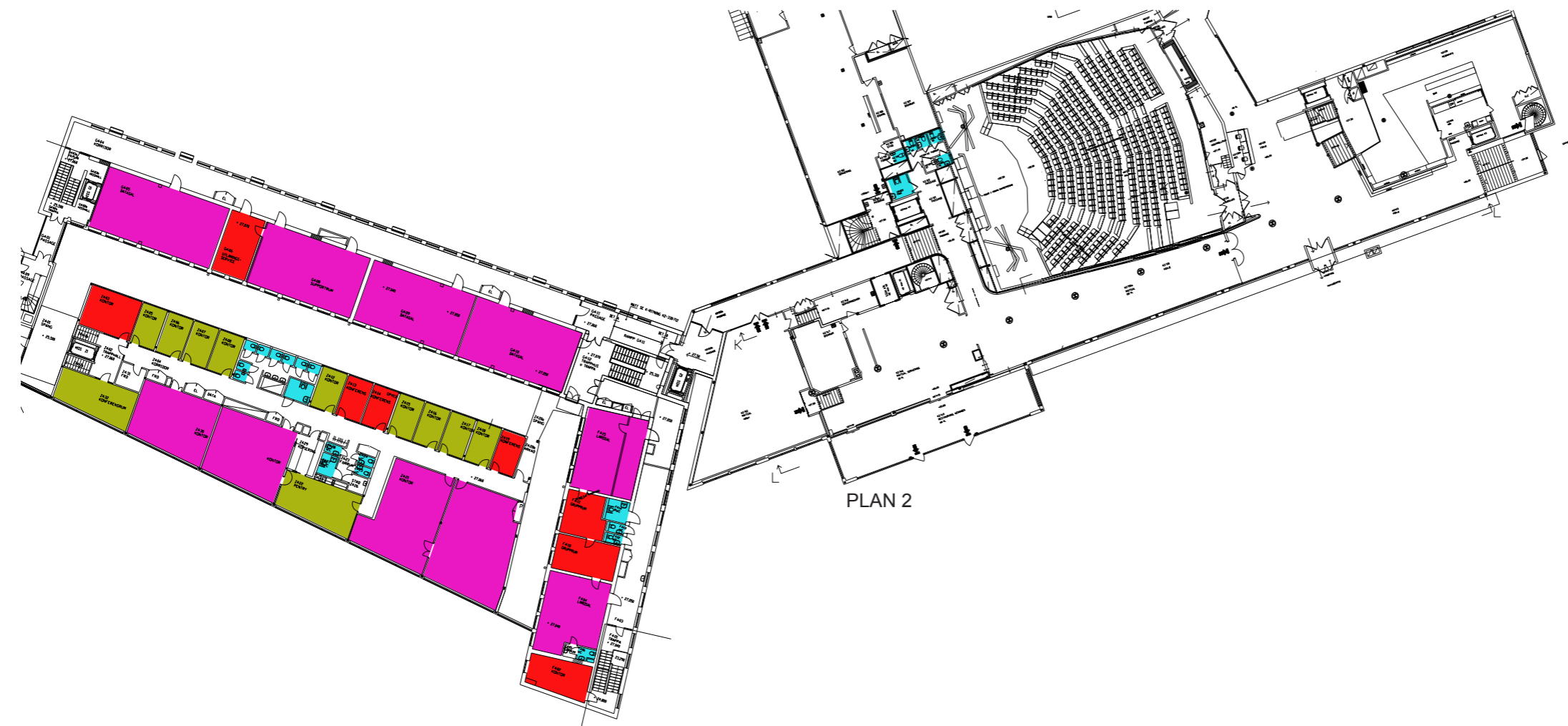


PLAN 200

- wc befintliga/nya
- Lärosalar
- Grupprum
- Personalarbetsplatser
- Skolledning / Kansli / vktm
- NO-salar
- Slöjd / bild
- Hemkunskap
- Skolhälsa
- Musik /drama
- Fritids
- Mediatek / aula / hörsal

FÖRKLARING





PLAN 2



PLAN 4

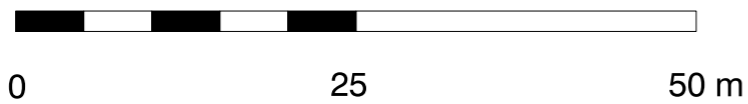
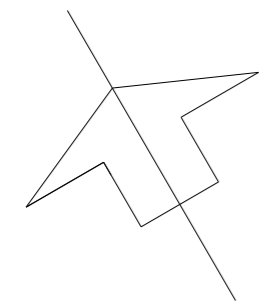


PLAN 400



PLAN 300

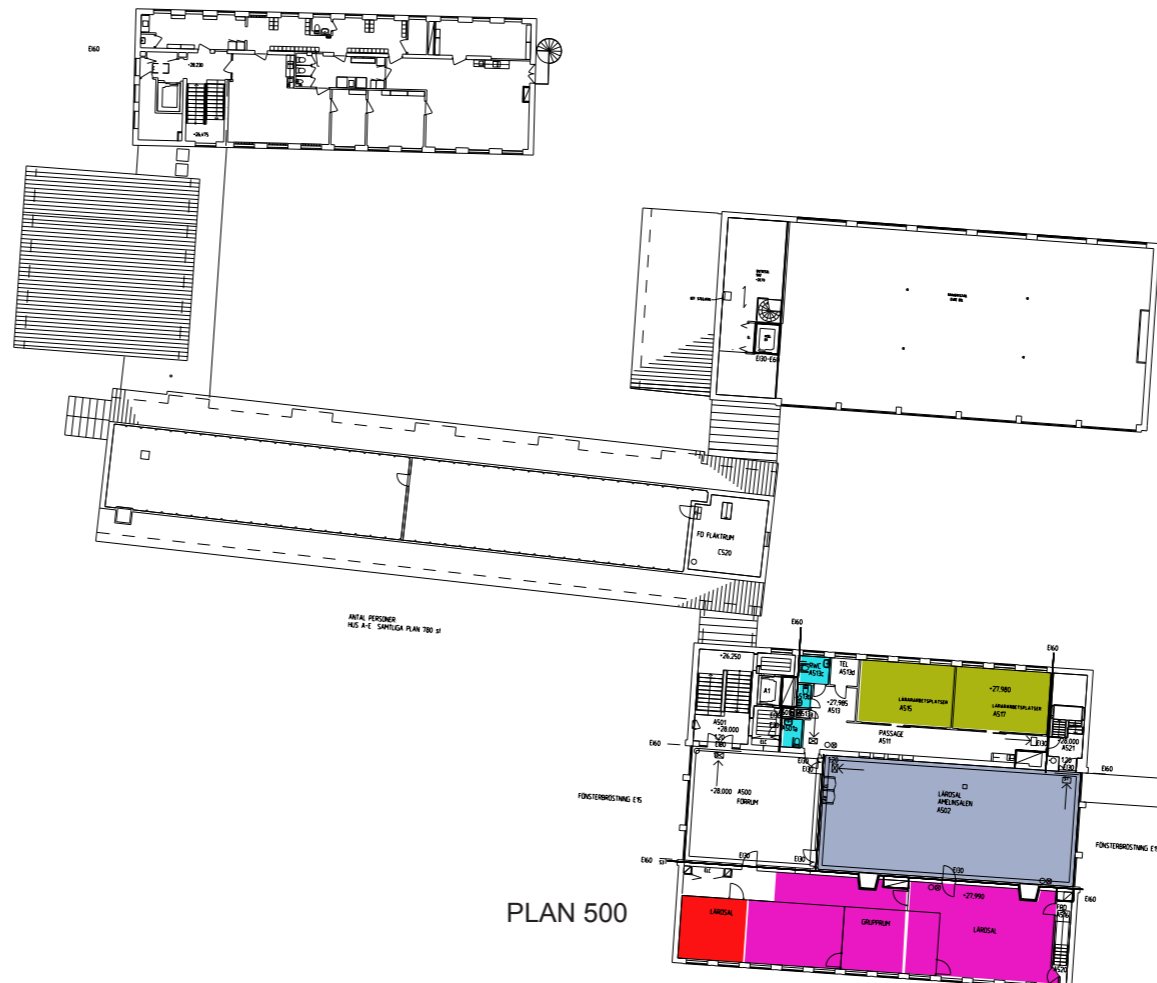
- wc befintliga/nya
- Lärosalar
- Grupprum
- Personalarbetsplatser
- Skolledning / Kansli / vktm
- NO-salar
- Slöjd / bild
- Hemkunskap
- Skolhälsa
- Musik /drama
- Fritids
- Mediatek / aula / hörsal



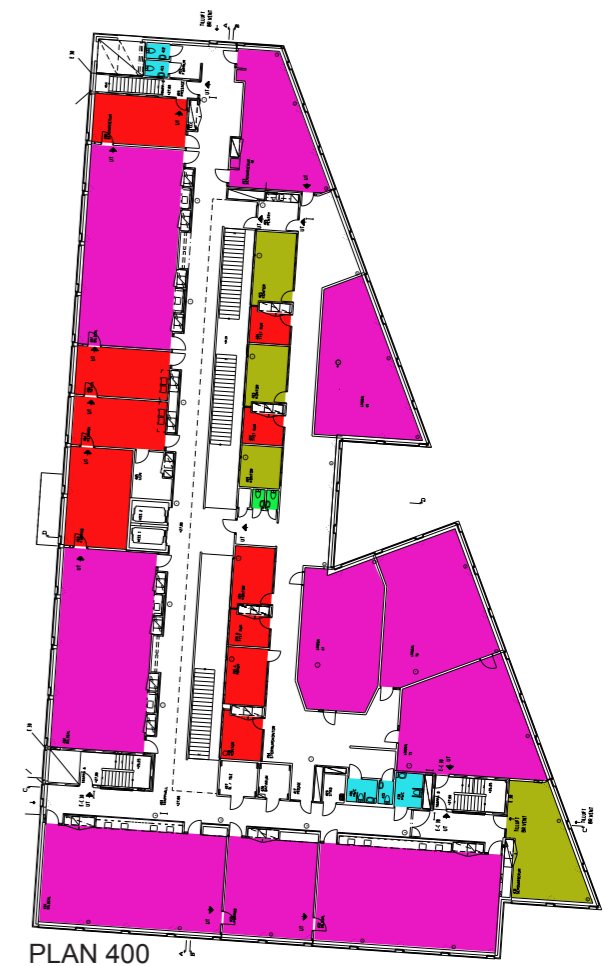


PLAN 3

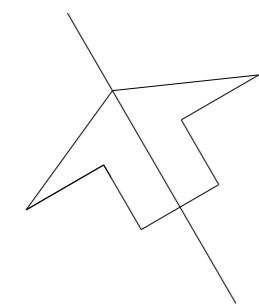
- wc befintliga/nya
- Lärosalar
- Grupprum
- Personalarbetsplatser
- Skolledning / Kansli / vktm
- NO-salar
- Slöjd / bild
- Hemkunskap
- Skolhälsa
- Musik /drama
- Fritids
- Mediatek / aula / hörsal



PLAN 500



PLAN 400



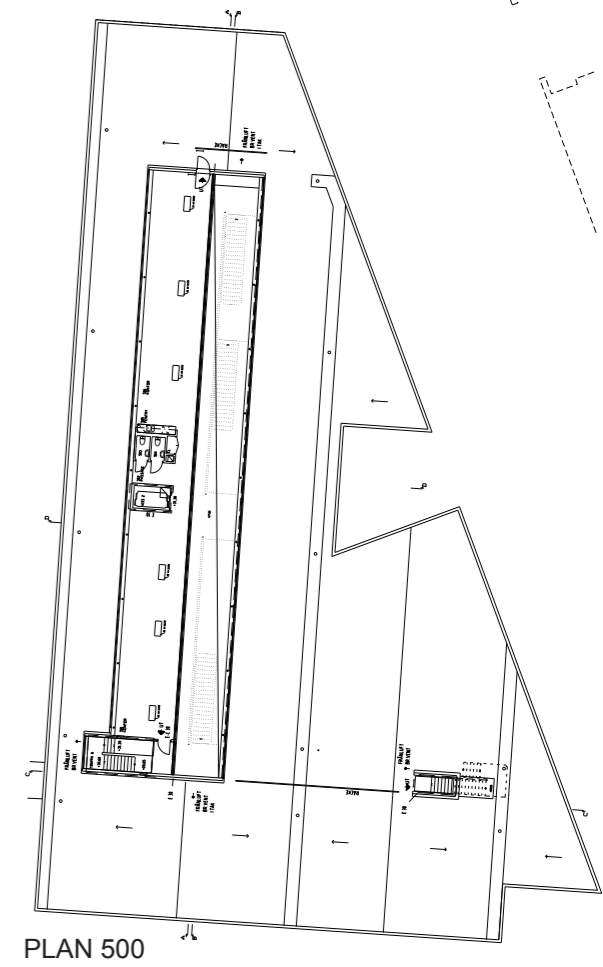
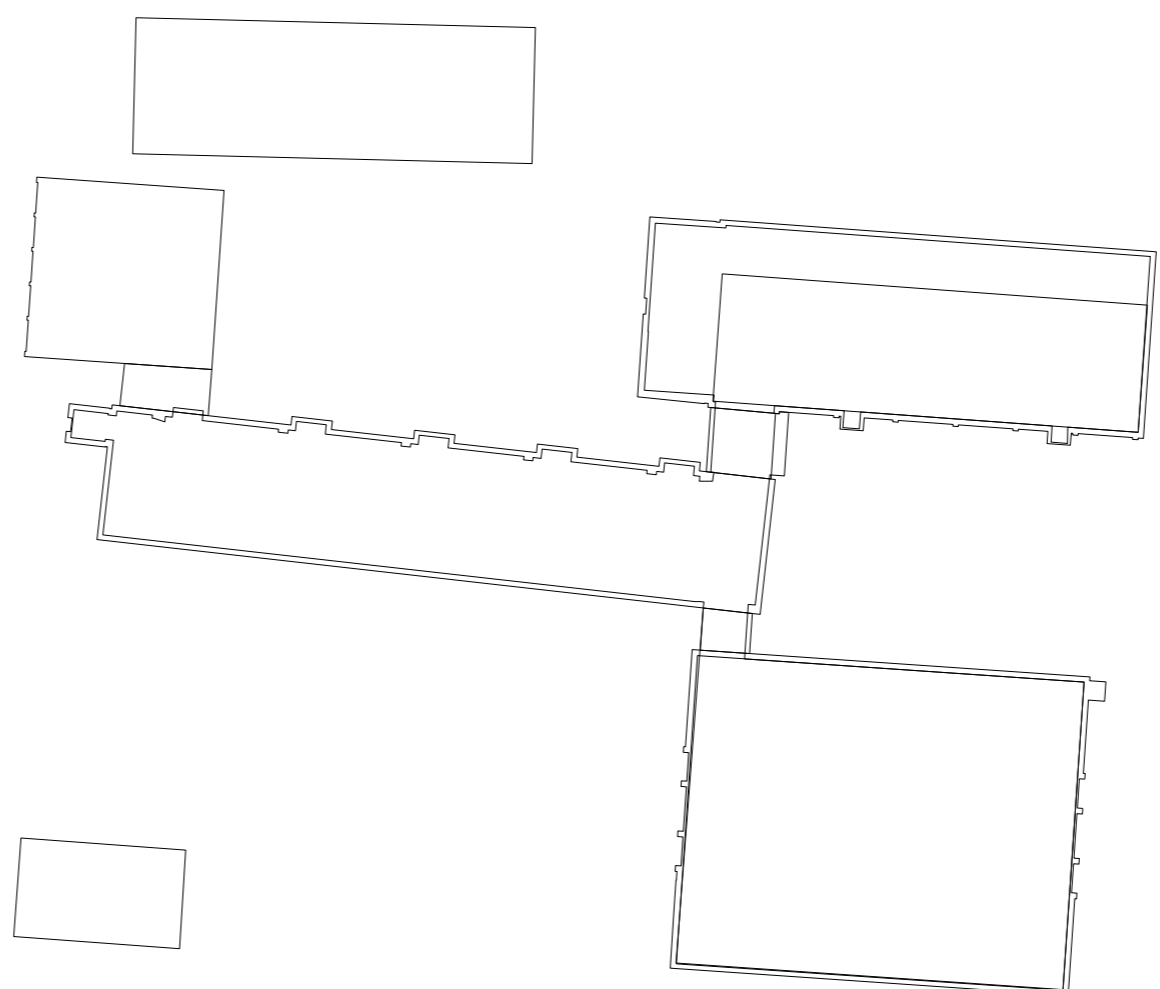
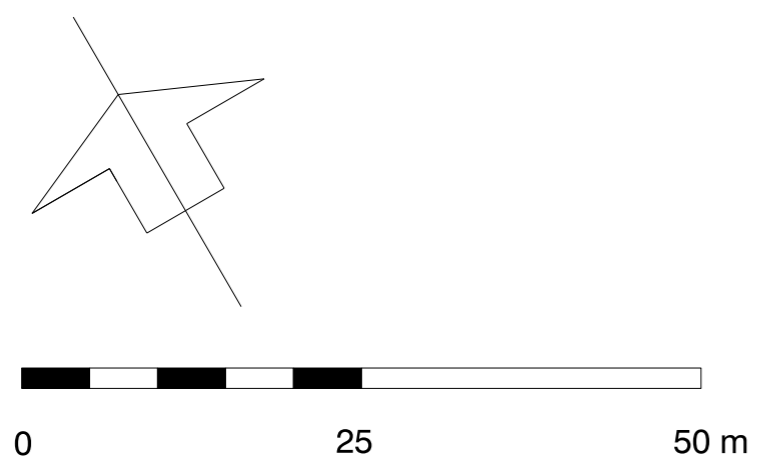
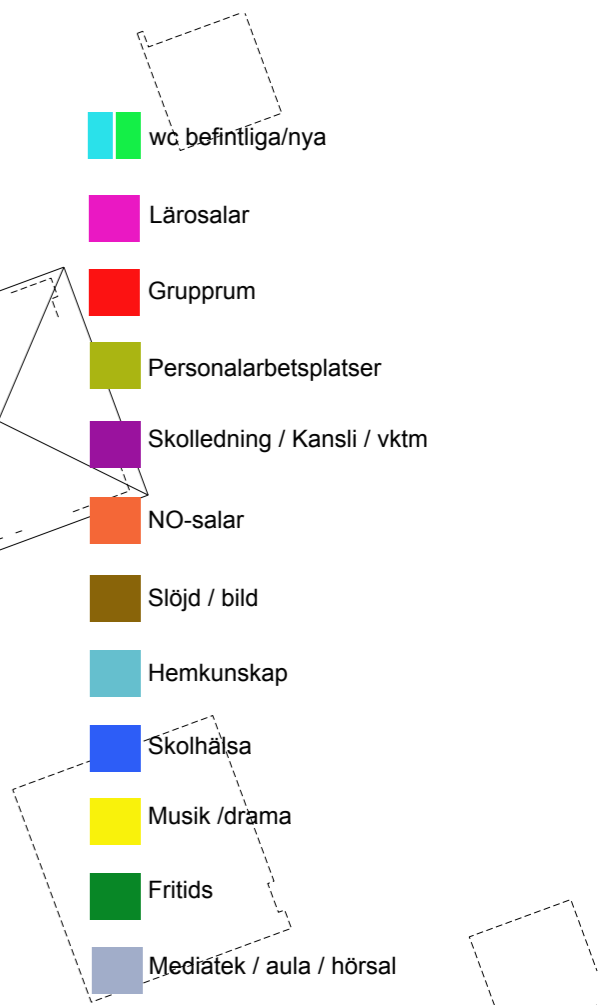
0

25

50 m



PLAN 4



PLAN 500