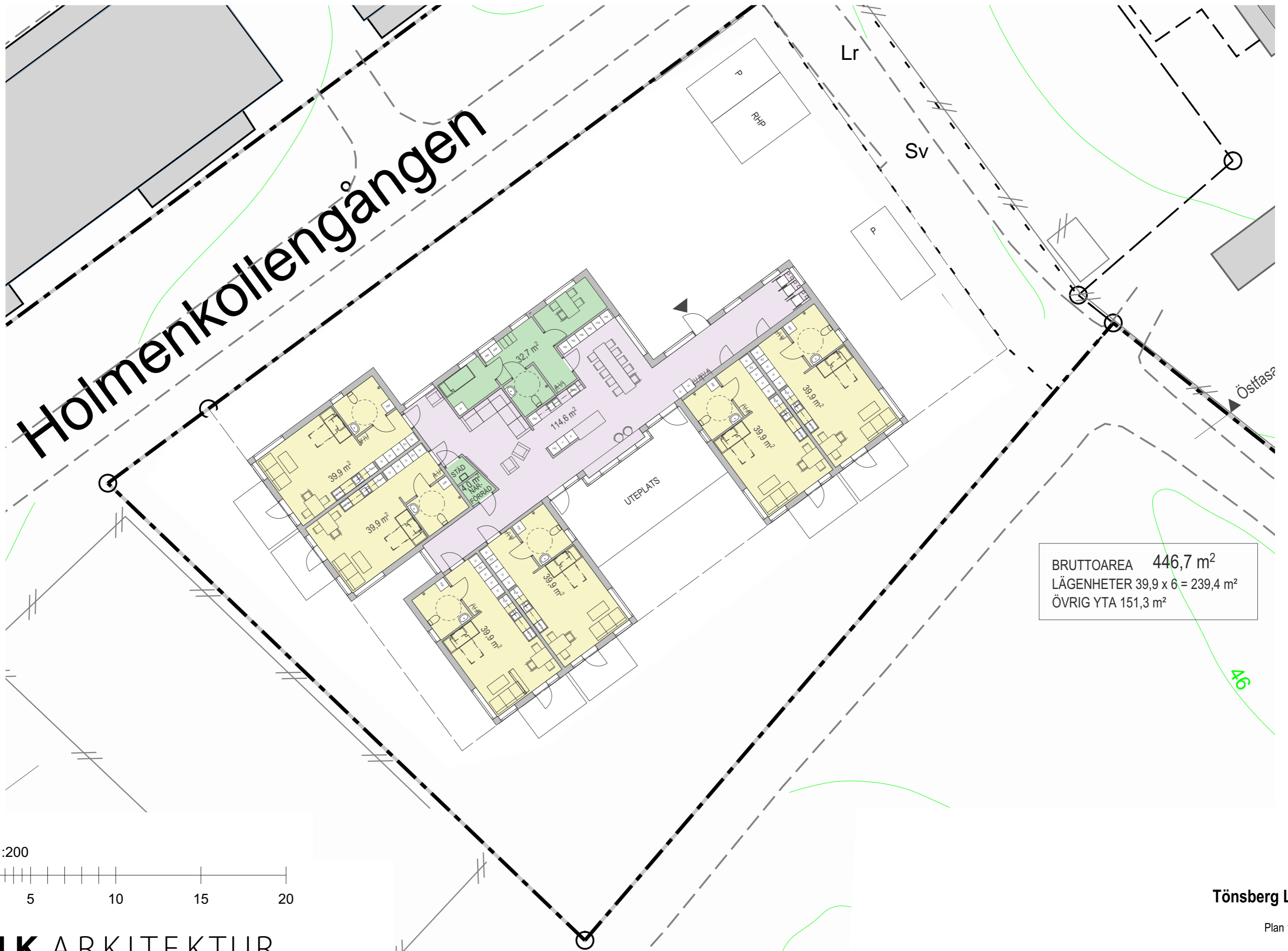
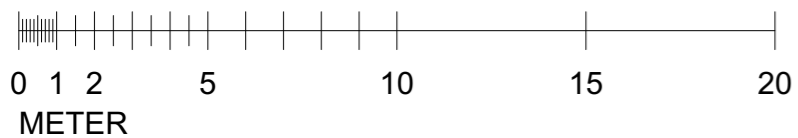


Holmenkollengången



BRUTTOAREA 446,7 m²
LÄGENHETER 39,9 x 6 = 239,4 m²
ÖVRIG YTA 151,3 m²

SKALA 1:200

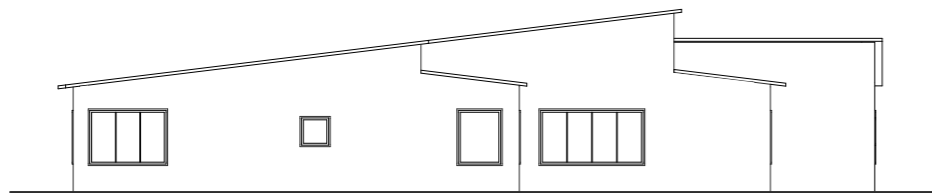


LINK ARKITEKTUR

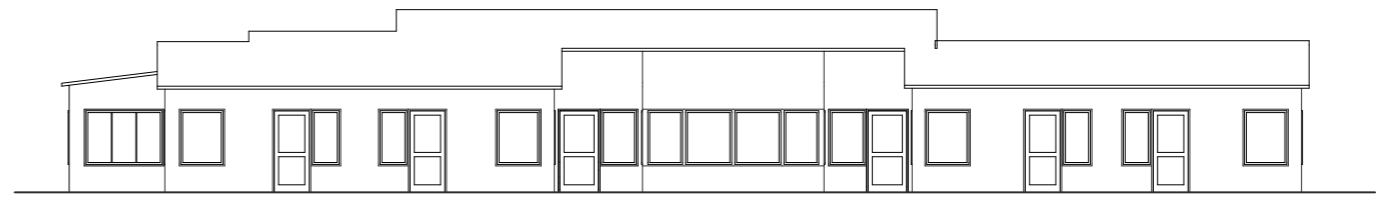
Tönsberg LSS

Skiss
Plan 1:200

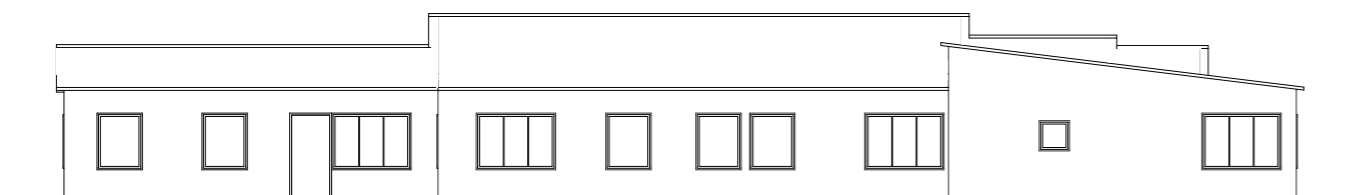
2019-02-07



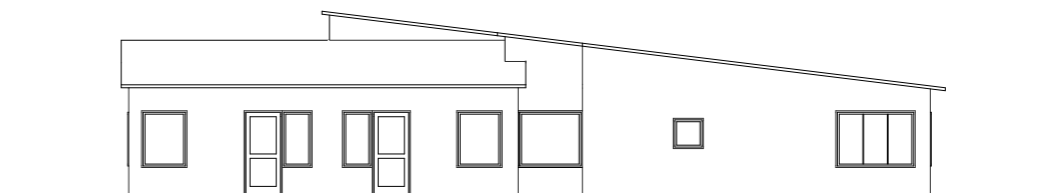
FASAD NORDOST



FASAD SYDOST

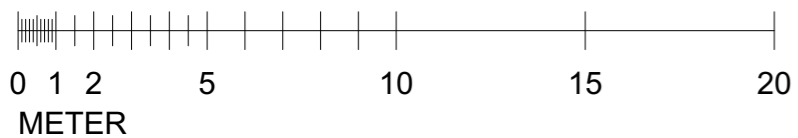


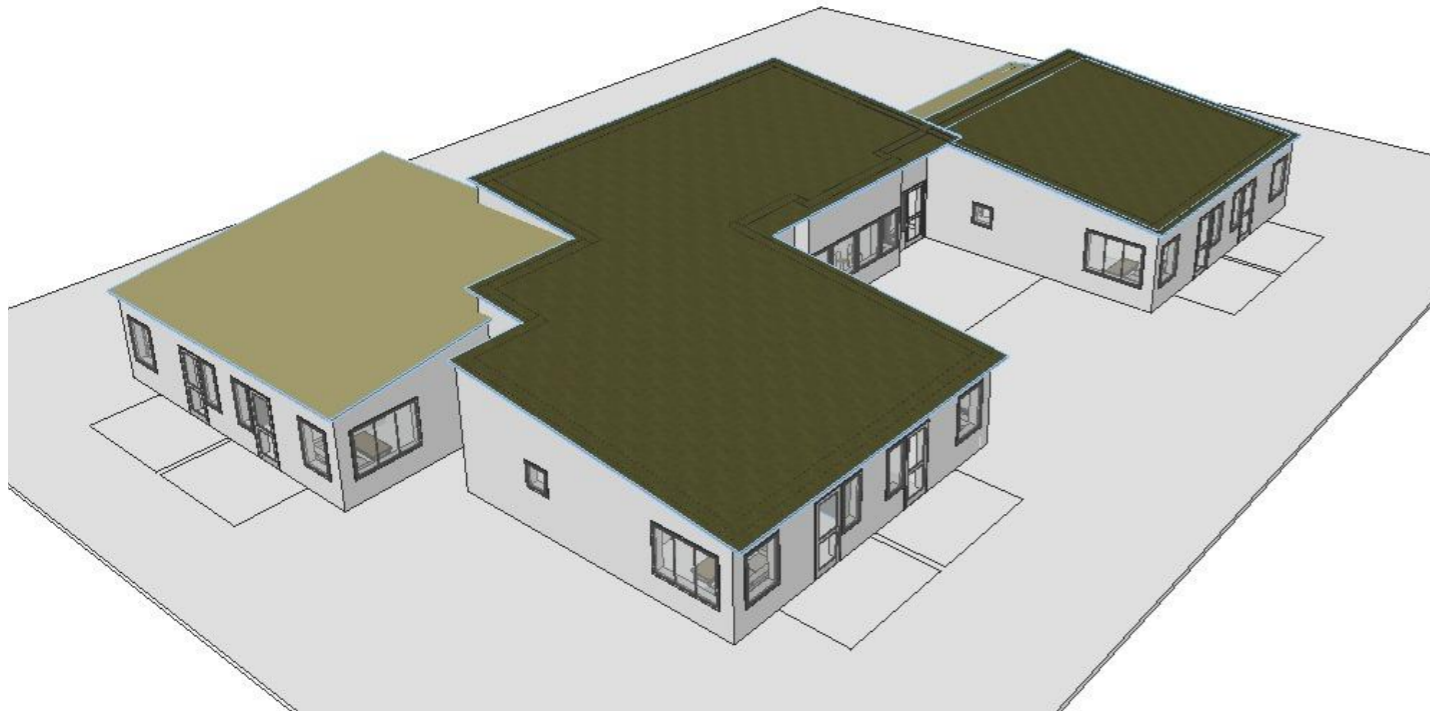
FASAD NORDVÄST



FASAD SYDVÄST

SKALA 1:200

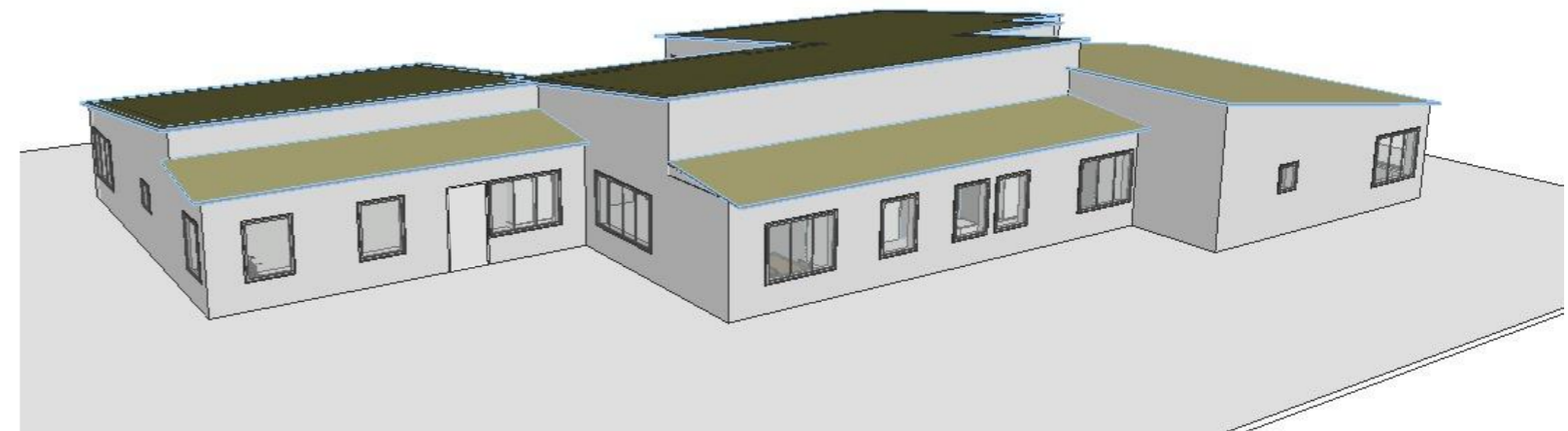




VY FRÅN SÖDER

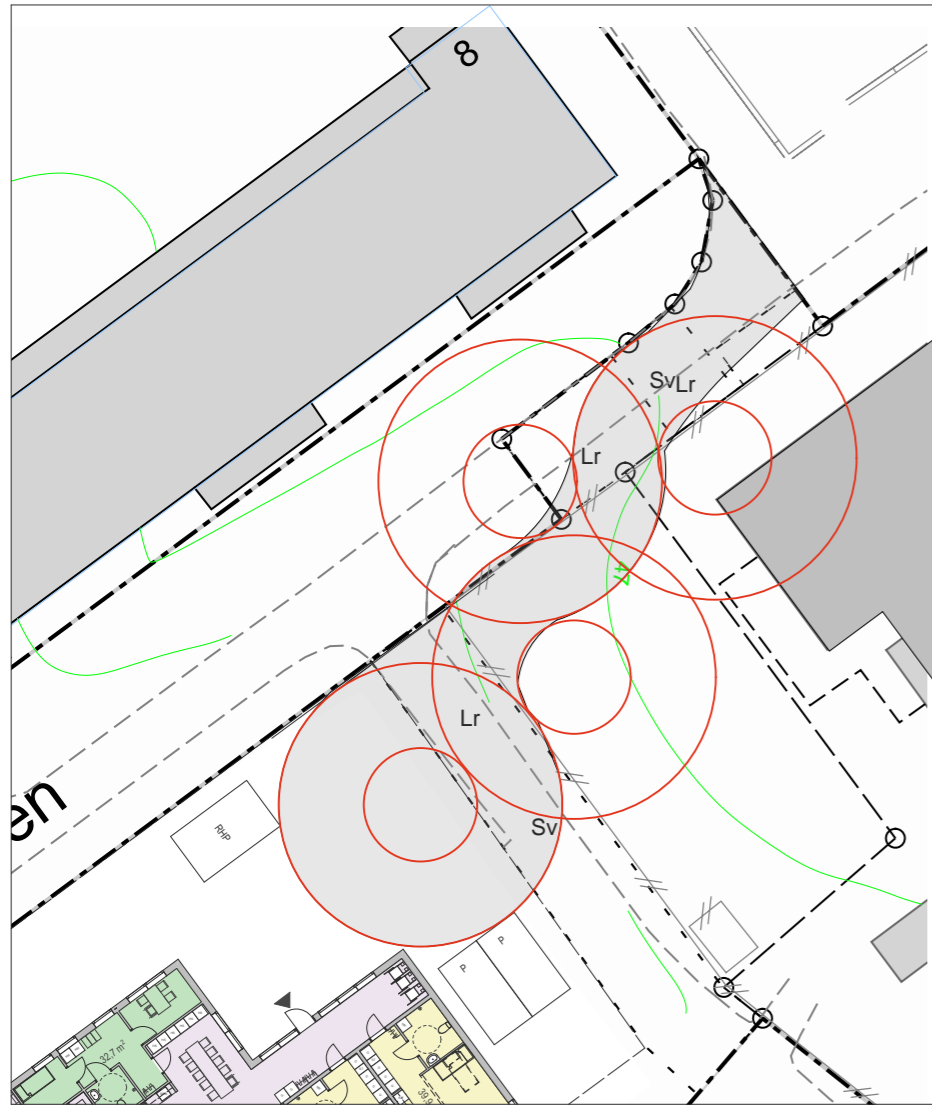


VY FRÅN ÖST

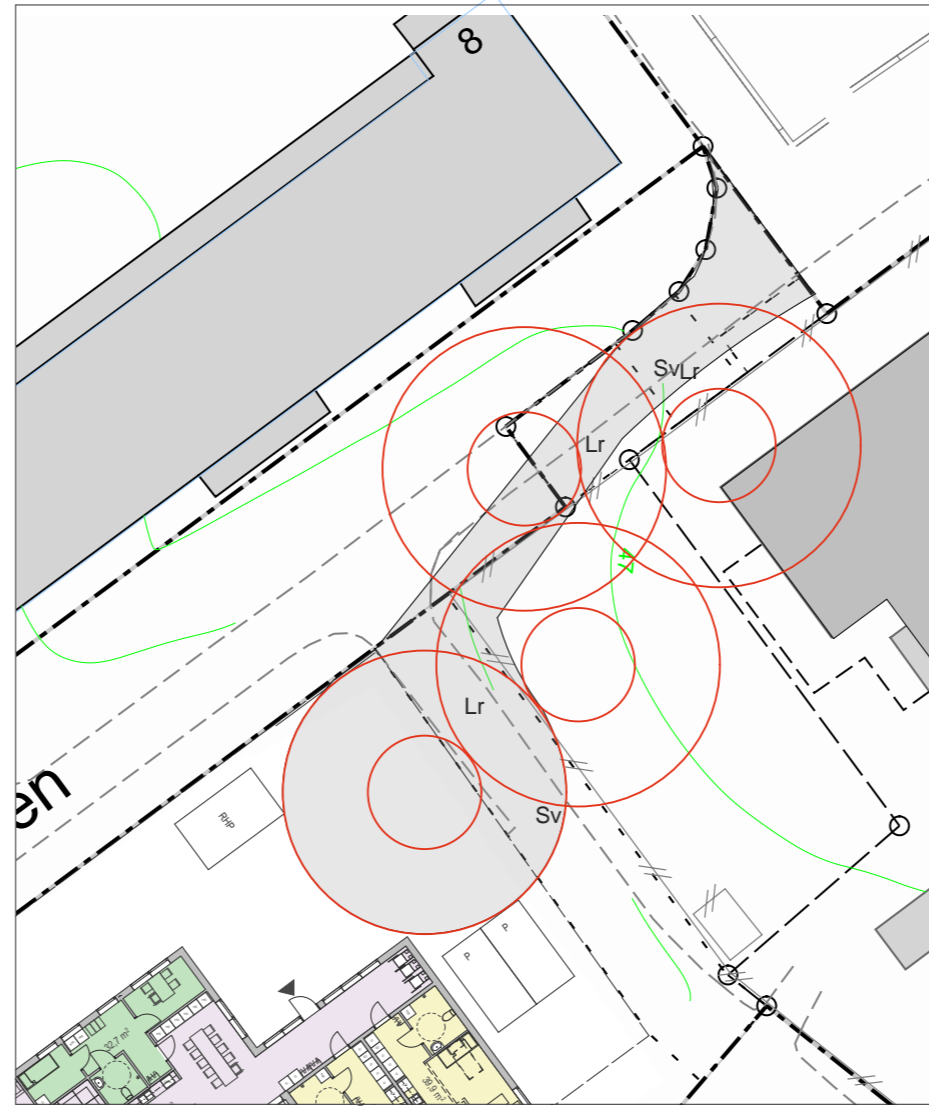


VY MOT ENTRÉ

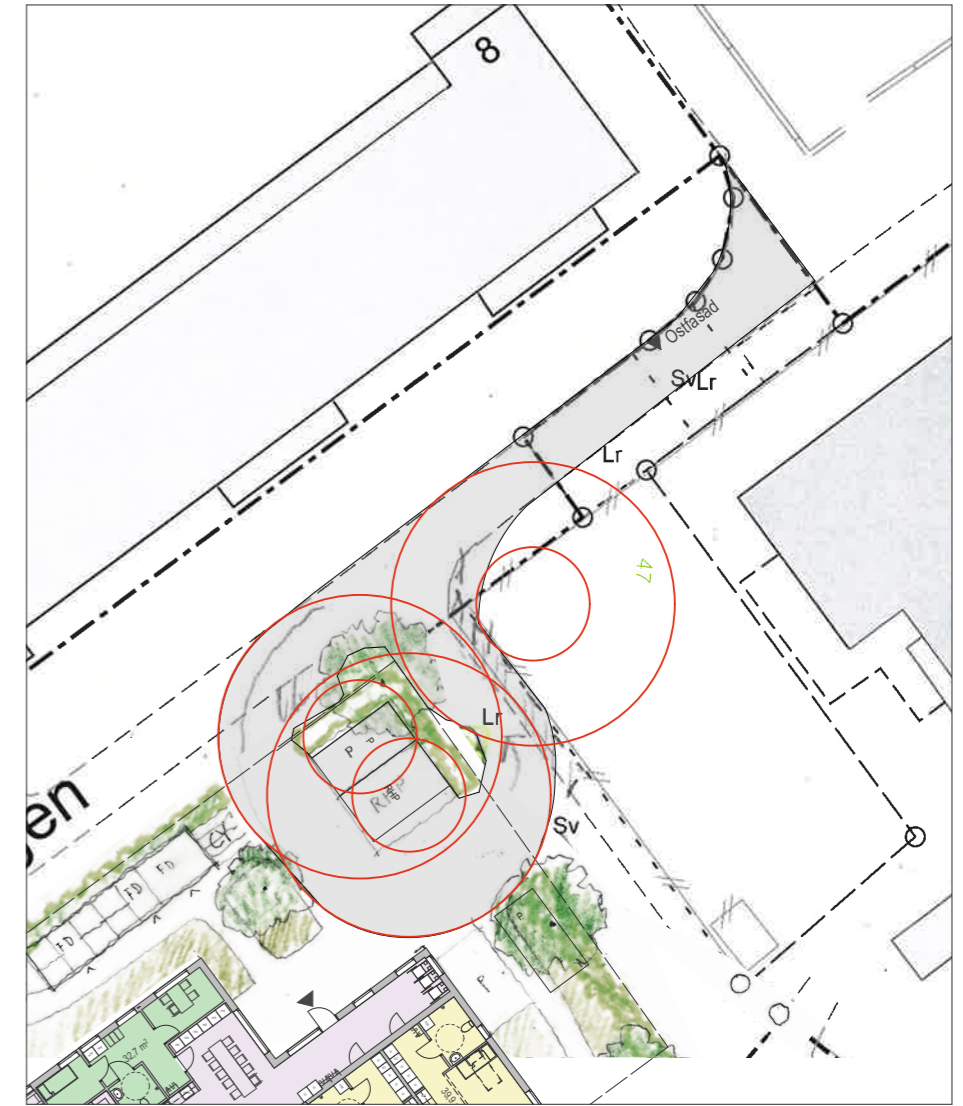
ANGÖRING: ILLUSTRERAD FÖR SVÄNGRADIE MINIBUSS/FÄRDTJÄNST



ALTERNATIV A



ALTERNATIV B



ALTERNATIV C